



# Zimbabwe Herd Book Update

Presentation to the Zimbabwe Herd Book  
Beef School 2018

# Registrations - 2018

- 3 new goat studs and 13 beef studs were registered
- Total sheep, goat, dairy and beef studs registered increased to 134
- Number of registered breeding animals also increased by 5%

# ZHB 2018 Registrations

	<b>Breeders</b>	<b>Stock</b>
Dorper	2	329
Boer	4	67
Kalahari Red	3	59
<b>Goat breeds</b>	<b>7</b>	<b>126</b>
Ayrshire	1	4
Holstein	1	50
<b>Dairy breeds</b>	<b>2</b>	<b>54</b>

# ZHB 2018 Registrations

	Breeders	Stock
Beefmaster	5	789
Blonde d'Aquitaine	1	7
Bonsmara	1	81
<b>Boran</b>	<b>19</b>	<b>2,807</b>
<b>Brahman</b>	<b>57</b>	<b>5,042</b>
Charbray	1	37
D/Master	1	166
Limousin	4	122
Mashona	3	364
Nguni	2	131
Santa Gertrudis	3	271
Simbra	4	128
Simmental	6	465
Sussex	1	14
<b>Tuli</b>	<b>15</b>	<b>2,200</b>
<b>Beef breeds</b>	<b>123</b>	<b>12,624</b>

# Breed Societies

- Seven active breed Societies

- Dorper

- Goats

- Boran

- Brahman

- Mashona

- Simbrah & Simmental

- Tuli

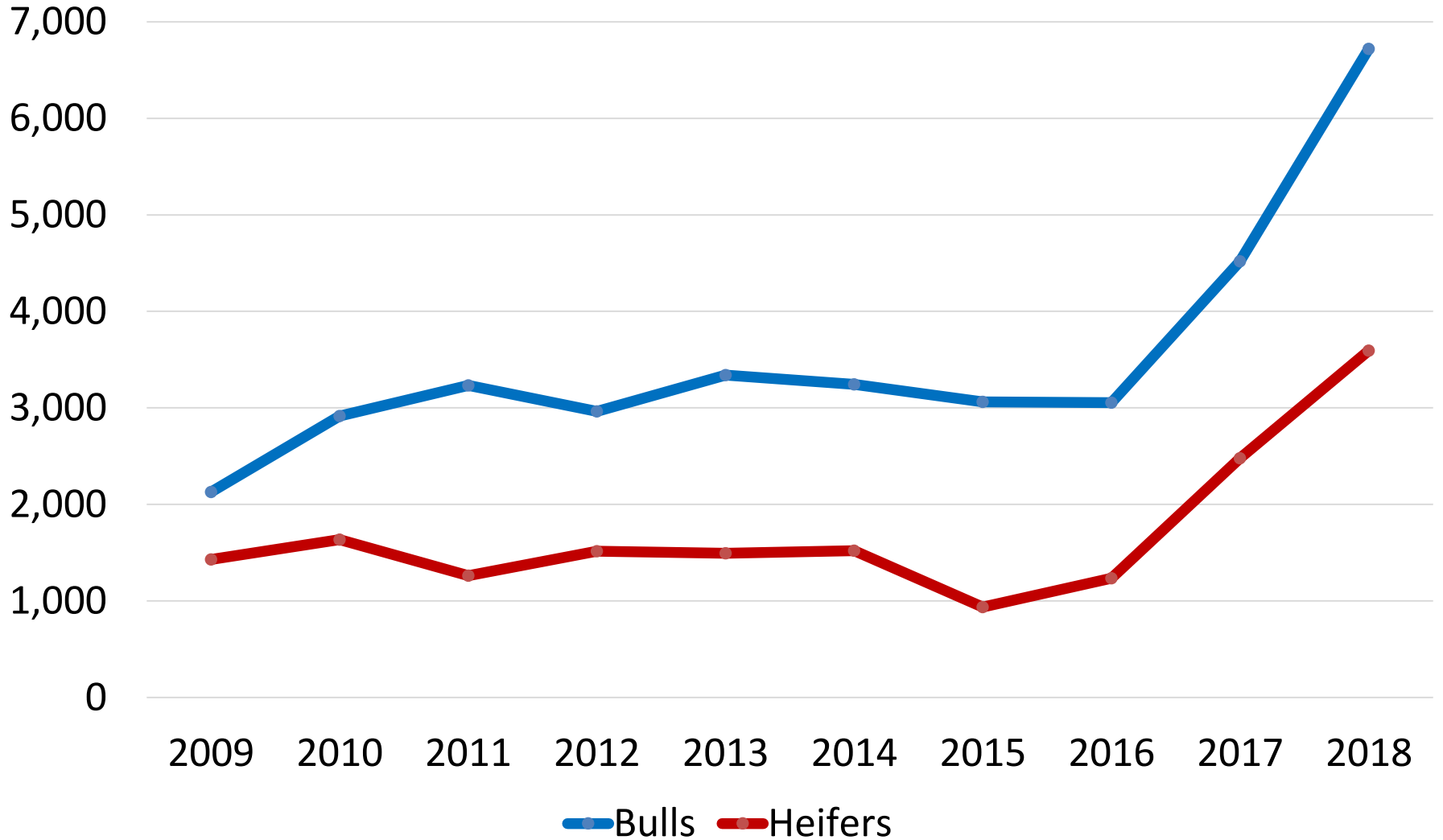
Resuscitation of the Angus and Brangus Breed Society is in progress

# BreedPlan® and Genetic Evaluations

- BreedPlan® implemented in 2010
  - a world's leading performance recording and evaluation system
- Tuli Cattle Society has used this service: breed runs now being carried out on a quarterly basis

# National Sale

ZHB National Sale - Average Prices, 2009 to 2018





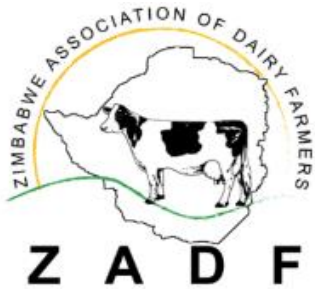
# **LMAC and Allied Associations** **Update**

Presentation to the Zimbabwe Herd Book  
Beef School 2018



# Who is LMAC?

- Formed in 1994 as a platform for livestock private sector players to dialogue with Government on the state of the industry following privatisation of agricultural marketing under ESAP
- Since developed into an apex body of various livestock related Associations
- Facilitates interaction between private and public sector agencies about livestock issues



# Functions of LMAC

- Organise regular meetings of its allied Associations;
- Organise public-private sector dialogue meetings where chairpersons of allied Associations meet representatives of the public sector as well as those of Farmers Unions, CZI and Bankers

# Functions

- Gather and analyse industry data for dissemination to its members and the public sector
- Draft policy position papers for engaging the public sector (e.g. Mid-Term Fiscal Policy Review; National Budget discussions)
- Organise events: PPAZ, SMA, ZFPA and ZPA

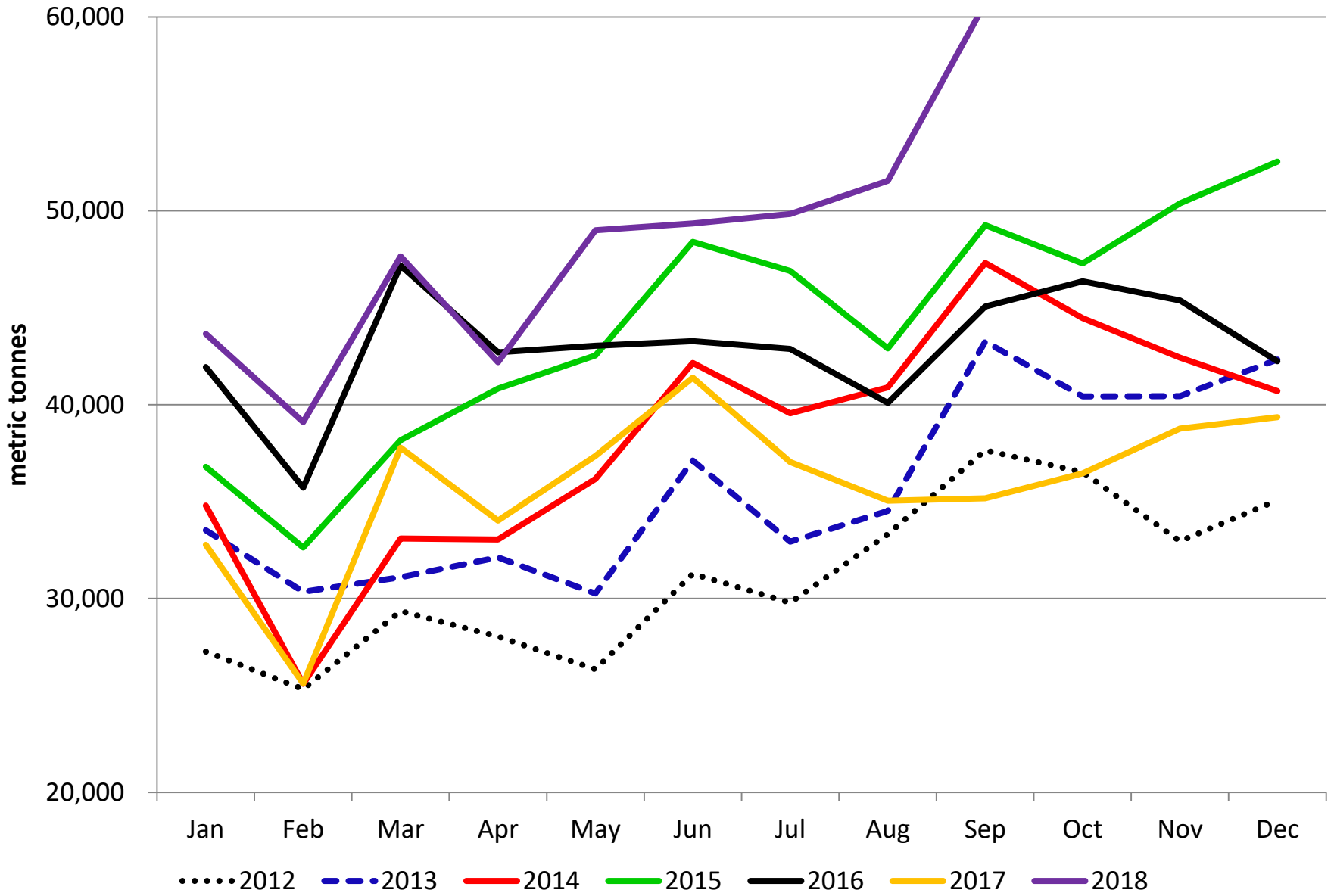
# Reporting & Advocacy

- Aggregate and analyse data (tables, graphs, trends)
- Prepare and circulate reports
- Evidence-based advocacy

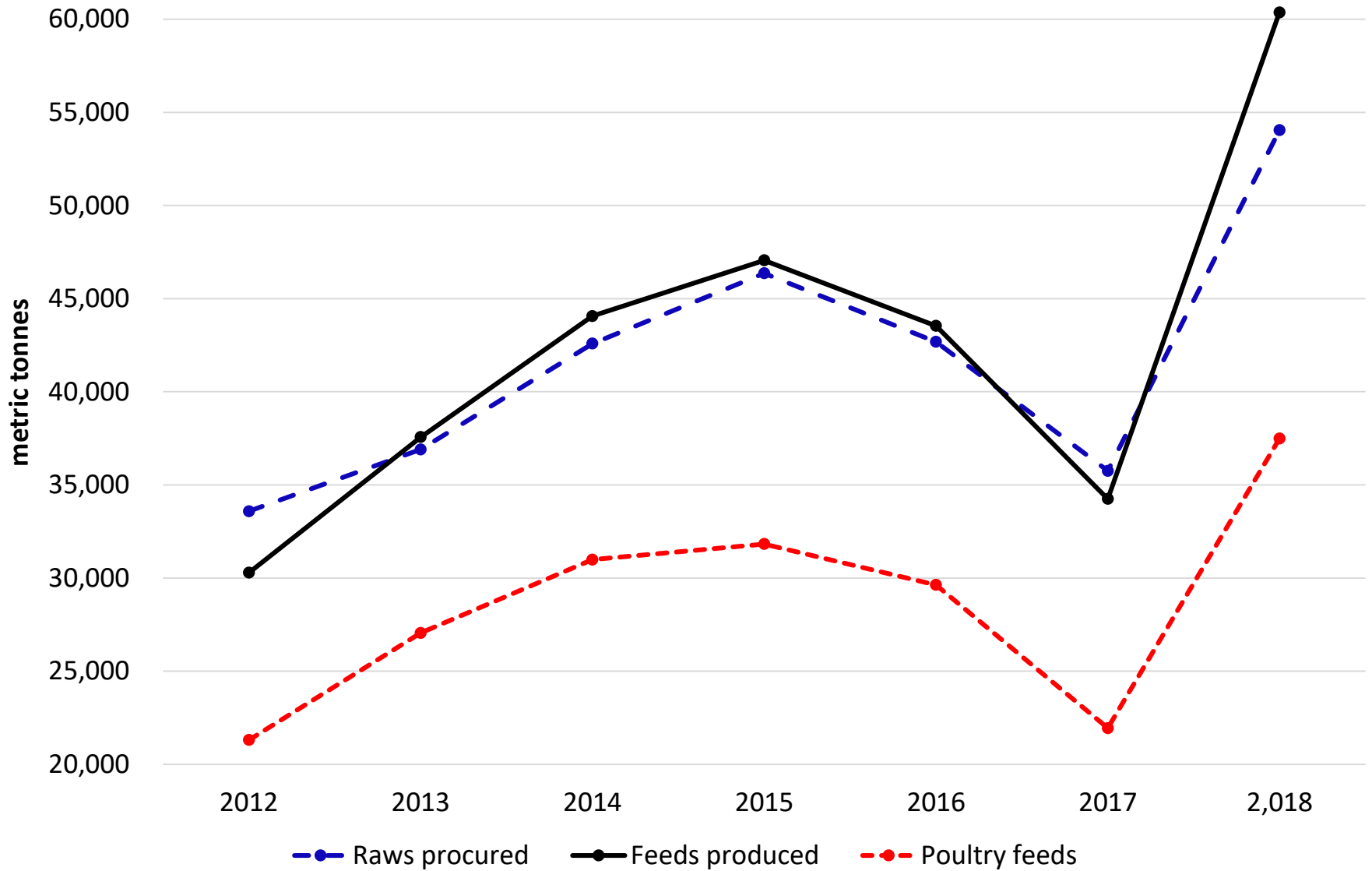
# Livestock Sector Overview

- Stockfeeds
- Poultry
- Beef
- Pigs
- Fish
- Meat Processors
- Budget 2019

# Raws Procured

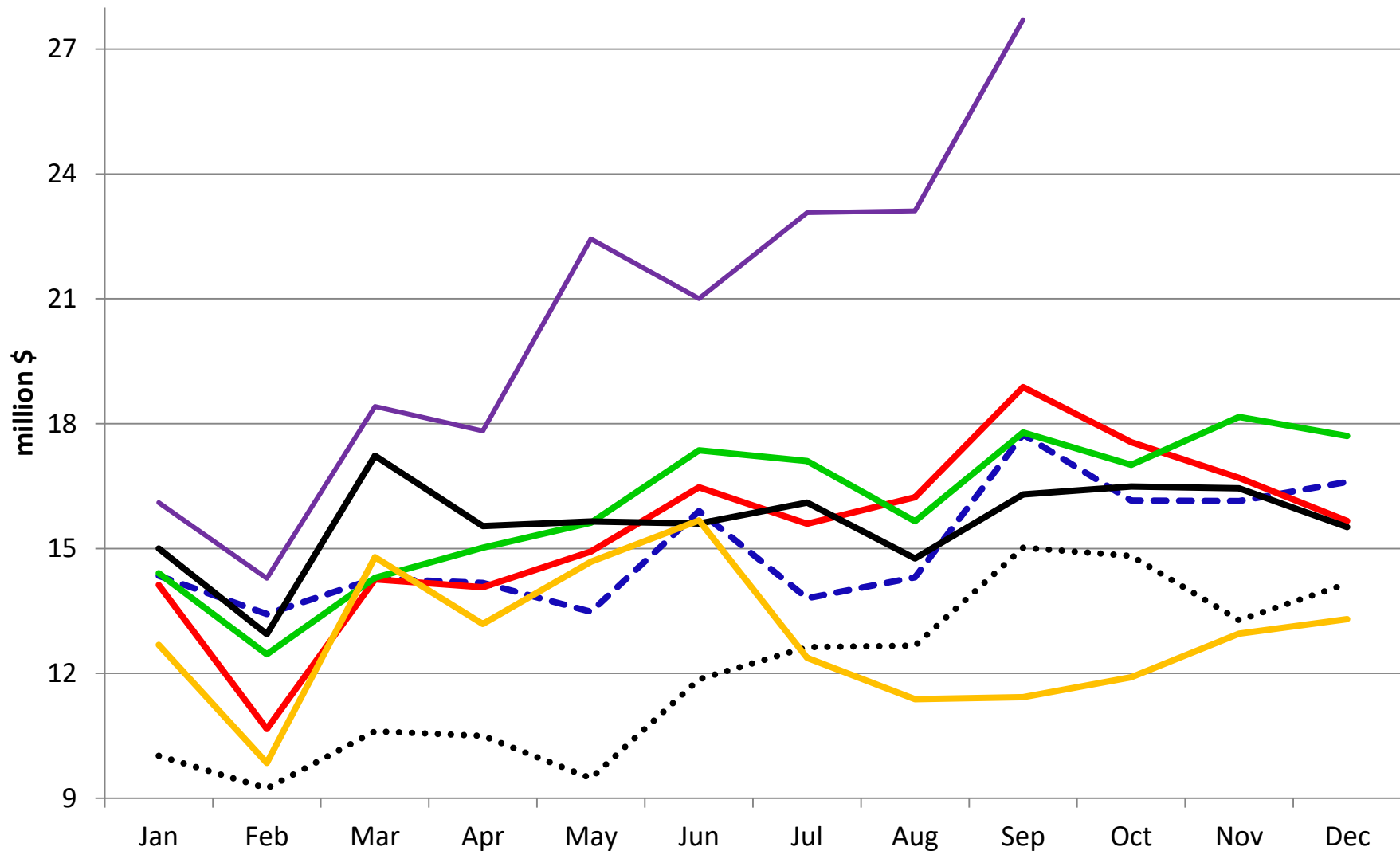


## Third Quarter Monthly Average Tonnages of Raws Procured and Feeds Produced



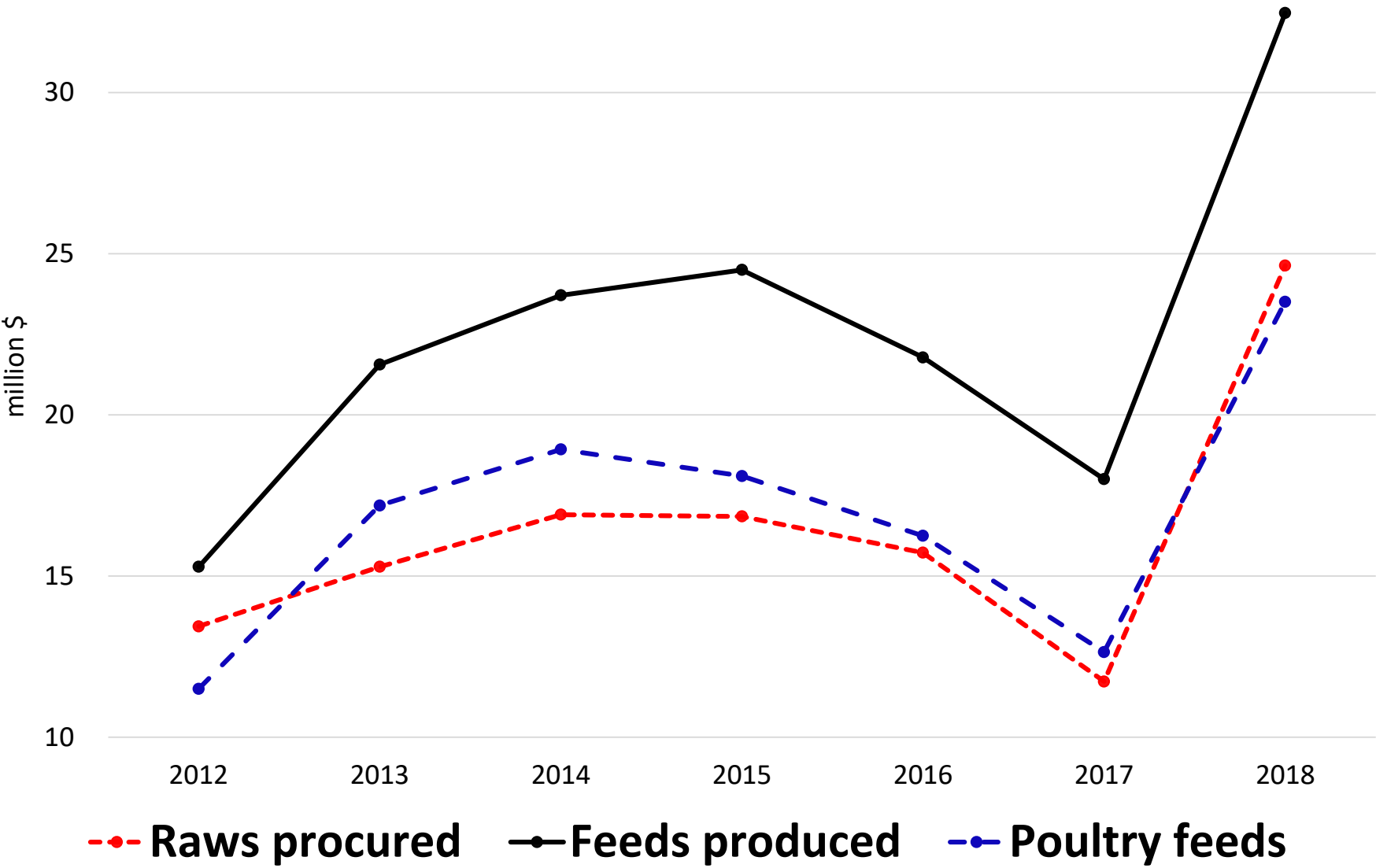


# Monetary Value of Raws Procured

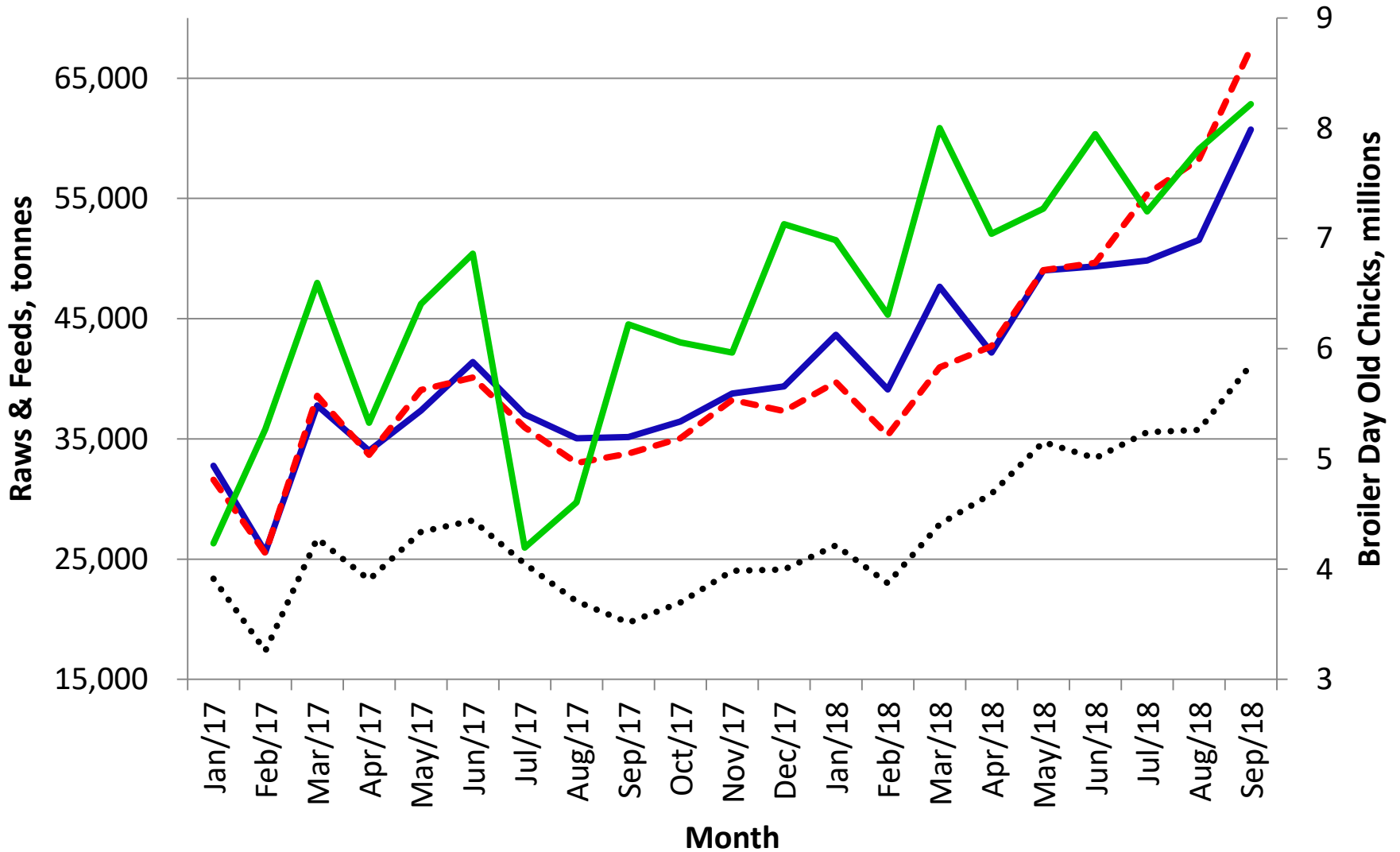


.....2012    - - - - 2013    ——— 2014    ——— 2015    ——— 2016    ——— 2017    ——— 2018

# Third Quarter Monthly Average Values of Raws Procured and Feeds Produced

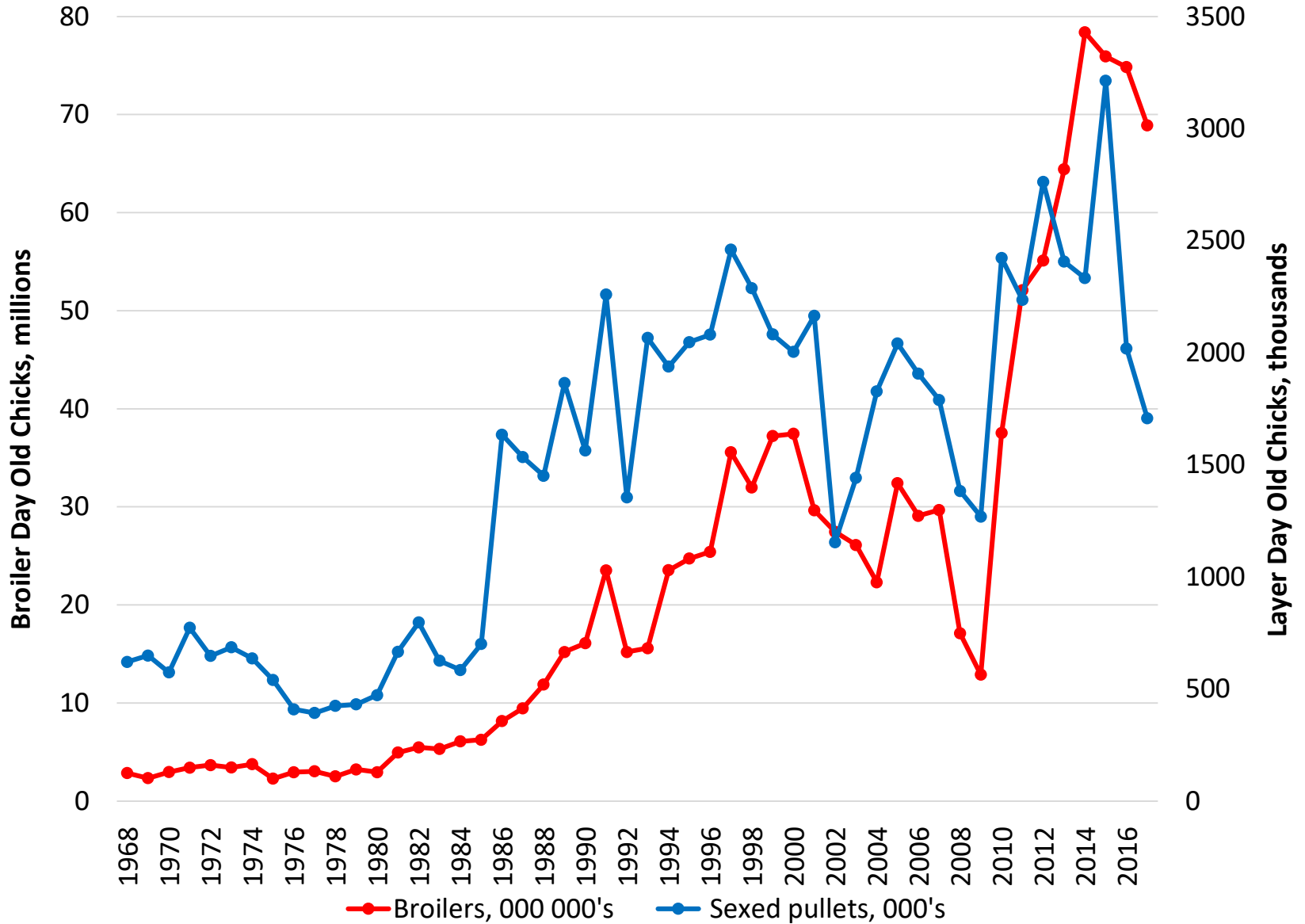


# Raws Procured, Feeds and Broiler Day Old Chicks Produced

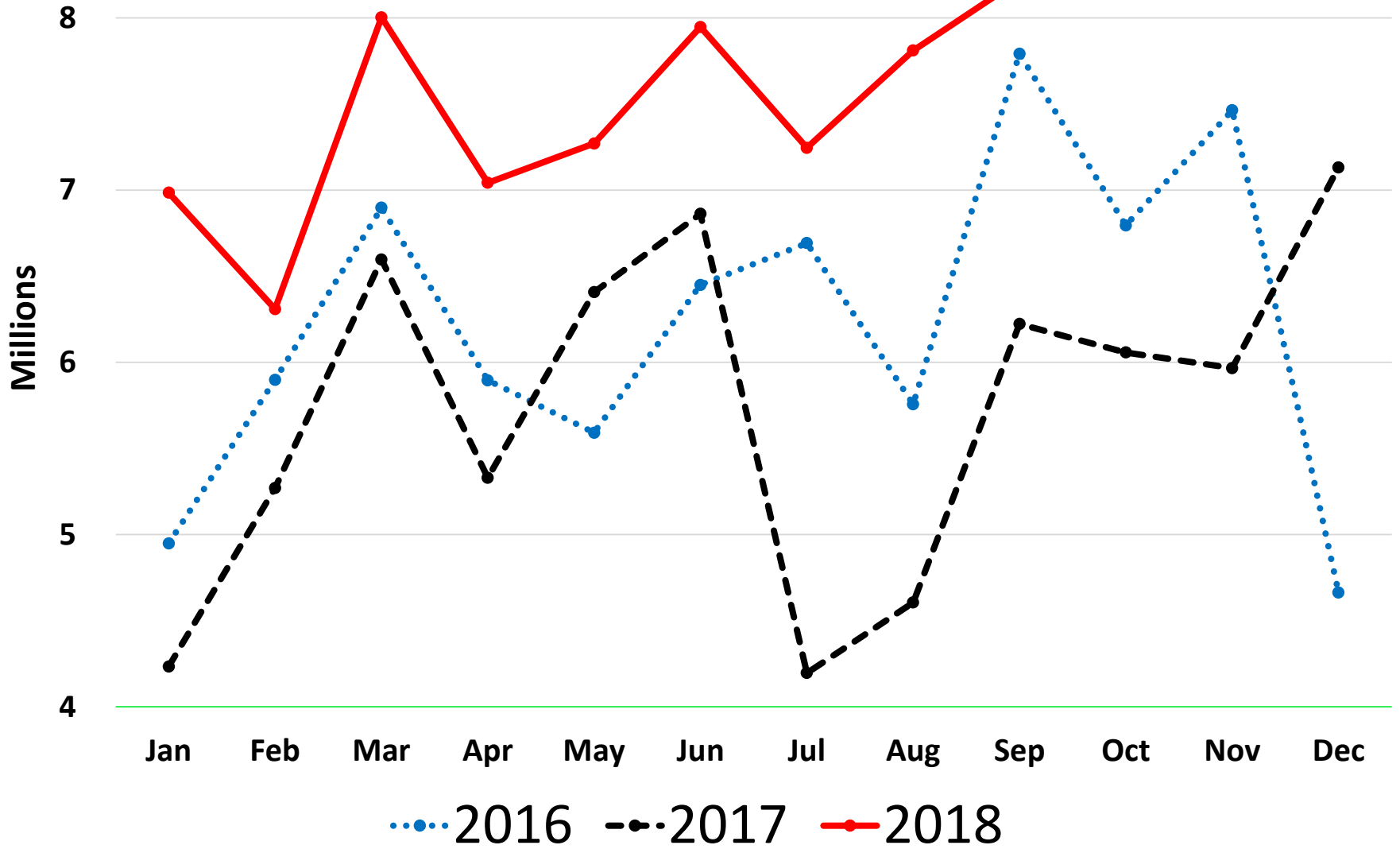


— Raws Procured   
 - - - Total Feeds   
 ..... Poultry Feeds   
 — Day Old Chicks

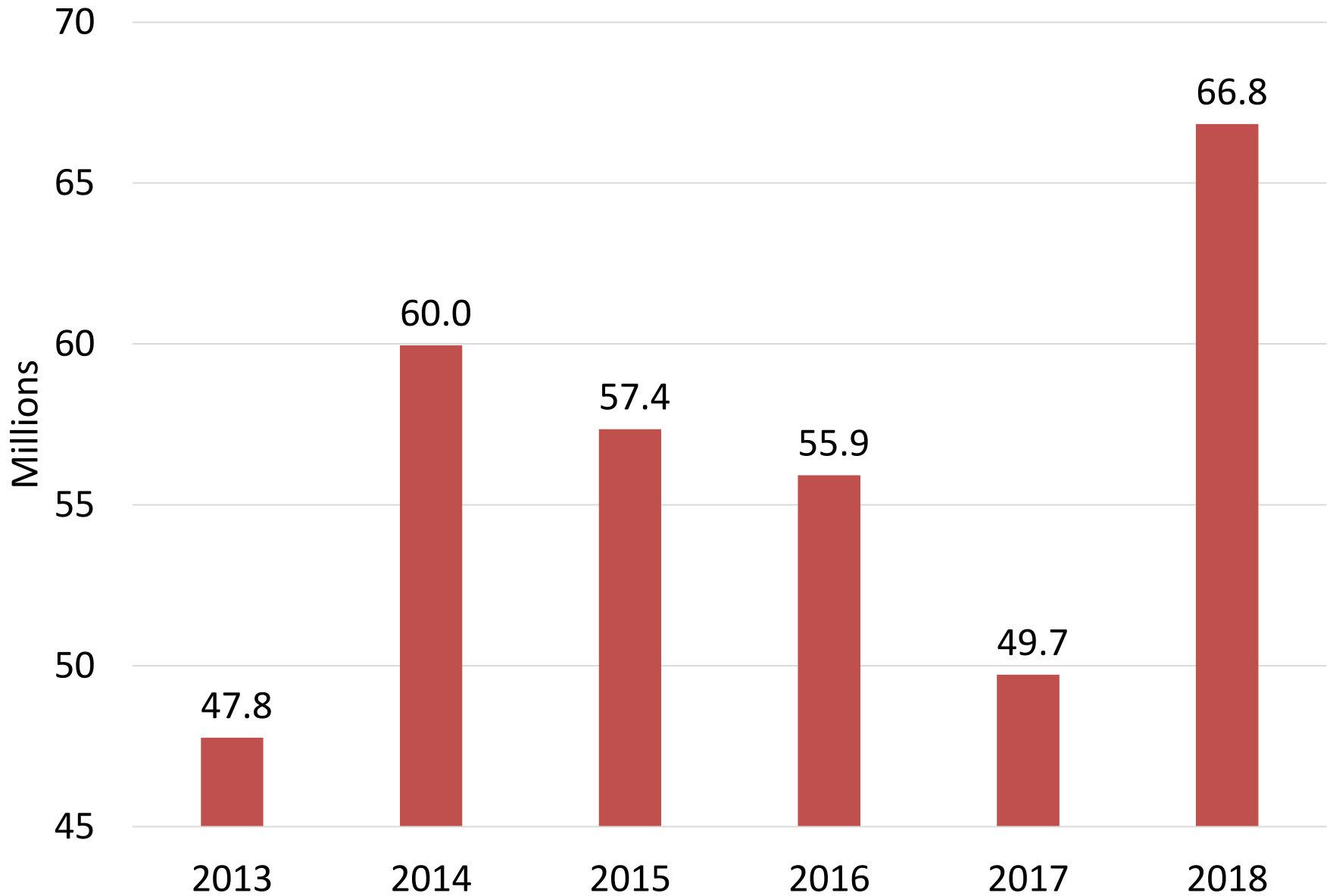
# Chick Production



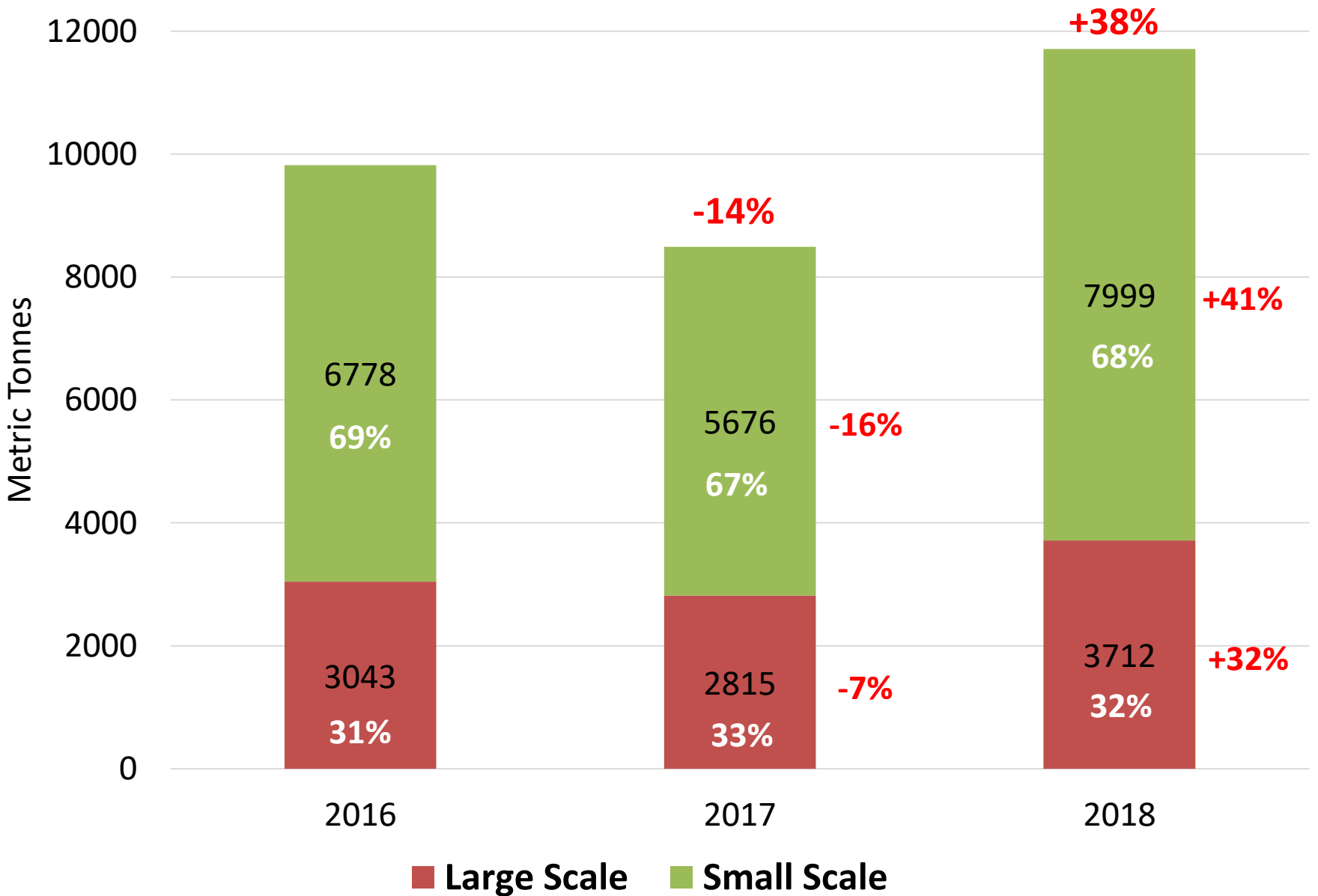
# Broiler Day Old Chicks



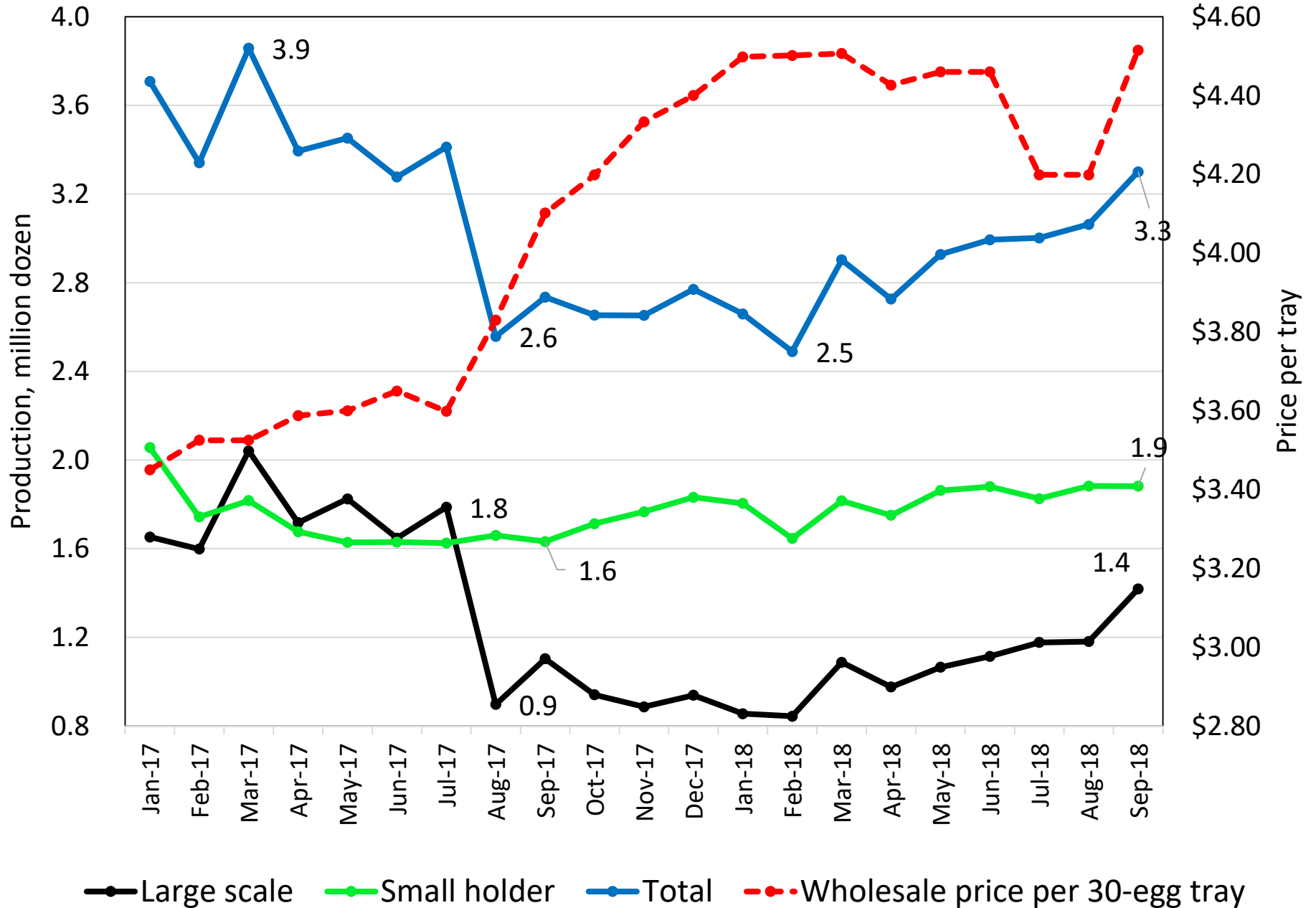
## Broiler Day Old Chikcs - January to September



# Broiler Average Monthly Meat Production, January to September



## Table Eggs (2 eggs per person per month)

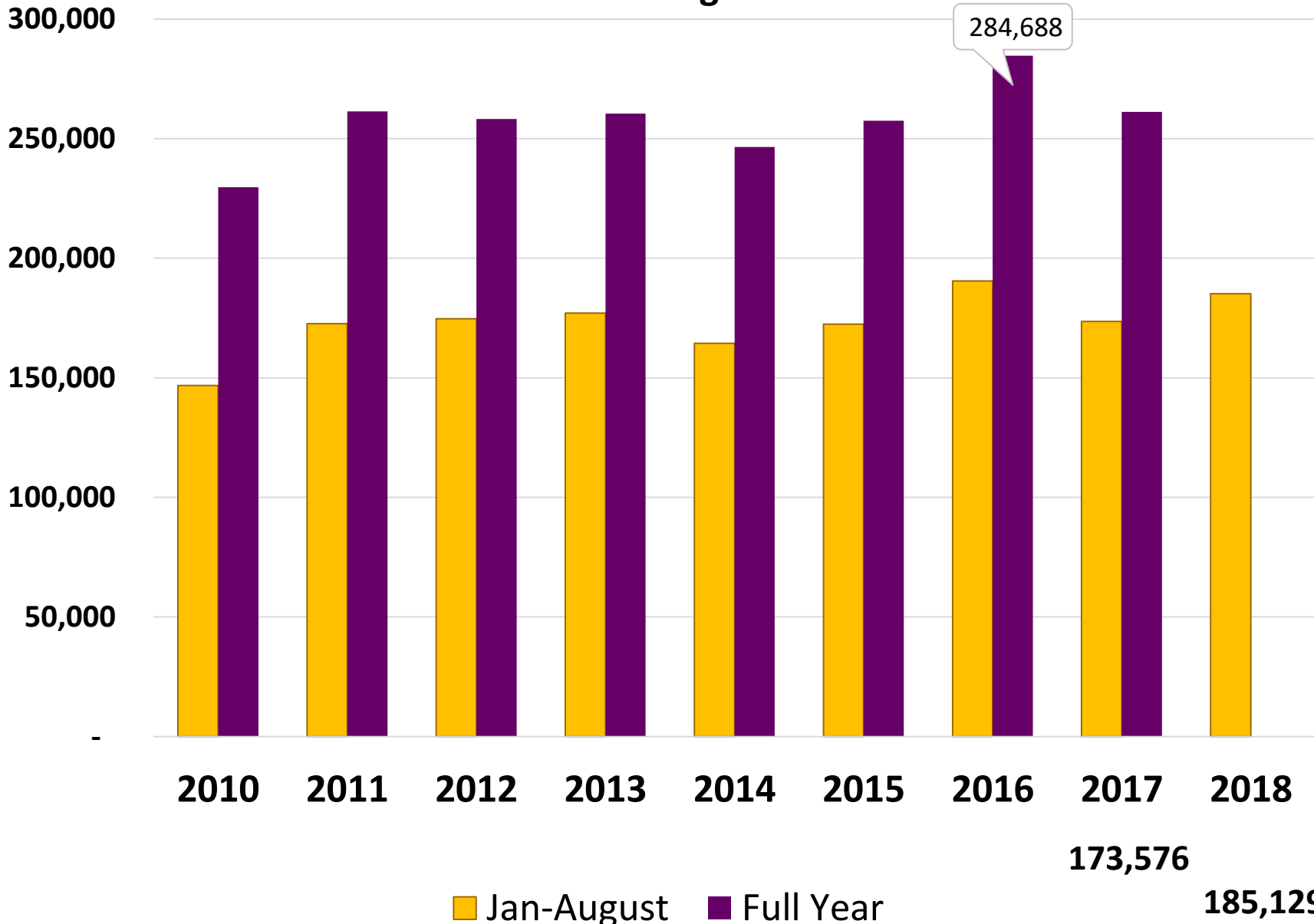




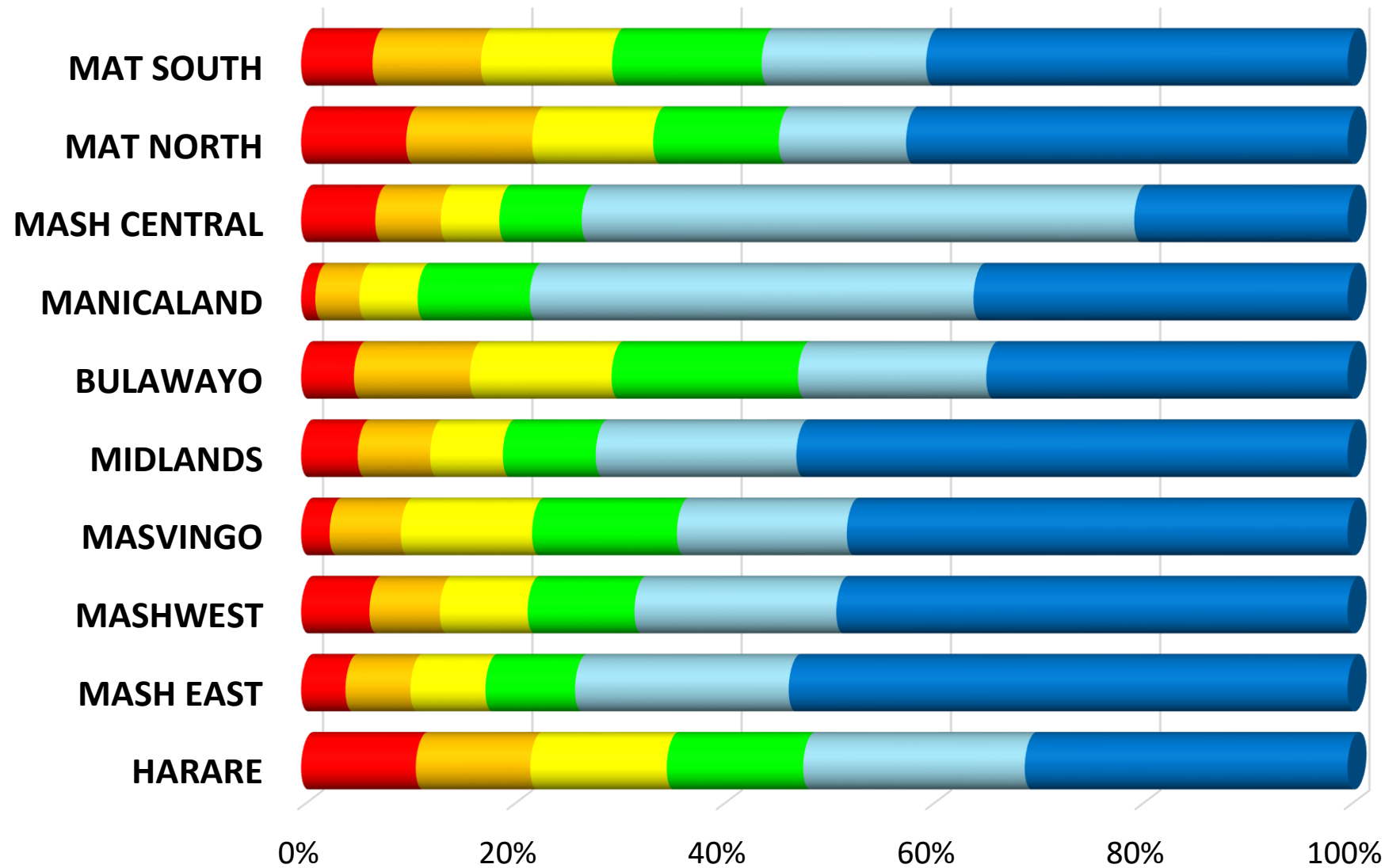
# Beef Cattle

- Total cattle population estimated to be 5.2million
- 80% of slaughter stock drawn from small scale farmers
- Despite widespread FMD, slaughter numbers to August were the second highest over the same period since 2010
- Abattoir operators are reporting buying pressure following demand from producers that sales be in hard currency

# Cattle Slaughters

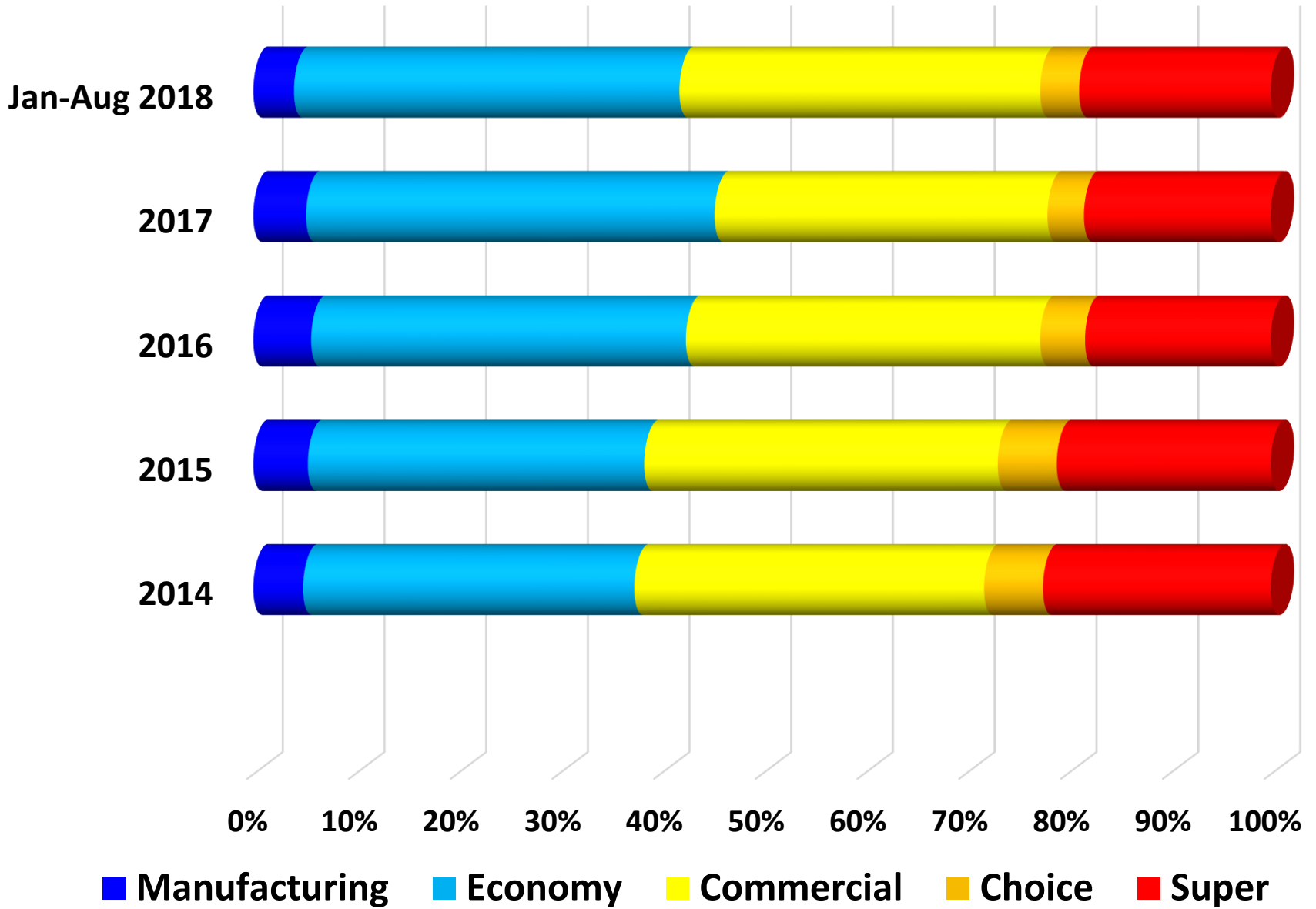


# Age Profile

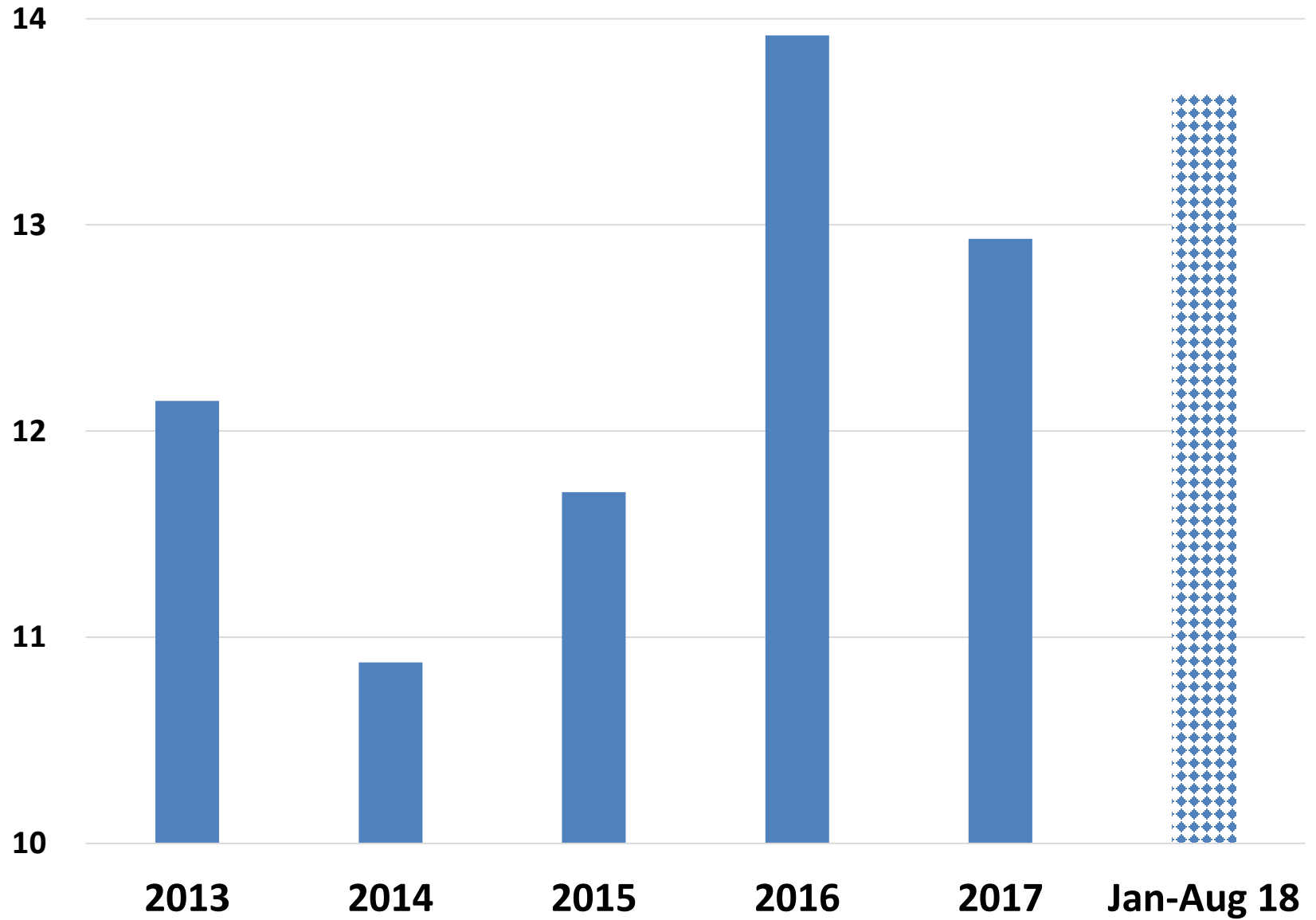


■ 0   
 ■ 2   
 ■ 4   
 ■ 6   
 ■ FM   
 ■ FA

# Slaughter Grades



## Pig Slaughters (000s per month)



# Zimbabwe Fish Producers Association

- Formed in 2016, to promote the production and marketing of farmed fish in the Zimbabwe
- Drives and coordinates the development of aquaculture in Zimbabwe
- Promote linkages between industry and research institutions in the development of the industry
- Works with government in the establishment of registered hatcheries to supply quality and disease-free fingerlings for the aquaculture industry
- Represent Zimbabwe on global aquaculture forums

# Meat Processors Association

- Formed in May 2015
- Address regulatory issues - 40% duty on Mechanically Deboned Meat - a key protein ingredient in the manufacture of cost sensitive meat protein products
- Promotes best practices to uphold highest biosafety and hygiene standards in the production, handling and supply of processed meat products
- Gained Government support to establish a cold chain facility for small to medium enterprises

# Issues – 2019 Budget Submission

- Financing Livestock Development
- Ever increasing marketing costs due to local authority regulatory levies
- Porous Borders
- Duty free imports of hatching eggs
- Agricultural Marketing Authority & National Biotechnology Authority regulations and cost of doing business



# Issues – 2019 Budget Submission

- Ethanol blending and its impact on molasses availability
- Access to soyabean meal for feed manufacture
- Surtax on raw hide exports
- Foot and Mouth Disease and Theileriosis impacts on livestock sector