



Exhibition Park, Samora Machel Avenue West, Belvedere
P. O. Box BE209, Belvedere, Harare
Phone: 024-2756 600, 2772 915, 2777 391
Email: admin@lit.co.zw

Raw Materials Usage and Feed Production Returns

June 2021

The tonnage, cost and value of raw materials procured and feeds manufactured for the Stockfeed Manufacturers Association for the period ending June 2021 are summarised in the tables and graphs below.

Returns were collated from the following twenty companies: ABS TCM Feeds, Agrifoods, Berghaan Feeds, Capital Feeds, Country Feeds, Edurate Investments, Fairhill Farm, Feedmix, Fivet Animal Health, Hamara Farm, Hyperfeeds, Ice Feeds, Irvine's Zimbabwe, Meadow Enterprises, Muller Bros, National Foods Ltd, Profeeds, Sunset Marketing, Triple C Pigs and Windmill.

Procurement of raw materials and production of stockfeeds in the second quarter of 2021 averaged 53,998 and 53,828mt per month respectively, representing increases of 34 and 35% respectively over the same period in 2020 and increases of 11% and 10% over the first quarter of 2021.

The average monthly cost of raw materials procured over the second quarter of 2021 was ZWL 2.4 billion (USD 19.6m), being increases of 207% (11%) respectively over the same period last year, and 28% (16%) respectively over the first quarter of 2021.

The average monthly value of feeds produced over the second quarter of 2021 was ZWL 3.1 billion (USD 26.4m), being an increase of 199% (12%) over the same period last year, and 16% (10%) over the first quarter of 2021.

The average cost of raw materials procured in the second quarter of 2021 was ZWL 44,237/mt (USD 362/mt) being an increase of 130% (21%) over the same period last year, and 15% (4%) over the first quarter of 2021.

Maize and soya procurements during the second quarter constituted the bulk of raw materials used, accounting for 49% and 23% of all raw materials procured by weight and 42% and 34% by value, respectively.

Average monthly procurement of maize in the second quarter of 2021 was 26,561mt worth ZWL 1.0 billion (USD 8.4m) and represented volume changes for the quarter of 46% (235% and 78% in ZWL and USD value terms) over the same period last year and 11% (16% and 8% in ZWL and USD value terms) over the first quarter of 2021.

Average monthly procurement of soya bean derivatives in the second quarter of 2021 was 12,568mt/month worth ZWL 0.8 billion (USD 6.5m) and represented volume changes for the quarter of 59% (+233% and 74% in ZWL and USD value terms) over the same period last year and 16% (36% and 20% in ZWL and USD value terms) over the first quarter of 2021.

Poultry feeds continue to dominate the stockfeed industry and in the second quarter accounted for 72% of all feeds produced by weight and 77% by monetary value. Production averaged 38,939mt/month, worth ZWL 2.4 billion (USD 26.4m), being increases of 48% in volume and 227% (62% in USD terms) in value respectively over the same period last year and increases of 9% in quantity and 16% (10% in USD terms) in value respectively over the first quarter of 2021.

The production of broiler and layer feeds were 61 and 25% higher than the second quarter of 2020, respectively, and 12% and -5% different compared with the first quarter of 2021.

Pig feeds averaged 5,055mt/month worth ZWL 261m (USD 2.5m) accounting for 9% by tonnage and 8% by value of total feeds produced in the first quarter. Ruminant feeds averaged 7,012mt/month worth ZWL 286m (USD 2.3m) accounting for 13% by tonnage and 9% by value of total feeds produced.

On average, prices of raw materials procured in the second quarter of 2021 increased by 14% (4% in USD terms) compared with the first quarter. Prices of maize and solvent extracted soya meal averaged ZWL 37,871 (USD 314) and ZWL 63,751 (USD 516)/mt, being changes of +5% (-2% in USD terms) and +25% (+9% in USD terms) on average first quarter prices.

First quarter prices of feeds increased by 9 and 2% in ZWL and USD terms. Average weighted wholesale prices of broiler and layer feeds changed by 6% (0% USD value terms) and 3% (0% USD value terms), respectively, to ZWL 64,445/mt (USD 534/mt) and ZWL 54,534/mt (USD 454/mt).

Second quarter (April to June) average monthly tonnages of raws procured and feeds produced, 2019 to 2021

	2019	2020	2021	change
Raws procured	59,176	40,411	53,998	34%
Maize	29,509	18,201	26,561	46%
Soya (bean equivalent)	16,807	10,158	15,775	55%
Maize + Soya	46,315	28,359	42,336	49%
Other inputs	12,860	12,052	11,662	-3%
Feeds produced	60,183	39,963	53,828	35%
Poultry feeds	40,787	26,285	38,939	48%
- Broiler feeds	27,536	16,540	26,577	61%
- Layer feeds	8,833	6,344	7,899	25%
Pig feeds	5,284	4,572	5,055	11%
Ruminant feeds	11,995	7,615	7,012	-8%
Fish feeds	528	398	442	11%
Other feeds	1,590	1,093	2,380	118%

Second quarter (April to June) average monthly prices (ZWL) of raws procured and poultry feeds produced, 2019 to 2021

	2019	2020	2021	change
Maize	693	16,506	37,871	129%
Soya meal - SE	2,940	30,112	63,751	112%
Weighted broiler feed price	2,020	30,769	64,445	109%
Weighted layer feed price	1,639	21,635	54,584	152%

Second quarter (April to June) average monthly values (millions ZWL) of raws procured and feeds produced, 2019 to 2021

	2019	2020	2021	change
Average cost of procurements, ZWL/mt	1,240	19,245	44,237	130%
Raws procured	73.4	778	2,389	207%
Maize	20.6	301	1,010	235%
Soya bean derivatives	35.4	242	807	233%
- Maize + Soya	56.0	543	1,816	234%
Other inputs	17.4	234	572	144%
Feeds produced	109.7	1,055	3,149	199%
Poultry feeds	79.3	742	2,424	227%
- Broiler feeds	56.5	506	1,717	240%
- Layer feeds	14.6	138	432	214%
Pig feeds	10.1	103	261	153%
Ruminant feeds	16.4	157	286	83%
Fish feeds	0.8	18	40	123%
Other feeds	3.1	35	138	298%

Second quarter (April to June) average monthly prices (USD) of raws procured and poultry feeds produced, 2019 to 2021

	2019	2020	2021	change
Maize	96	259	314	21%
Soya meal - SE	449	471	516	9%
Weighted broiler feed price	305	480	537	12%
Weighted layer feed price	245	345	454	31%

Second quarter (April to June) average monthly values (millions USD) of raws procured and feeds produced, 2019 to 2021

	2019	2020	2021	change
Parallel Rate	6.7	64.7	125.0	93%
Ave cost of procurements, \$/mt	182	301	362	21%
Raws procured	10.8	12.1	19.6	61%
Maize	2.9	4.7	8.4	78%
Soya bean derivatives	5.3	3.8	6.5	74%
Maize + Soya	8.1	8.5	14.9	76%
Other	2.6	3.7	4.6	26%
Feeds produced	16.2	16.2	26.4	62%
Poultry feeds	11.8	11.6	20.1	74%
Broiler feeds	8.4	7.9	14.3	80%
Layer feeds	2.2	2.2	3.6	64%
Breeder feeds	0.7	0.8	1.4	77%
Poultry concentrates	0.6	0.6	0.9	33%
Pig feeds	1.4	1.5	2.5	61%
Ruminant feeds	2.4	2.3	2.3	-2%
Aqua feeds	0.1	0.3	0.3	10%
Other feeds	0.5	0.5	1.1	128%

First half (January to June) average monthly tonnages of raws procured and feeds produced, 2019 to 2021

	2019	2020	2021
Raws procured	57,478	41,233	51,240
Maize	28,248	18,871	25,295
Soya (bean equivalent)	16,254	10,163	14,785
Maize + Soya	44,501	29,034	40,080
Other inputs	12,977	12,199	11,160
Feeds produced	57,807	40,485	51,412
Poultry feeds	38,932	27,199	37,266
- Broiler feeds	26,405	16,605	25,102
- Layer feeds	8,331	7,109	8,120
Pig feeds	5,154	4,393	4,890
Ruminant feeds	10,820	7,476	6,510
Fish feeds	522	292	424
Other feeds	2,379	1,125	2,322

First half (January to June) average monthly values (millions ZWL) of raws procured and feeds produced, 2019 to 2021

	2019	2020	2021
Average cost of procurements, ZWL/mt	993	14,504	41,826
Raws procured	57.1	598.1	2,129.5
Maize	14.3	238.0	939.3
Soya bean derivatives	27.4	182.0	700.1
- Maize + Soya	41.7	420.0	1,639.5
Other inputs	15.4	178.0	490.0
Feeds produced	82.7	784.0	2,927.0
Poultry feeds	60.1	568.1	2,254.6
- Broiler feeds	42.8	380.3	1,580.4
- Layer feeds	10.8	115.8	438.9
Pig feeds	7.5	73.2	237.0
Ruminant feeds	11.3	106.8	271.7
Fish feeds	0.6	11.2	37.3
Other feeds	3.3	24.8	126.4

First half (January to June) average monthly values (millions USD) of raws procured and feeds produced, 2019 to 2021

	2019	2020	2021
Parallel Rate	5.2	47.6	119.3
Ave cost of procurements, USD/mt	190	310	355
Raws procured	10.9	12.8	18.2
Maize	2.5	5.1	8.1
Soya bean derivatives	5.3	3.9	6.0
Maize + Soya	7.8	9.0	14.1
Other	3.1	3.8	4.2
Feeds produced	15.6	16.5	25.2
Poultry feeds	11.4	12.2	19.3
Broiler feeds	8.1	8.1	13.5
Layer feeds	2.0	2.6	3.7
Breeder feeds	0.7	0.9	1.3
Poultry concentrates	0.6	0.5	0.7
Pig feeds	1.4	1.5	2.3
Ruminant feeds	2.0	2.1	2.1
Aqua feeds	0.1	0.2	0.3
Other feeds	0.7	0.5	1.1

Average Monthly Tonnes of Raws Procured - 2020 to June 2021

Feed Raw Materials	2020				2021		Q2 '21	Q2 '21
	Jan-Mar	Apr-Jun	Jul-Sep	Oct-Dec	Jan-Mar	Apr-Jun	compared to Q2 '20	compared to Q1 '21
Maize	19,541	18,201	22,933	24,745	24,030	26,561	46%	11%
Sorghum	1,076	154	320	472	280	75	-51%	-73%
Soya beans	341	254	772	519	627	1,298	412%	107%
Soya meal - FF	1,070	935	1,370	2,240	1,302	1,459	56%	12%
Soya meal - ME	877	991	1,024	2,266	2,454	2,697	172%	10%
Soya meal - SE	5,657	5,720	7,501	6,228	6,491	7,114	24%	10%
Total Soya (bean equivalent)	10,169	10,158	13,575	14,144	13,795	15,775	55%	14%
Wheat Bran	3,905	4,193	5,523	6,664	5,419	5,385	28%	-1%
Maize Bran	4,140	4,800	5,523	4,977	3,119	3,783	-21%	21%
Rice Bran	132	122	90	236	87	90	-26%	4%
Screenings	96	44	68	54	64	128	190%	101%
Cotton cake < 30% CP	88	28	111	171	322	220	696%	-32%
Cotton meal >30% CP	662	668	584	532	260	378	-43%	45%
Cotton seed - Whole	119	58	84	248	190	37	-36%	-81%
Sunflower cake/meal	265	284	464	397	420	557	96%	32%
Molasses	525	497	855	933	400	500	1%	25%
Citrus Pulp	-	-	-	-	4	7		77%
Urea	54	127	130	51	49	58	-55%	18%
Salt	174	410	198	171	141	183	-55%	30%
Cotton hulls	233	264	415	426	140	278	5%	99%
Hay	232	89	217	199	88	152	70%	72%
MCP	165	153	191	195	170	272	78%	60%
Fine Limestone Flour	1,293	1,092	991	1,029	900	951	-13%	6%
Coarse Limestone Flour	499	435	535	436	559	506	17%	-9%
Methionine	38	38	46	47	46	59	57%	27%
Lysine	35	51	43	43	43	51	1%	20%
Meat and Bone Meal	338	333	447	360	364	509	52%	40%
Fish Meal	45	56	37	42	70	98	76%	40%
Vitamins and Premixes	456	414	440	403	444	592	43%	33%
Totals	42,055	40,411	50,913	54,082	48,482	53,998	34%	11%

Average Monthly Tonnes of Feeds Manufactured - 2020 to June 2021

Production/Sales	2020				2021		Q2 '21	Q2 '21
	Jan-Mar	Apr-Jun	Jul-Sep	Oct-Dec	Jan-Mar	Apr-Jun	compared to Q2 '20	Q1 '21
Poultry								
Broiler Starter	3,579	3,682	5,279	5,731	4,966	5,653	54%	14%
Broiler Grower	5,599	5,441	7,851	9,012	8,174	9,502	75%	16%
Broiler Finisher	7,493	7,417	8,643	10,985	10,487	11,422	54%	9%
Layer Rearing Feed	850	1,131	1,241	2,192	2,024	4,008	254%	98%
Layer Production Feeds	7,024	5,213	5,859	5,386	6,317	3,892	-25%	-38%
Poultry Breeder feeds	3,026	2,476	3,173	3,238	2,889	3,219	30%	11%
Poultry Concentrates	541	926	1,082	786	737	1,243	34%	69%
Dairy								
Dairy meals	2,967	3,009	3,294	3,530	3,940	3,131	4%	-21%
Beef								
Beef Pen Fattening	3,888	3,829	4,156	5,032	1,031	2,220	-42%	115%
Beef Maintenance Feeds	426	691	2,095	2,129	155	358	-48%	130%
Beef Concentrates	57	86	191	29	881	1,303	1412%	48%
Pig								
Juvenile Feeds	527	379	503	566	672	775	104%	15%
Growing and Fattening feeds	2,626	2,970	2,741	2,612	2,794	2,978	0%	7%
Pig Breeder Feeds	625	628	602	576	804	750	19%	-7%
Pig Concentrates	438	594	797	567	455	552	-7%	21%
Fish								
Aqua Feeds	186	398	208	256	407	442	11%	9%
Sundry Feeds								
Road Runner	476	414	586	1,071	1,413	1,217	194%	-14%
Horse	214	166	203	218	190	352	112%	85%
Dog	166	187	262	193	222	288	54%	30%
All Other species feeds	300	325	514	586	438	523	61%	20%
Totals	41,008	39,963	49,280	54,693	48,997	53,828	35%	10%
Poultry feeds								
Broiler	16,671	16,540	21,774	25,727	23,627	26,577	61%	12%
Layer	7,875	6,344	7,100	7,578	8,342	7,899	25%	-5%
Breeder	3,026	2,476	3,173	3,238	2,889	3,219	30%	11%
Concentrates	541	926	1,082	786	737	1,243	34%	69%
Poultry - Total	28,113	26,285	33,128	37,328	35,594	38,939	48%	9%
Broiler day old chicks, millions	5.68	4.59	6.51	7.05	6.82	7.40	61%	9%
Sexed pullets, thousands	209	145	251	198	265	275	89%	4%

Average Monthly Prices (ZWL) of Raws Procured - 2020 to June 2021

Feed Raw Materials	2020				2021		Q2 '21
	Jan-Mar	Apr-Jun	Jul-Sep	Oct-Dec	Jan-Mar	Apr-Jun	vs Q1 '20
Maize	8,727	16,506	24,964	28,570	35,964	37,871	5%
Sorghum	6,566	12,436	21,993	28,177	26,086	33,533	29%
Soya beans	15,660	27,488	40,267	42,791	51,703	58,167	13%
Soya meal - FF	15,421	32,893	43,421	40,144	63,122	68,024	8%
Soya meal - ME	12,190	29,912	46,395	49,537	60,300	64,167	6%
Soya meal - SE	15,458	30,112	44,586	47,736	50,885	63,751	25%
Wheat Bran	5,232	10,707	14,039	15,118	18,470	20,089	9%
Maize Bran	4,339	8,944	12,674	15,461	19,551	19,258	-1%
Rice Bran	5,167	10,246	12,684	12,401	11,670	12,991	0%
Screenings	3,035	6,498	2,689	8,750	10,898	10,218	-6%
Cotton cake < 30% CP	5,198	10,286	24,435	33,996	33,313	32,463	-3%
Cotton meal >30% CP	9,903	21,026	32,124	32,161	37,506	40,878	9%
Cotton seed - Whole	7,758	16,188	25,246	22,252	25,847	34,775	35%
Sunflower cake/meal	7,135	17,220	26,744	26,977	35,183	37,156	6%
Molasses	4,324	9,634	15,134	15,890	18,601	20,374	10%
Urea	13,219	31,080	49,642	55,701	47,985	56,847	18%
Salt	6,119	12,561	22,090	21,555	25,843	21,415	-17%
Cotton hulls	3,789	8,153	13,345	13,445	13,551	15,099	11%
Hay	5,875	12,520	15,179	15,216	16,898	26,977	60%
MCP	22,998	41,599	68,785	66,022	77,655	59,611	-23%
Fine Limestone Flour	3,654	6,857	11,375	11,744	13,251	14,671	11%
Coarse Limestone Flour	3,969	7,903	11,875	10,323	13,112	17,384	33%
Methionine	68,217	123,438	221,102	234,471	302,925	303,125	0%
Lysine	38,158	73,552	122,968	131,298	171,153	223,166	30%
Meat and Bone Meal	14,328	24,529	58,468	59,464	72,296	87,543	21%
Fish Meal	26,859	57,801	94,563	116,098	124,902	159,863	28%
Vitamins & Premixes	82,463	153,991	224,623	252,653	203,702	311,393	53%

Average Monthly Prices (ZWL) of Feeds Manufactured - 2020 to June 2021

Feed Raw Materials	2020				2021		Q2 '21 vs Q1 '20
	Jan-Mar	Apr-Jun	Jul-Sep	Oct-Dec	Jan-Mar	Apr-Jun	
Broiler Starter	15,483	32,550	44,933	46,989	63,511	68,395	8%
Broiler Grower	15,221	31,646	43,569	45,963	61,299	64,739	6%
Broiler Finisher	14,741	29,191	41,772	43,421	59,654	62,260	4%
Layer Rearing Feed	12,101	23,250	34,066	37,921	53,915	56,069	4%
Layer Production Feeds	11,606	21,267	32,157	34,652	52,977	52,973	0%
Poultry Breeder feeds	10,899	21,008	32,574	34,831	49,191	53,246	8%
Poultry Concentrates	20,745	45,039	61,574	65,685	71,968	82,258	14%
Dairy							
Dairy meals	7,833	23,646	29,154	32,247	45,770	43,392	-5%
Beef							
Beef Pen Fattening	7,380	17,824	23,608	23,012	28,650	30,038	5%
Beef Maintenance Feeds	13,126	16,292	22,339	14,348	31,303	32,525	4%
Beef Concentrates	21,332	10,172	-	-	48,113	53,584	
Pig							
Juvenile Feeds	12,864	28,311	44,191	53,002	65,739	75,446	15%
Growing and Fattening feeds	8,804	18,218	32,201	34,305	37,277	43,167	16%
Pig Breeder Feeds	9,204	19,801	34,401	35,293	44,431	48,058	8%
Pig Concentrates	16,207	36,793	48,343	44,708	59,948	66,207	10%
Fish							
Aqua Feeds	21,700	47,683	67,352	72,726	85,045	90,623	7%
Sundry							
Road Runner	13,126	27,471	39,051	33,225	48,615	52,757	9%
Horse	10,187	22,769	34,228	36,837	46,102	50,724	10%
Dog	18,007	37,645	47,412	53,885	69,795	83,752	20%
Blended Prices of Poultry Feeds							
Broiler	15,055	30,769	43,192	45,120	61,033	64,445	6%
Layer	11,657	21,635	32,490	35,600	53,200	54,584	3%

Average Monthly Prices (USD) of Raws Procured - 2020 to June 2021

Feed Raw Materials	2020				2021		Q2 '21
	Jan-Mar	Apr-Jun	Jul-Sep	Oct-Dec	Jan-Mar	Apr-Jun	vs Q1 '20
Maize	281	259	237	262	321	314	-2%
Sorghum	217	187	209	259	276	285	3%
Soya beans	518	432	383	393	461	477	3%
Soya meal - FF	508	518	413	367	545	547	0%
Soya meal - ME	418	477	441	455	533	521	-2%
Soya meal - SE	505	471	424	438	475	516	9%
Wheat Bran	167	167	134	139	182	178	-2%
Maize Bran	140	139	121	141	188	172	-8%
Rice Bran	174						
Screenings	101	116	26	80	206	260	26%
Cotton cake < 30% CP	174	150	232	313	313	299	-4%
Cotton meal >30% CP	324	329	306	295	326	342	5%
Cotton seed - Whole	251	252	240	204	241	151	-38%
Sunflower cake/meal	240	261	254	248	319	336	5%
Molasses	141	149	144	146	174	136	-22%
Citrus Pulp							
Urea	442	484	472	510	361	357	-1%
Salt	203	192	210	198	206	163	-21%
Cotton hulls	128	125	127	123	117	111	-5%
Hay	199	190	144	140	295	486	65%
MCP	760	652	654	606	584	475	-19%
Fine Limestone Flour	121	105	108	108	110	118	8%
Coarse Limestone Flour	128	124	113	98	115	144	25%
Methionine	2,275	1,988	2,104	2,152	2,605	2,387	-8%
Lysine	1,273	1,207	1,170	1,206	1,495	1,689	13%
Meat and Bone Meal	463	387	556	545	682	774	13%
Fish Meal	928	907	900	1,066	1,244	1,492	20%
Vitamins & Premixes	2,767	2,592	2,137	2,306	1,712	2,200	29%

Average Monthly Prices (USD) of Feeds Manufactured - 2020 to June 2021

Feed Raw Materials	2020				2021		Q2 '21 vs Q1 '20
	Jan-Mar	Apr-Jun	Jul-Sep	Oct-Dec	Jan-Mar	Apr-Jun	
Broiler Starter	511	509	427	431	564	570	1%
Broiler Grower	503	495	414	422	541	542	0%
Broiler Finisher	490	456	397	398	525	518	-1%
Layer Rearing Feed	407	361	324	348	463	455	-2%
Layer Production Feeds	385	341	306	317	470	453	-4%
Poultry Breeder feeds	361	328	310	319	435	444	2%
Poultry Concentrates	683	701	586	606	652	688	6%
Dairy							
Dairy meals	271	366	277	296	360	335	-7%
Beef							
Beef Pen Fattening	245	274	225	211	242	261	8%
Beef Maintenance Feeds	417	254	213	133	306	283	-8%
Beef Concentrates	694	214	-	-	300	423	
Pig							
Juvenile Feeds	430	437	420	487	546	538	-2%
Growing and Fattening feeds	292	282	306	315	439	467	6%
Pig Breeder Feeds	306	304	327	324	468	451	-3%
Pig Concentrates	534	570	460	410	559	579	4%
Fish							
Aqua Feeds	701	736	641	668	771	732	-5%
Sundry							
Road Runner	435	429	371	305	462	477	3%
Horse	336	348	326	338	410	421	3%
Dog	609	588	451	494	721	659	-9%
Blended Prices of Poultry Feeds							
Broiler	499	480	411	414	539	537	0%
Layer	387	345	309	326	468	454	-3%

Average Monthly Cost of Raws Procured (ZWL 000) - 2020 to June 2021

Feed Raw Materials	2020				2021		Q2 '21	Q2 '21
	Jan-Mar	Apr-Jun	Jul-Sep	Oct-Dec	Jan-Mar	Apr-Jun	compared to	
							Q2 '20	Q1 '21
Maize	175,039	300,991	574,626	709,488	869,181	1,009,511	235%	16%
Sorghum	5,925	2,053	6,829	13,457	7,450	2,525	23%	-66%
Soya beans	4,959	7,310	31,176	22,295	32,155	75,084	927%	134%
Soya meal - FF	16,541	30,569	59,543	90,922	82,175	99,760	226%	21%
Soya meal - ME	10,731	29,029	47,652	112,523	148,325	173,779	499%	17%
Soya meal - SE	89,588	175,321	336,443	298,444	330,884	458,115	161%	38%
Total Soya	121,819	242,229	474,815	524,184	593,539	806,738	233%	36%
Wheat Bran	21,023	46,274	77,611	101,076	100,257	108,373	134%	8%
Maize Bran	18,599	44,242	70,163	76,285	60,838	73,917	67%	21%
Rice Bran	670	1,273	1,147	2,834	1,015	1,226	-4%	21%
Screenings	300	300	177	468	696	1,300	333%	87%
Cotton cake < 30% CP	428	446	2,707	5,736	10,772	7,147	1501%	-34%
Cotton meal >30% CP	6,704	14,464	18,973	17,115	9,789	15,447	7%	58%
Cotton seed - Whole	916	955	2,122	5,543	4,878	1,275	33%	-74%
Sunflower cake/meal	1,917	5,399	12,398	10,741	14,959	20,695	283%	38%
Molasses	2,185	5,184	13,073	14,749	7,447	10,291	99%	38%
Citrus Pulp	-	-	-	-	-	569		
Urea	702	4,629	6,247	2,751	2,325	3,304	-29%	42%
Salt	1,076	4,025	4,351	3,701	3,647	3,934	-2%	8%
Cotton hulls	910	2,384	5,480	5,676	1,899	4,284	80%	126%
Hay	1,310	1,223	3,324	3,024	1,540	3,726	205%	142%
MCP	3,839	6,532	13,335	12,863	13,202	16,069	146%	22%
Fine Limestone Flour	4,772	7,170	11,305	12,086	11,952	14,021	96%	17%
Coarse Limestone Flour	2,102	3,518	6,373	2,894	7,380	8,762	149%	19%
Methionine	2,615	4,643	10,461	11,124	14,139	17,941	286%	27%
Lysine	1,393	3,716	5,388	5,595	7,477	11,509	210%	54%
Meat and Bone Meal	4,899	8,138	26,094	21,556	26,309	44,970	453%	71%
Fish Meal	1,220	3,129	3,490	4,902	8,703	15,738	403%	81%
Vitamins and Premixes	38,036	64,789	98,776	102,740	90,804	185,431	186%	104%
Totals	418,396	777,706	1,449,266	1,668,660	1,870,200	2,388,703	207%	28%

Average Monthly Value of Feeds Manufactured (ZWL 000) - 2020 to June 2021

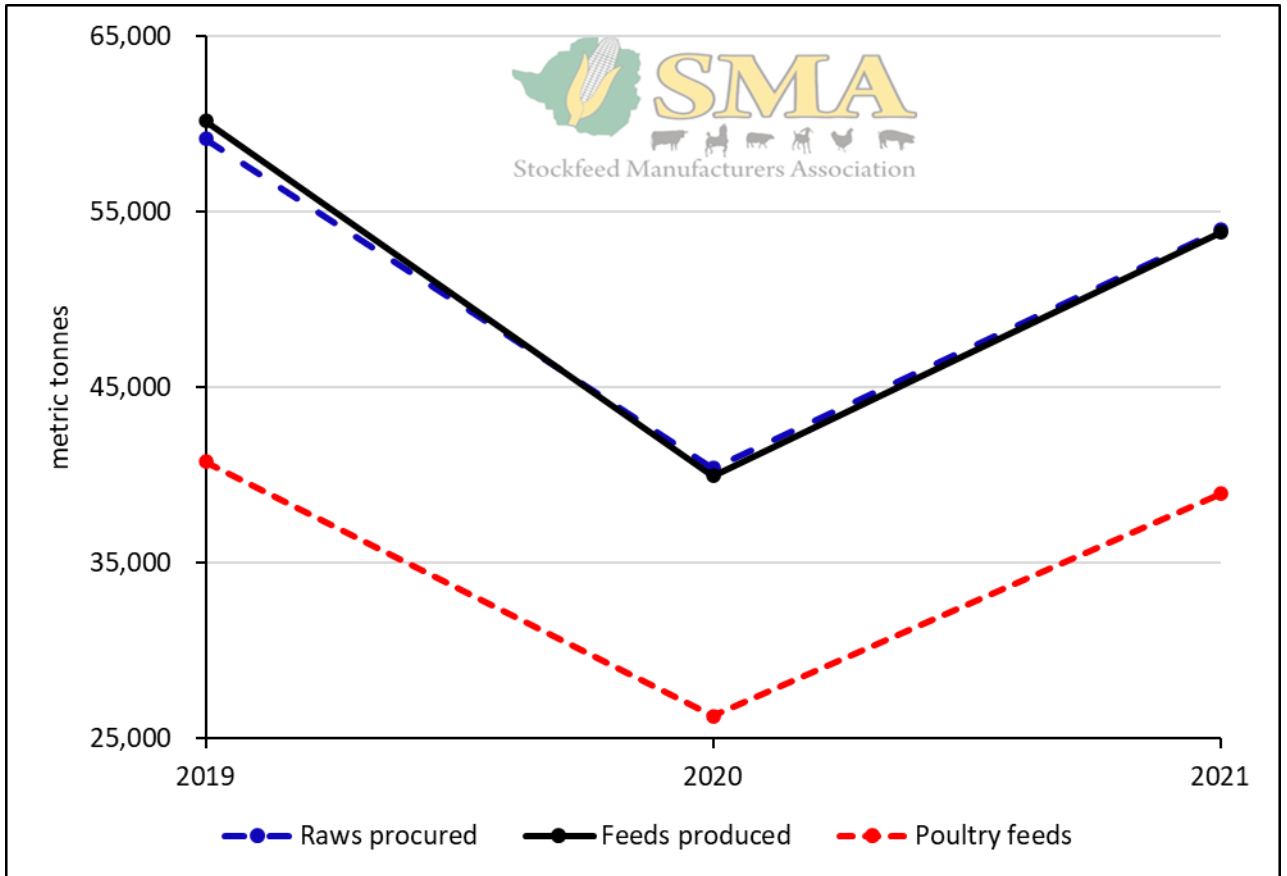
Production/Sales	2020				2021		Q2 '21	Q2 '21
	Jan-Mar	Apr-Jun	Jul-Sep	Oct-Dec	Jan-Mar	Apr-Jun	compared to Q2 '20	Q1 '21
Poultry								
Broiler Starter	56,394	121,060	237,642	269,139	316,229	387,647	220%	23%
Broiler Grower	86,157	172,909	342,719	415,128	501,498	617,093	257%	23%
Broiler Finisher	112,339	211,812	361,573	479,862	625,725	712,509	236%	14%
Layer Rearing Feed	10,400	26,609	42,214	83,365	109,521	224,926	745%	105%
Layer Production Feeds	83,516	111,093	189,802	187,894	336,001	207,396	87%	-38%
Poultry Breeder feeds	33,865	54,896	103,546	113,034	143,206	171,428	212%	20%
Poultry Concentrates	11,188	43,944	66,544	52,015	52,780	103,230	135%	96%
Dairy								
Dairy meals	23,152	72,410	96,104	114,697	180,562	135,989	88%	-25%
Beef								
Beef Pen Fattening	28,734	71,222	98,390	116,248	29,830	67,827	-5%	127%
Beef Maintenance Feeds	4,015	12,303	46,632	33,818	4,866	11,935	-3%	145%
Beef Concentrates	1,083	685	350	931	41,752	70,563	10207%	69%
Pig								
Juvenile Feeds	6,875	10,103	22,271	29,984	44,625	58,512	479%	31%
Growing and Fattening feeds	23,580	56,248	88,159	90,002	105,292	128,882	129%	22%
Pig Breeder Feeds	5,887	12,640	20,772	20,445	36,272	36,011	185%	-1%
Pig Concentrates	7,123	23,890	38,580	25,580	27,320	37,103	55%	36%
Fish								
Aqua Feeds	4,416	17,975	14,006	18,692	34,600	40,012	123%	16%
Sundry Feeds								
Road Runner	6,387	11,851	22,885	35,574	68,805	64,191	442%	-7%
Horse	2,348	4,008	6,954	8,034	8,804	17,823	345%	102%
Dog	2,834	7,708	12,434	10,307	15,625	24,345	216%	56%
All Other species feeds	3,175	11,201	16,378	15,949	21,410	31,880	185%	49%
Totals	513,467	1,054,566	1,827,956	2,120,698	2,704,722	3,149,304	199%	16%
Poultry feeds								
Broiler	254,890	505,782	941,934	1,164,129	1,443,451	1,717,250	240%	19%
Layer	93,916	137,702	232,016	271,259	445,522	432,322	214%	-3%
Breeder	33,865	54,896	103,546	113,034	143,206	171,428	212%	20%
Concentrates	11,188	43,944	66,544	52,015	52,780	103,230	135%	96%
Poultry - Total	393,860	742,324	1,344,040	1,600,436	2,084,959	2,424,231	227%	16%

Average Monthly Cost of Raws Procured (USD 000) - 2020 to June 2021

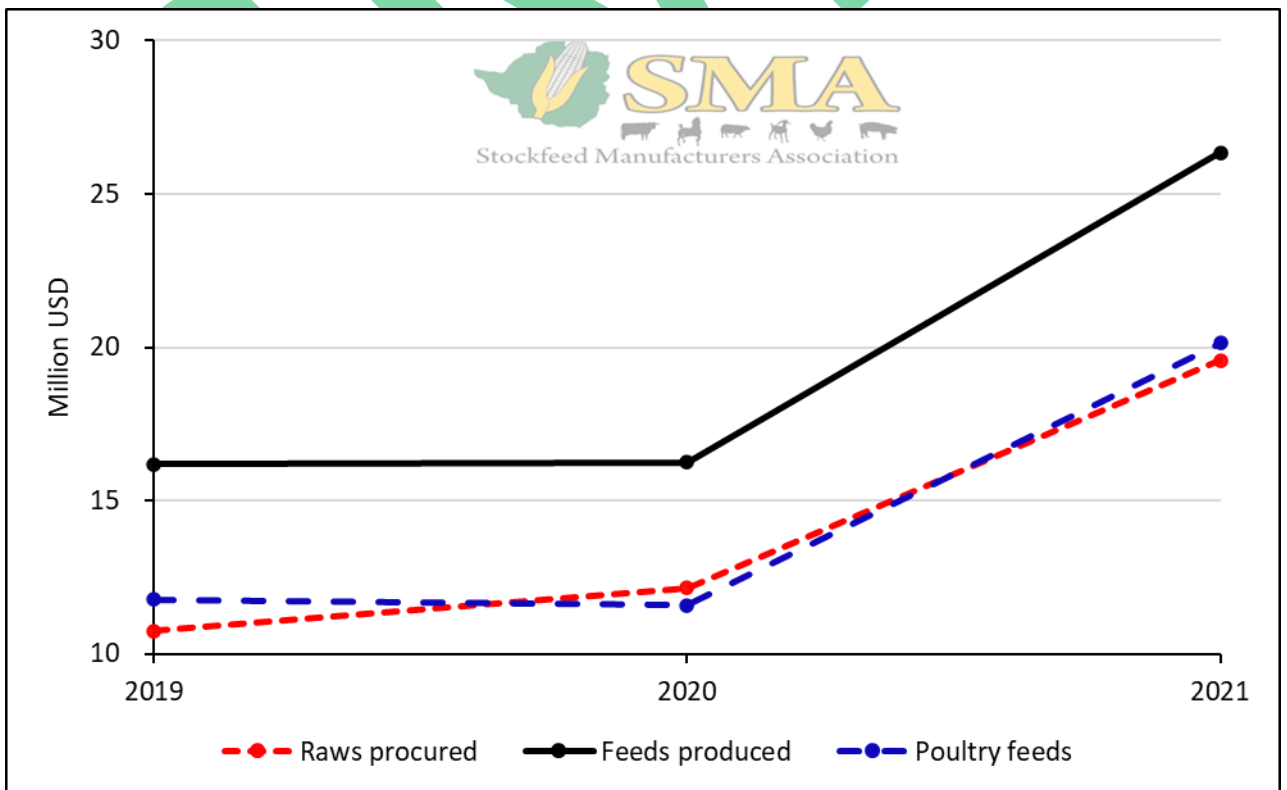
Feed Raw Materials	2020				2021		Q2 '21 compared to	
	Jan-Mar	Apr-Jun	Jul-Sep	Oct-Dec	Jan-Mar	Apr-Jun	Q2 '20	Q1 '21
Maize	5,535	4,709	5,467	6,489	7,728	8,384	19%	8%
Sorghum	223	29	65	124	76	21	91%	-72%
Soya beans	178	108	297	203	293	619	-31%	111%
Soya meal - FF	544	486	567	829	709	798	46%	13%
Soya meal - ME	354	482	453	1,033	1,300	1,407	128%	8%
Soya meal - SE	2,865	2,684	3,201	2,731	3,088	3,696	-15%	20%
Total Soya	3,942	3,760	4,518	4,797	5,465	6,541	6%	20%
Wheat Bran	659	697	738	924	987	960	25%	-3%
Maize Bran	586	666	668	698	585	653	5%	12%
Rice Bran	23	21	11	26	10	-	141%	-100%
Screenings	10	5	2	4	13	33	156%	154%
Cotton cake < 30% CP	16	5	26	52	101	65	104%	-35%
Cotton meal >30% CP	215	219	181	157	85	129	-13%	52%
Cotton seed - Whole	29	14	20	51	46	6	152%	-88%
Sunflower cake/meal	63	76	118	98	136	187	-17%	38%
Molasses	73	74	124	136	70	68	9%	-3%
Urea	24	59	59	26	17	21	-57%	22%
Salt	35	71	41	34	29	30	-18%	2%
Cotton hulls	29	33	52	53	16	31	1%	89%
Hay	49	17	32	28	26	77	-11%	195%
MCP	125	99	127	118	100	128	-7%	28%
Fine Limestone Flour	156	114	108	111	98	113	3%	14%
Coarse Limestone Flour	65	54	61	28	64	72	-55%	12%
Methionine	85	75	100	102	121	141	2%	17%
Lysine	45	66	51	51	64	87	0%	36%
Meat and Bone Meal	156	129	248	197	249	395	-21%	59%
Fish Meal	42	51	33	45	87	148	34%	70%
Vitamins and Premixes	1,252	1,101	940	936	760	1,302	0%	71%
Totals	13,437	12,146	13,789	15,266	16,857	19,570	11%	16%

Average Monthly Value of Feeds Manufactured (USD 000) - 2020 to June 2021

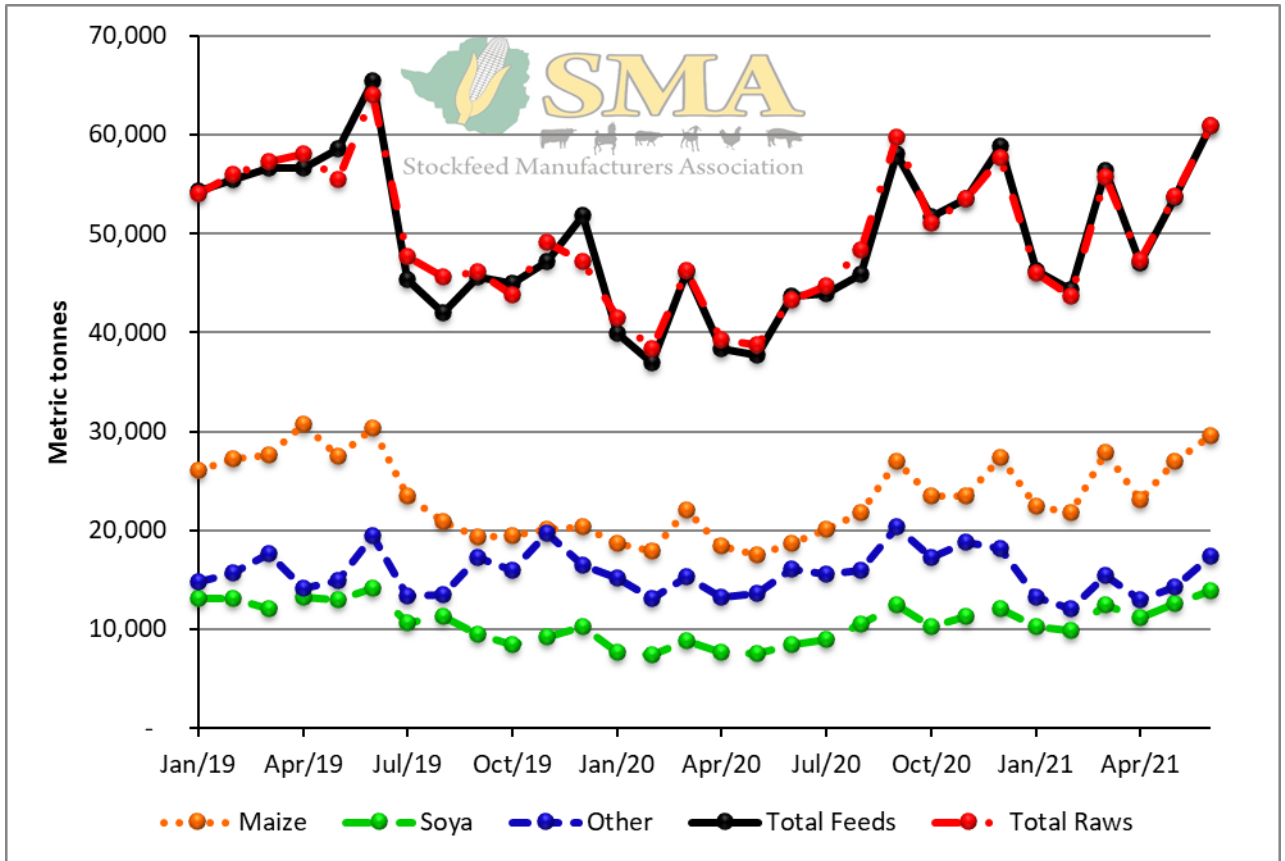
<u>Production/Sales</u>	<u>2020</u>				<u>2021</u>		Q2	Q2
	Jan-Mar	Apr-Jun	Jul-Sep	Oct-Dec	Jan-Mar	Apr-Jun	'21	'21
							compared to	
							Q2	Q1
							'20	'21
Poultry								
Broiler Starter	1,827	1,874	2,261	2,470	2,803	3,214	9%	15%
Broiler Grower	2,812	2,683	3,261	3,801	4,419	5,145	17%	16%
Broiler Finisher	3,657	3,392	3,440	4,383	5,506	5,918	27%	7%
Layer Rearing Feed	340	408	402	763	939	1,818	90%	94%
Layer Production Feeds	2,690	1,776	1,806	1,715	2,964	1,757	-5%	-41%
Poultry Breeder feeds	1,087	802	985	1,034	1,258	1,421	5%	13%
Poultry Concentrates	371	646	633	481	479	857	-24%	79%
Dairy								
Dairy meals	793	1,100	914	1,047	1,419	1,050	14%	-26%
Beef								
Beef Pen Fattening	952	1,048	936	1,063	251	581	14%	132%
Beef Maintenance Feeds	143	173	444	315	48	101	-29%	112%
Beef Concentrates	39	12	3	9	264	552	164%	109%
Pig								
Juvenile Feeds	225	166	212	274	369	417	29%	13%
Growing and Fattening feeds	763	837	839	821	1,228	1,392	-2%	13%
Pig Breeder Feeds	190	191	198	186	375	339	-6%	-10%
Pig Concentrates	235	338	367	233	255	321	-36%	26%
Fish								
Aqua Feeds	133	293	133	170	311	323	28%	4%
Sundry Feeds								
Road Runner	207	177	218	326	654	580	50%	-11%
Horse	71	58	66	73	78	148	11%	89%
Dog	92	108	118	95	162	191	-20%	18%
All Other species feeds	110	161	156	147	179	229	-6%	28%
Totals	16,737	16,244	17,391	19,407	23,961	26,355	12%	10%
Poultry feeds								
Broiler	8,296	7,949	8,962	10,653	12,728	14,277	19%	12%
Layer	3,030	2,184	2,207	2,478	3,903	3,575	12%	-8%
Breeder	1,087	802	985	1,034	1,258	1,421	5%	13%
Concentrates	371	646	633	481	479	857	-24%	79%
Poultry - Total	12,784	11,581	12,787	14,647	18,369	20,131	15%	10%



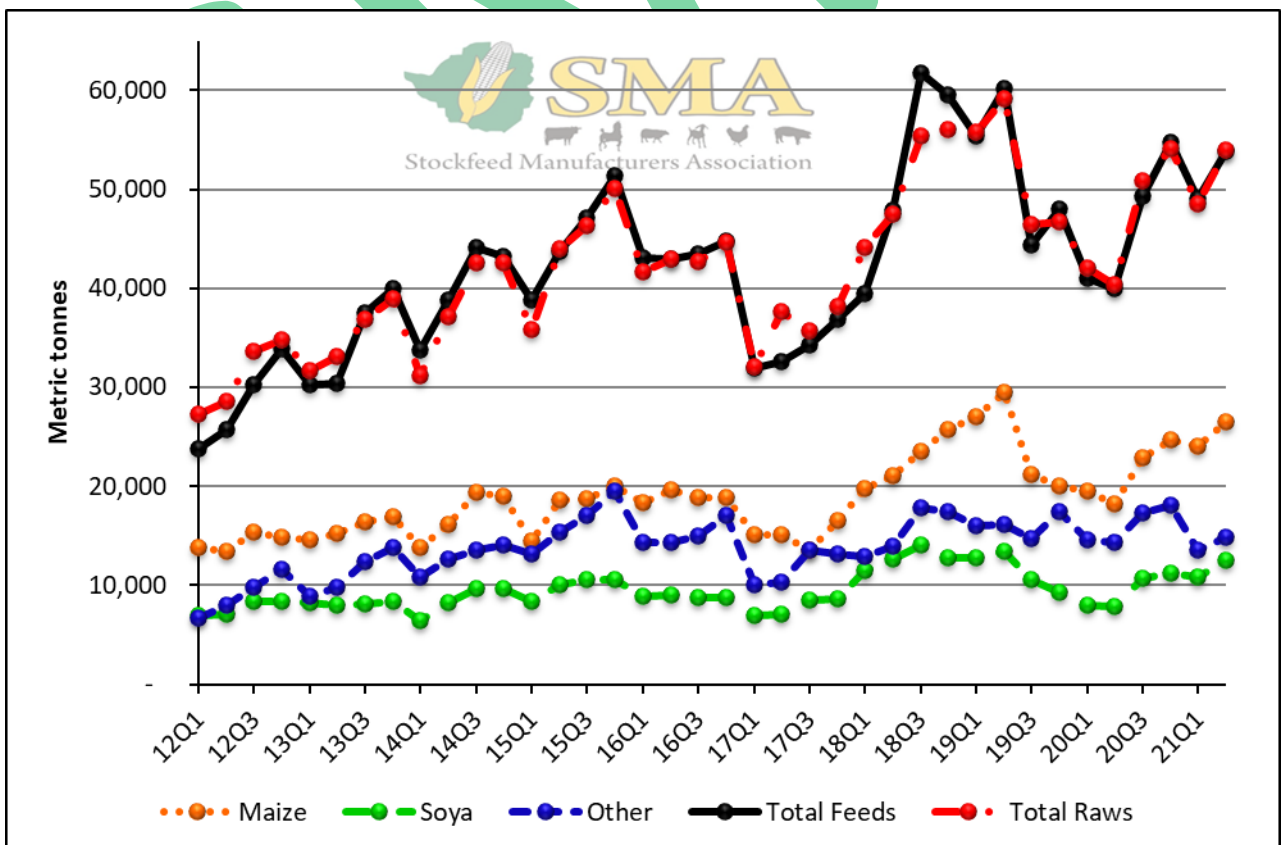
Second Quarter Monthly Average Tonnages of Raws Procured and Feeds Produced



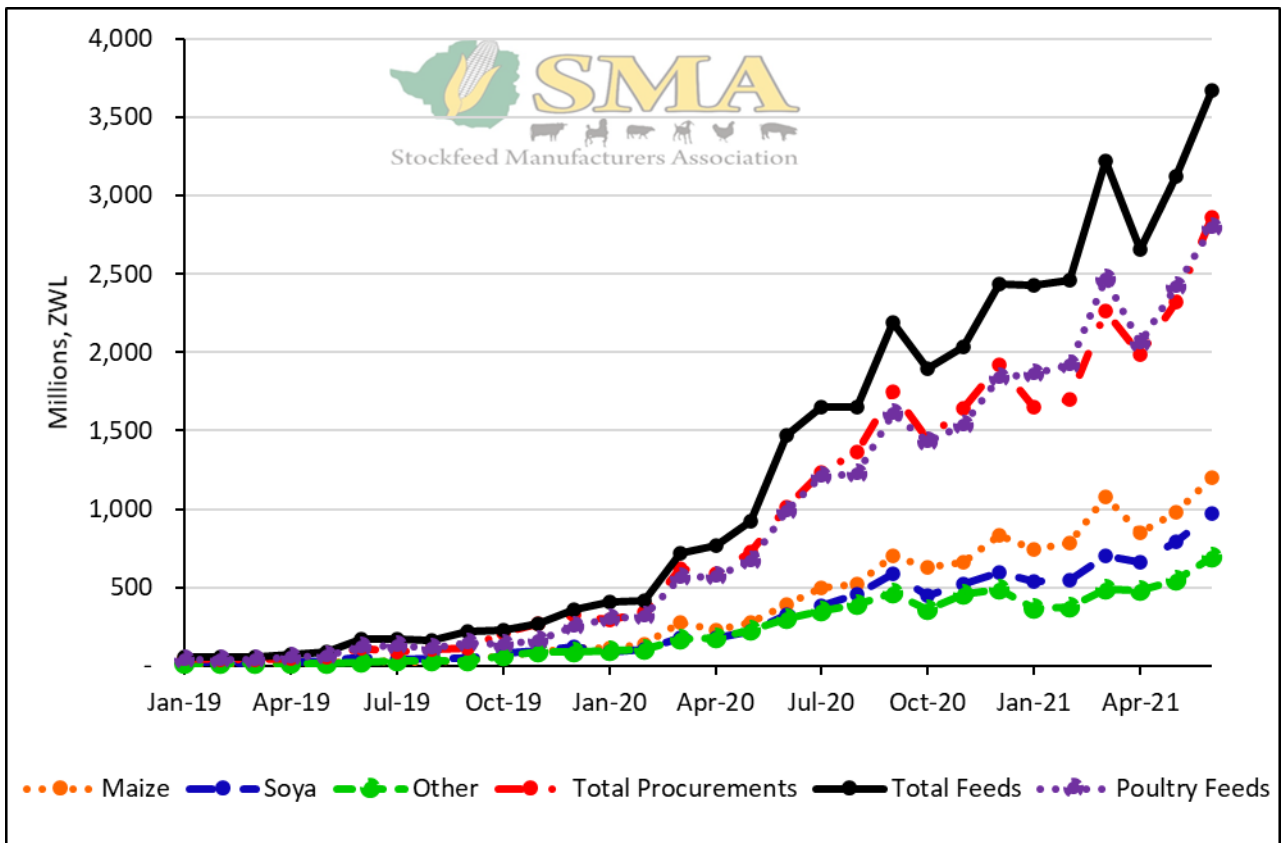
Second Quarter Monthly Average Cost of Raws Procured and Feeds Produced in USD Terms



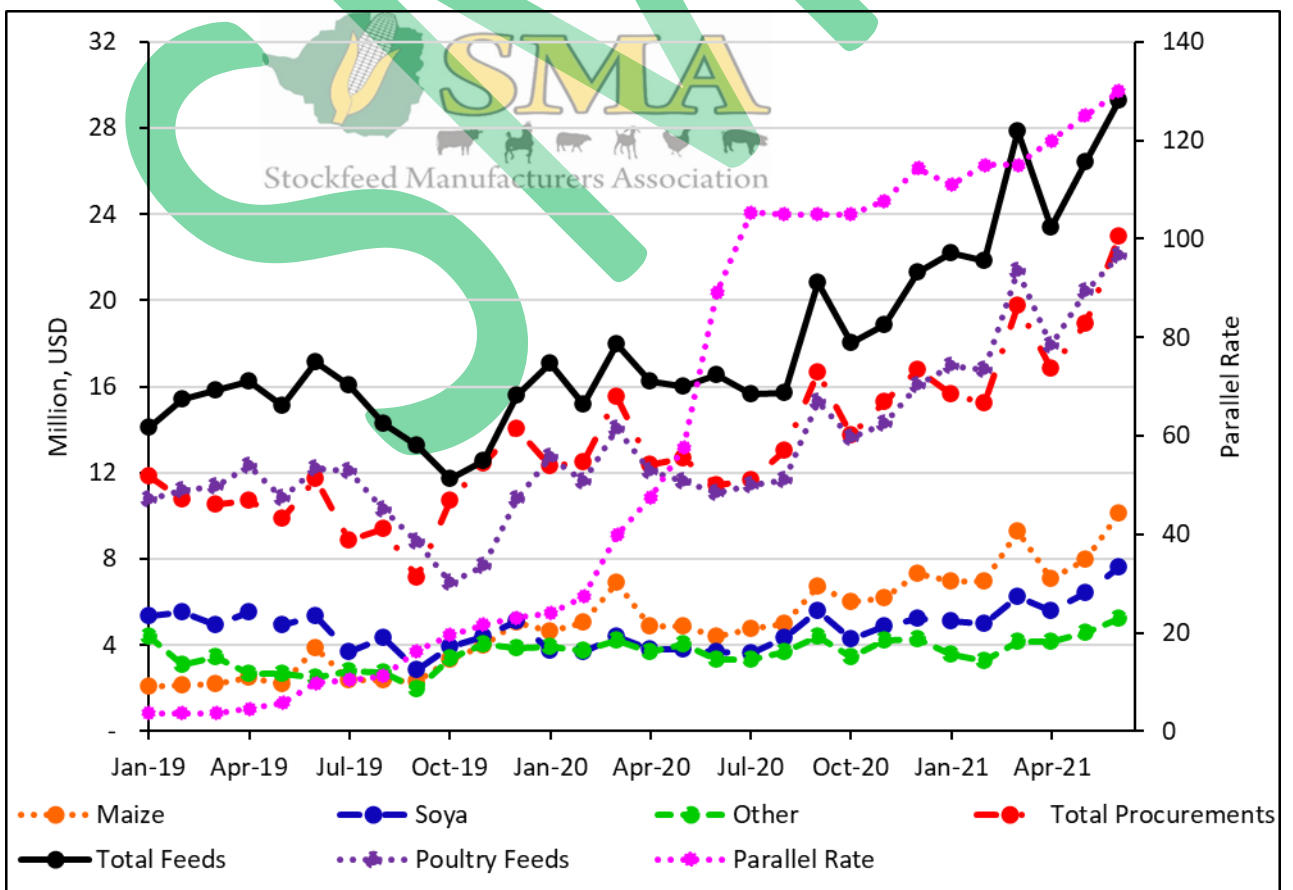
Monthly Tonnages of Raws Procured and Feeds Produced



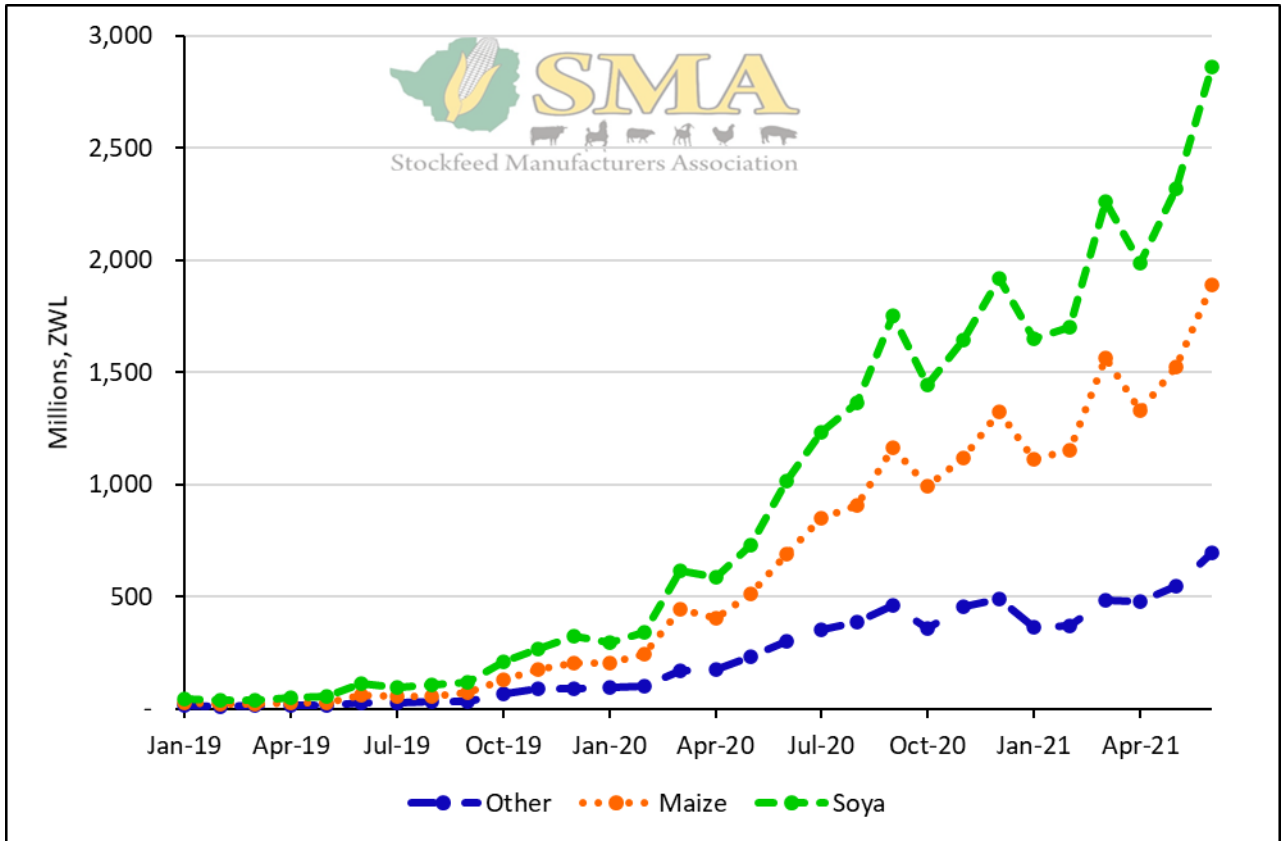
Average Monthly Tonnages of Raws Procured and Feeds Produced



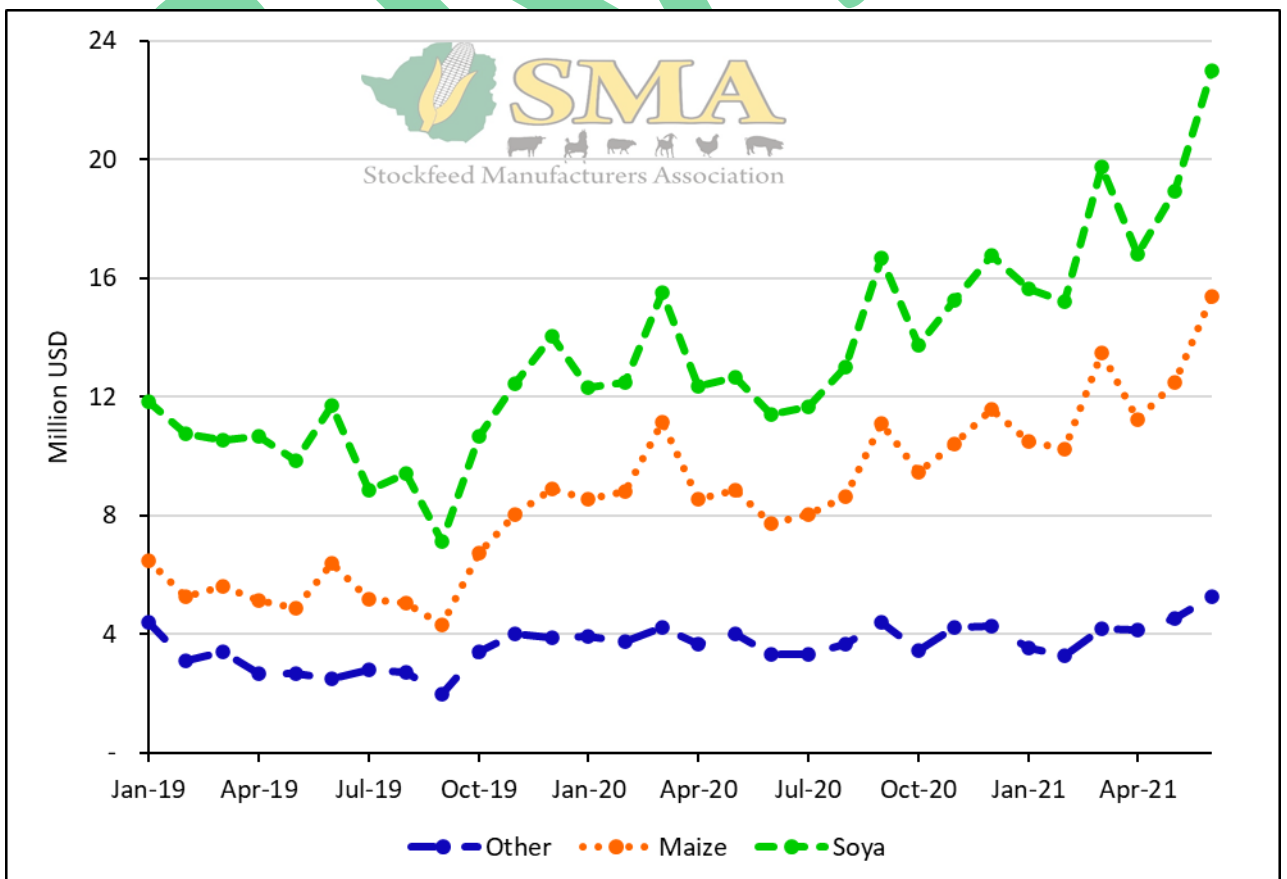
Values of Raws Procured and Feeds Produced



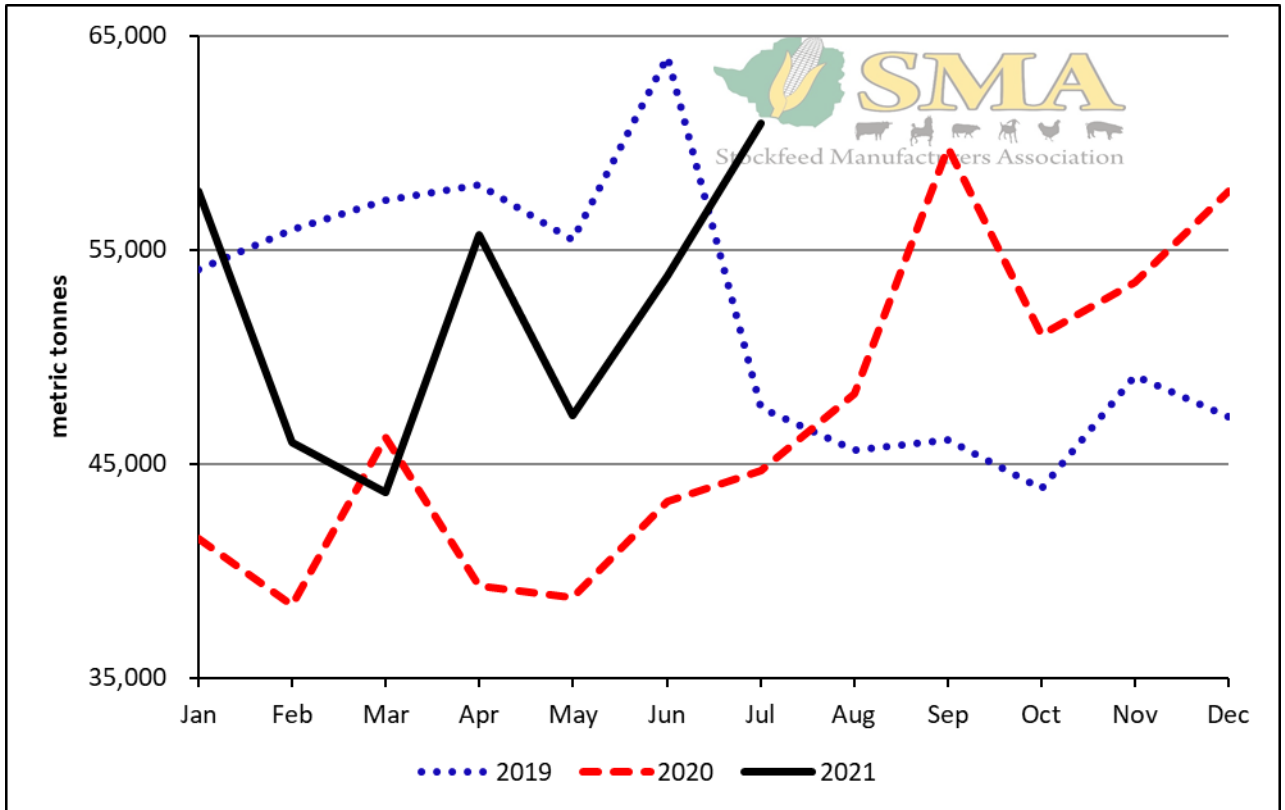
Value of Raws Procured and Feeds Manufactured Relative to the Parallel Rate



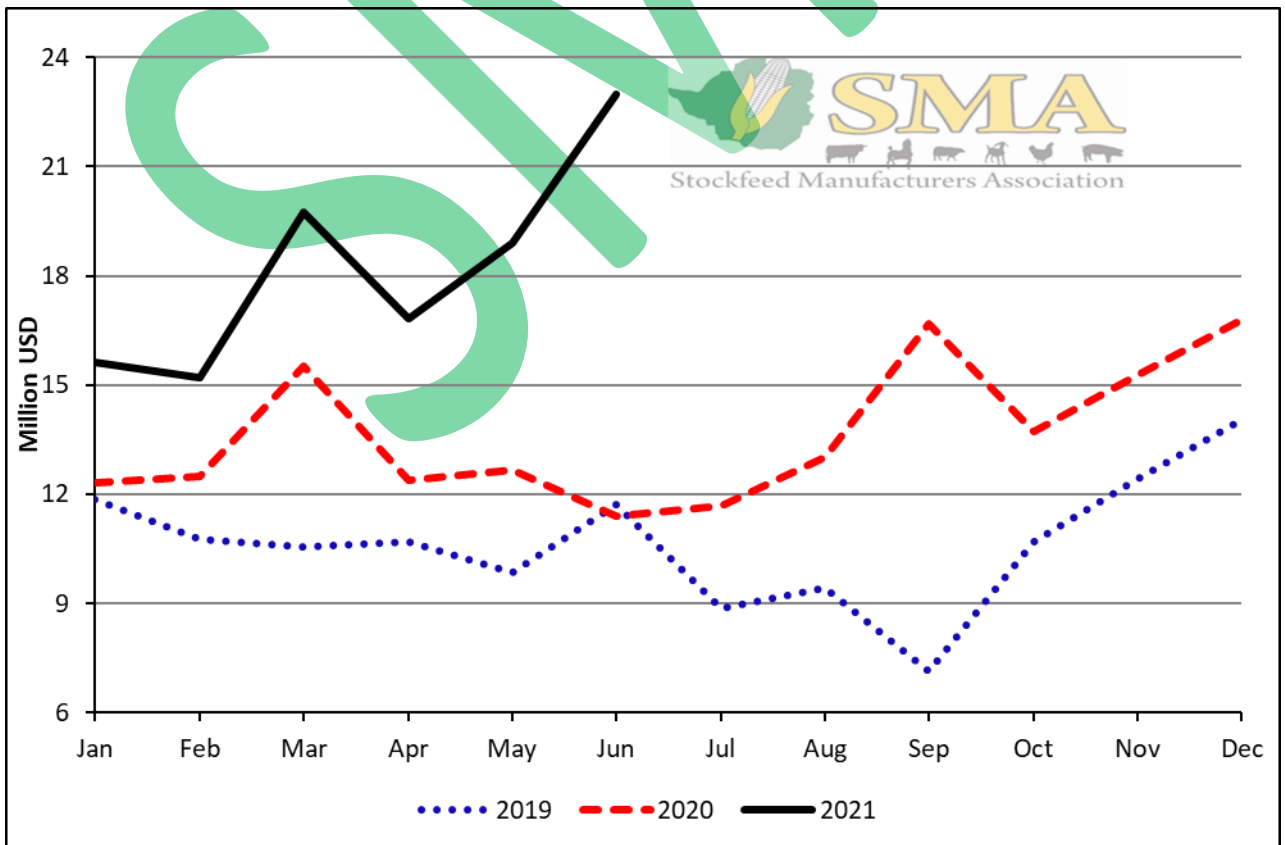
Cumulative Value of Raws Procured



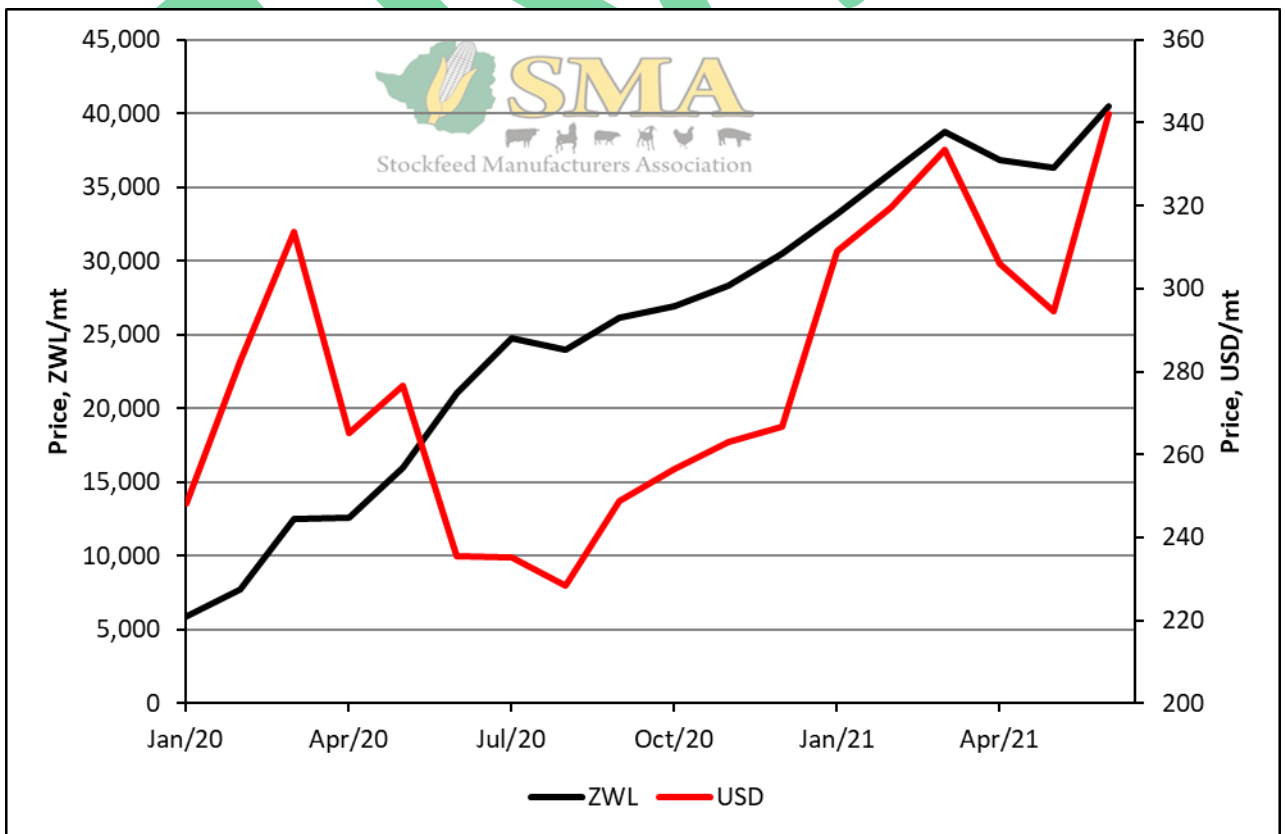
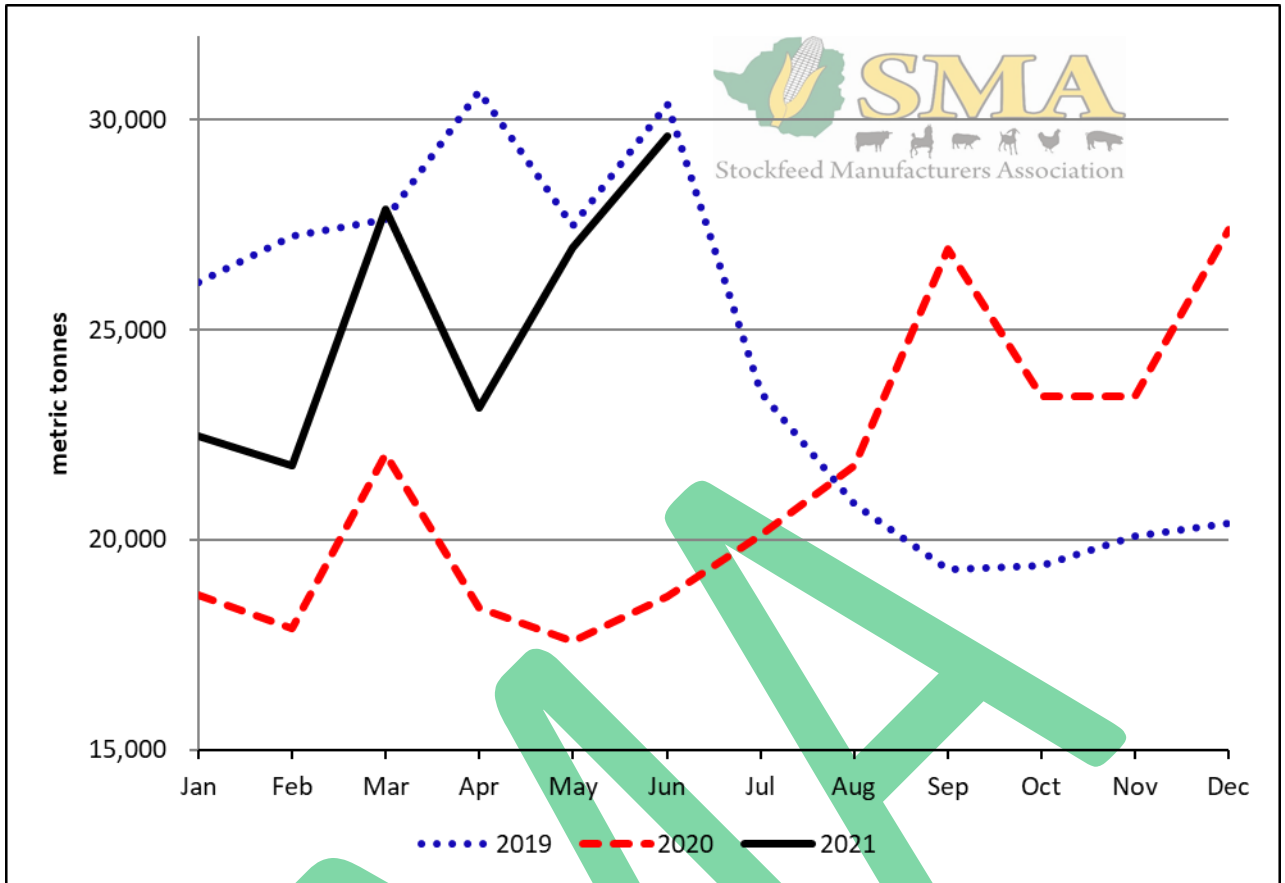
Cumulative Value of Raws Procured in USD Terms



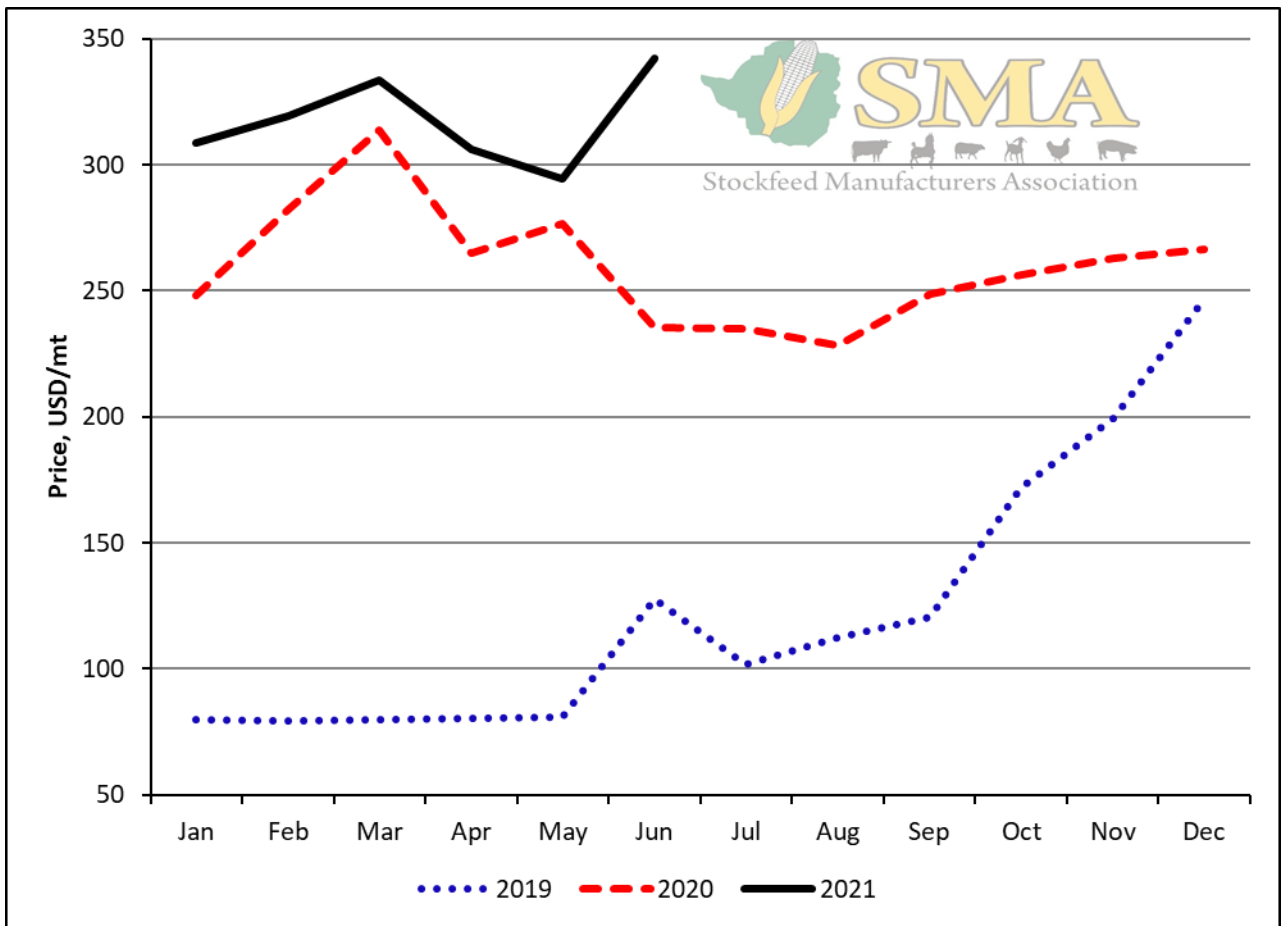
Tonnage Raws Procured



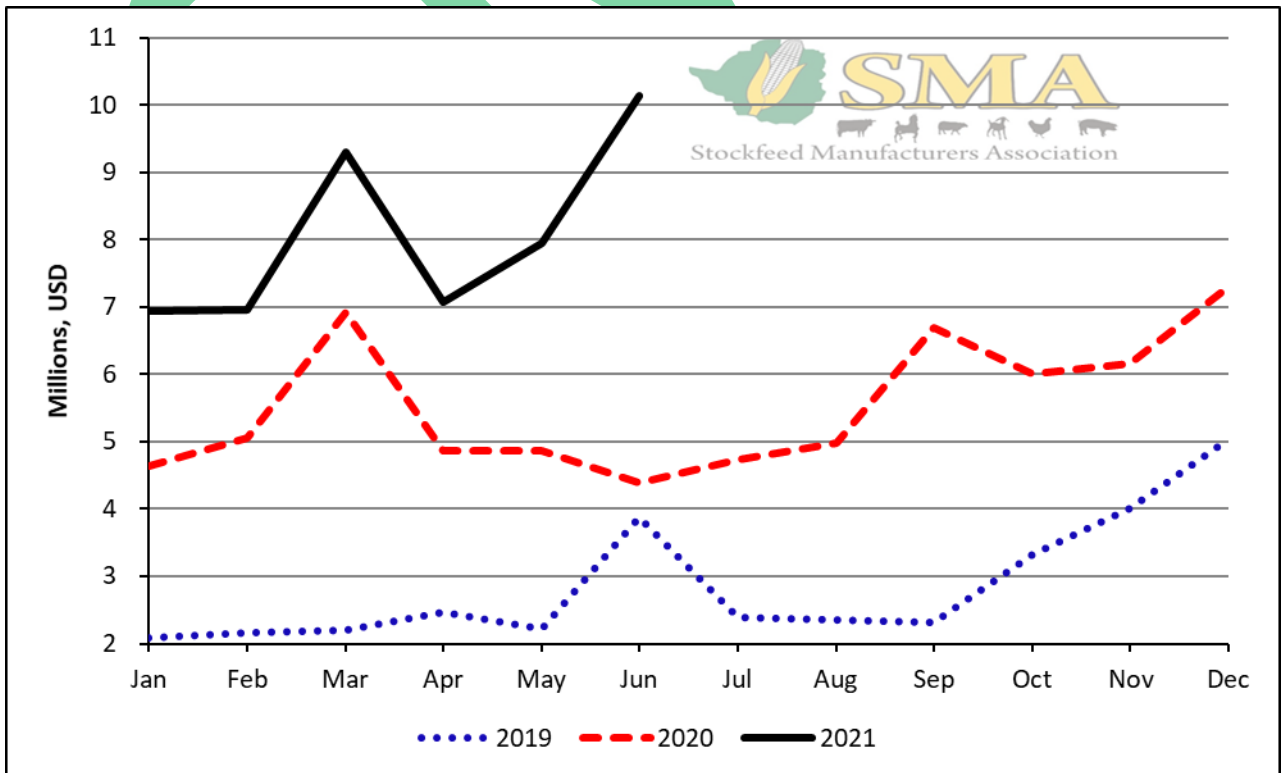
Value of Raws Procured in USD Terms



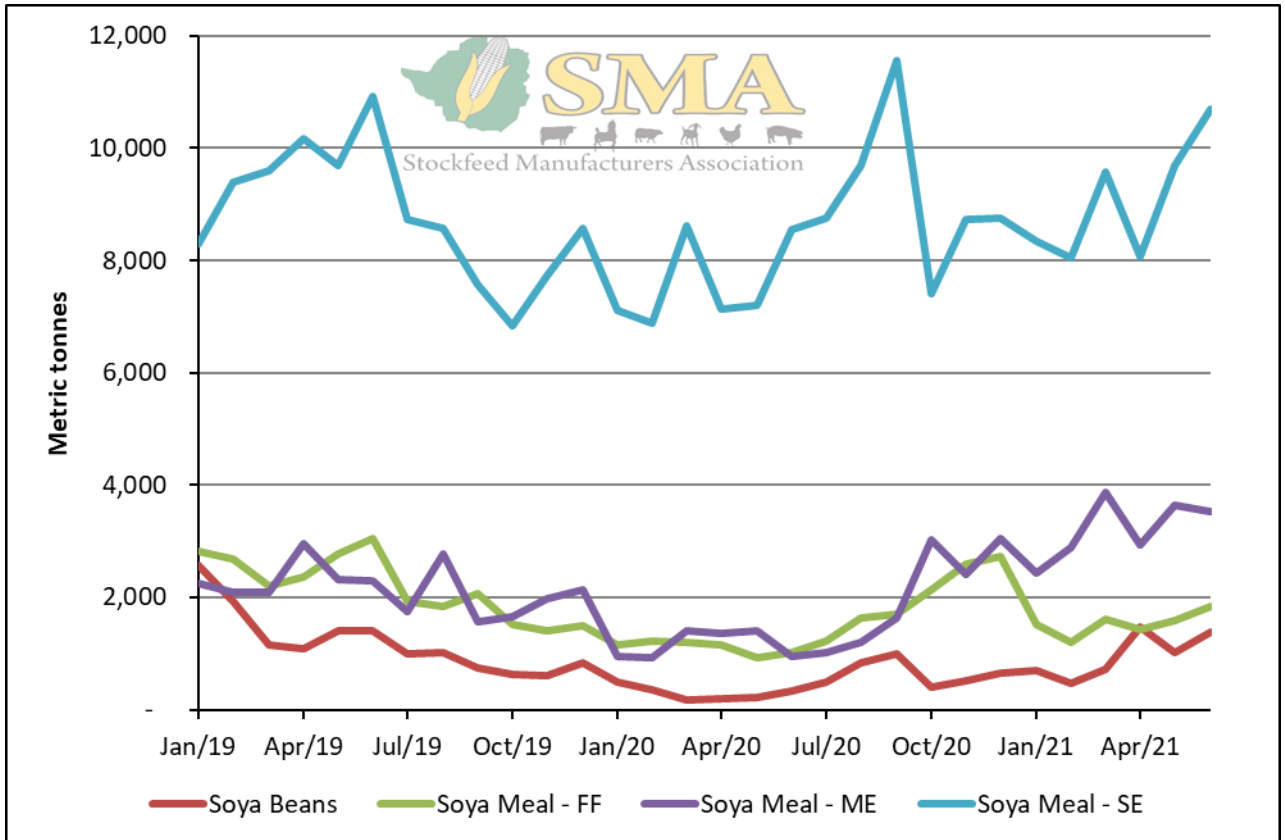
Maize Price



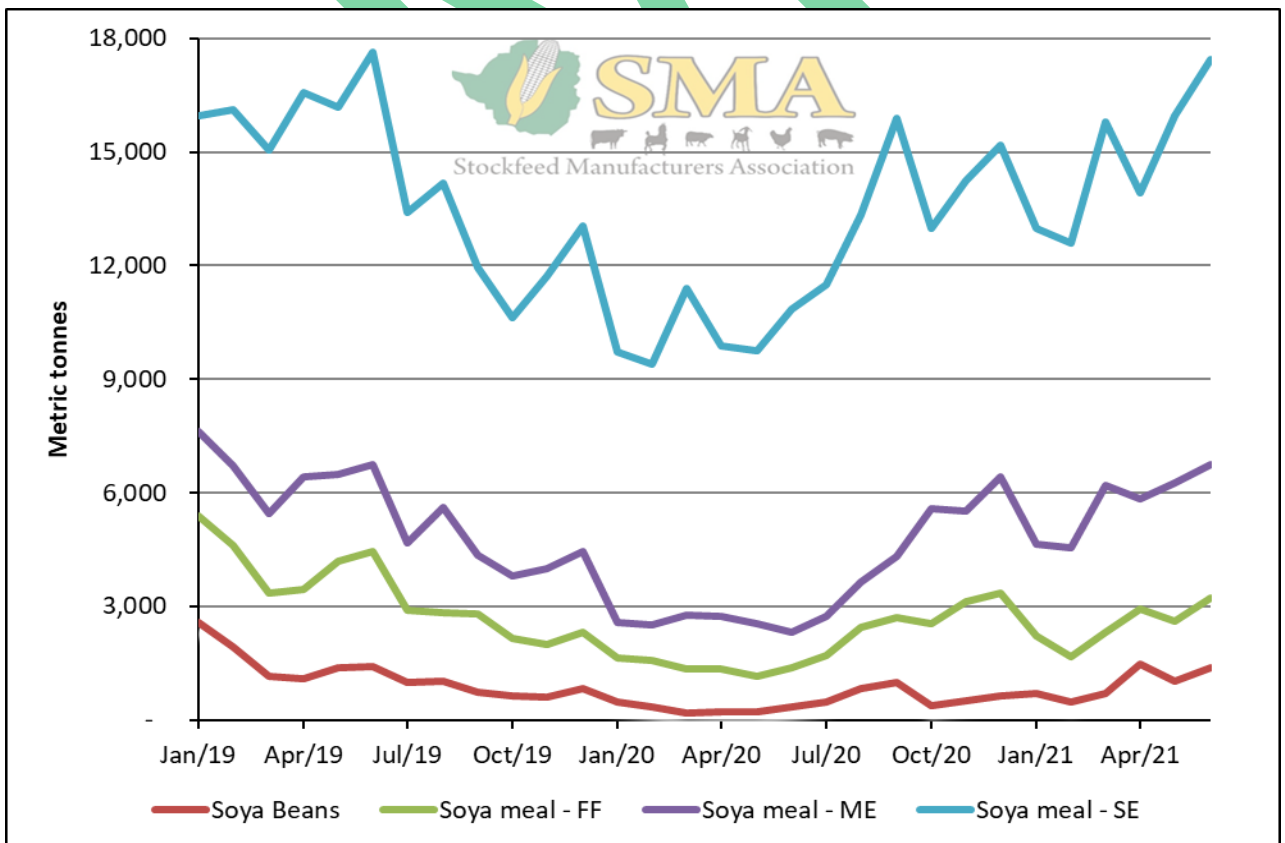
Maize Price Relative in USD Terms



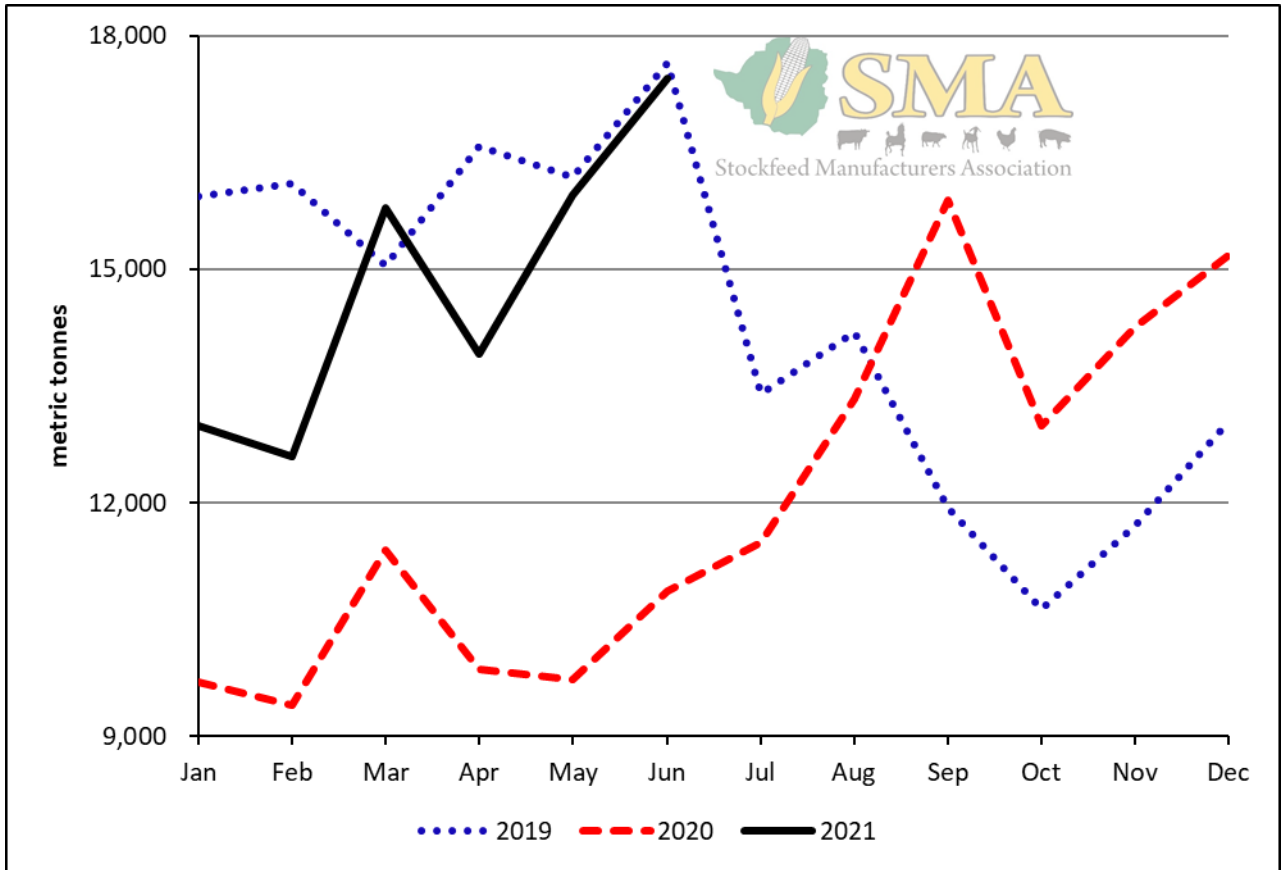
Value of Maize Procurements in USD Terms



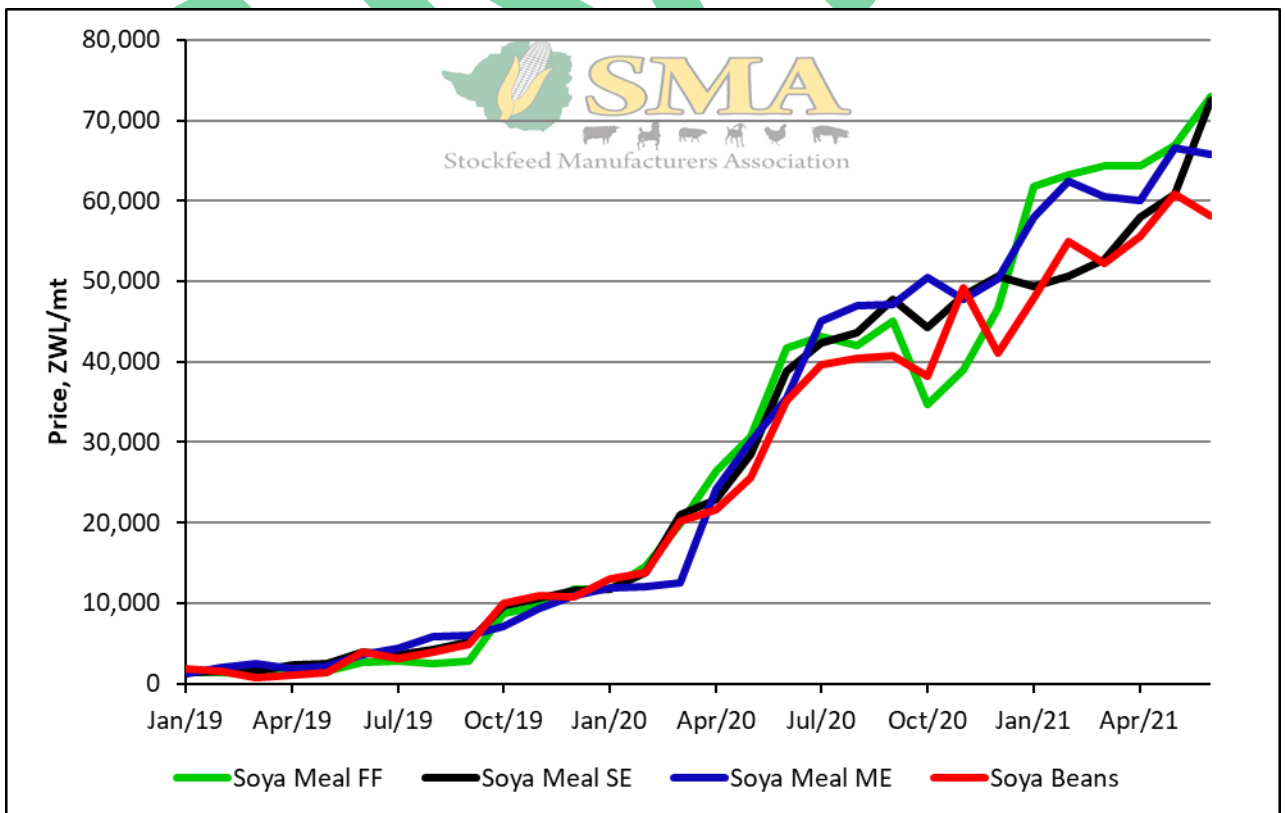
Tonnage Soya Products Procured Expressed as a Bean Equivalent



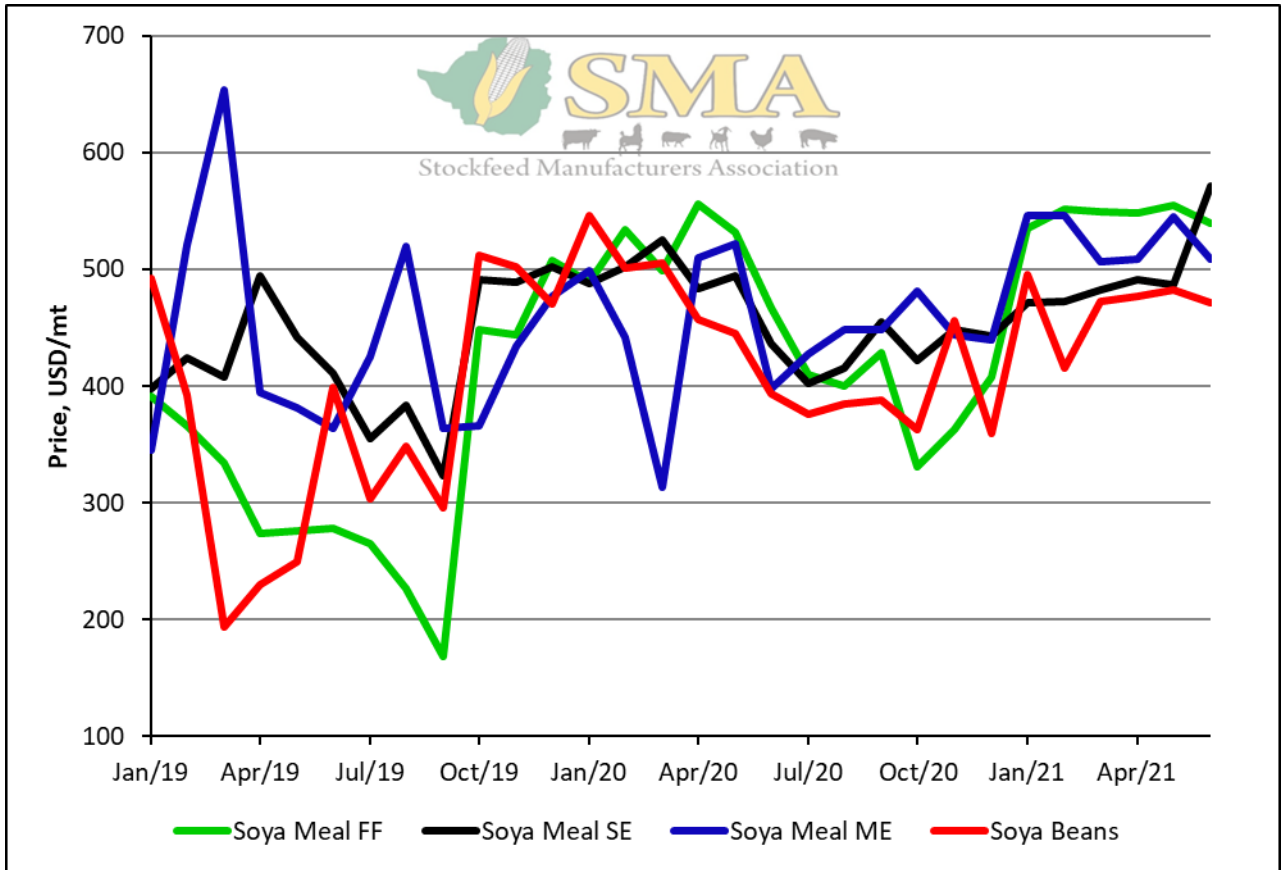
Cumulative Tonnage Soya Products Procured Expressed in Bean Equivalent



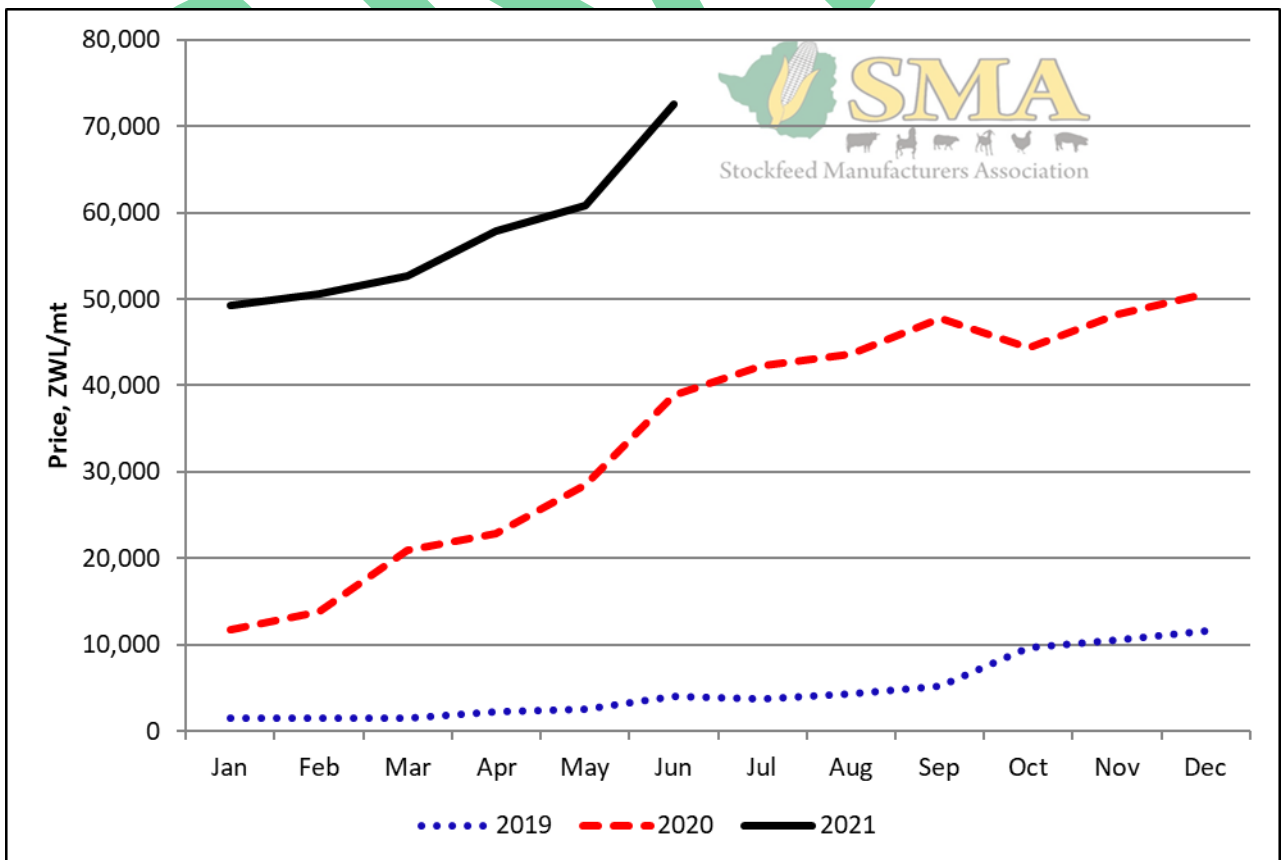
Tonnage Soya Bean Products Procured Expressed as a Bean Equivalent



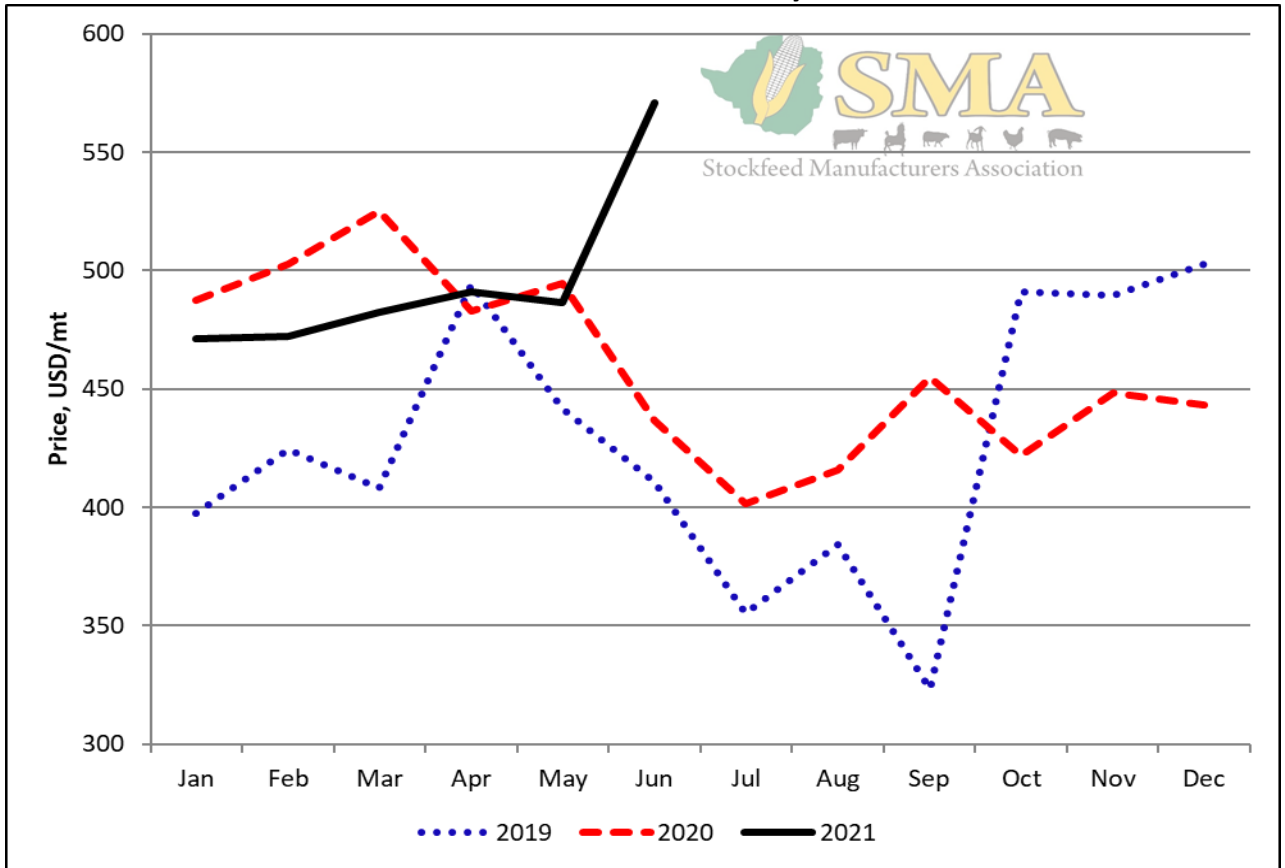
Prices of Soya Products



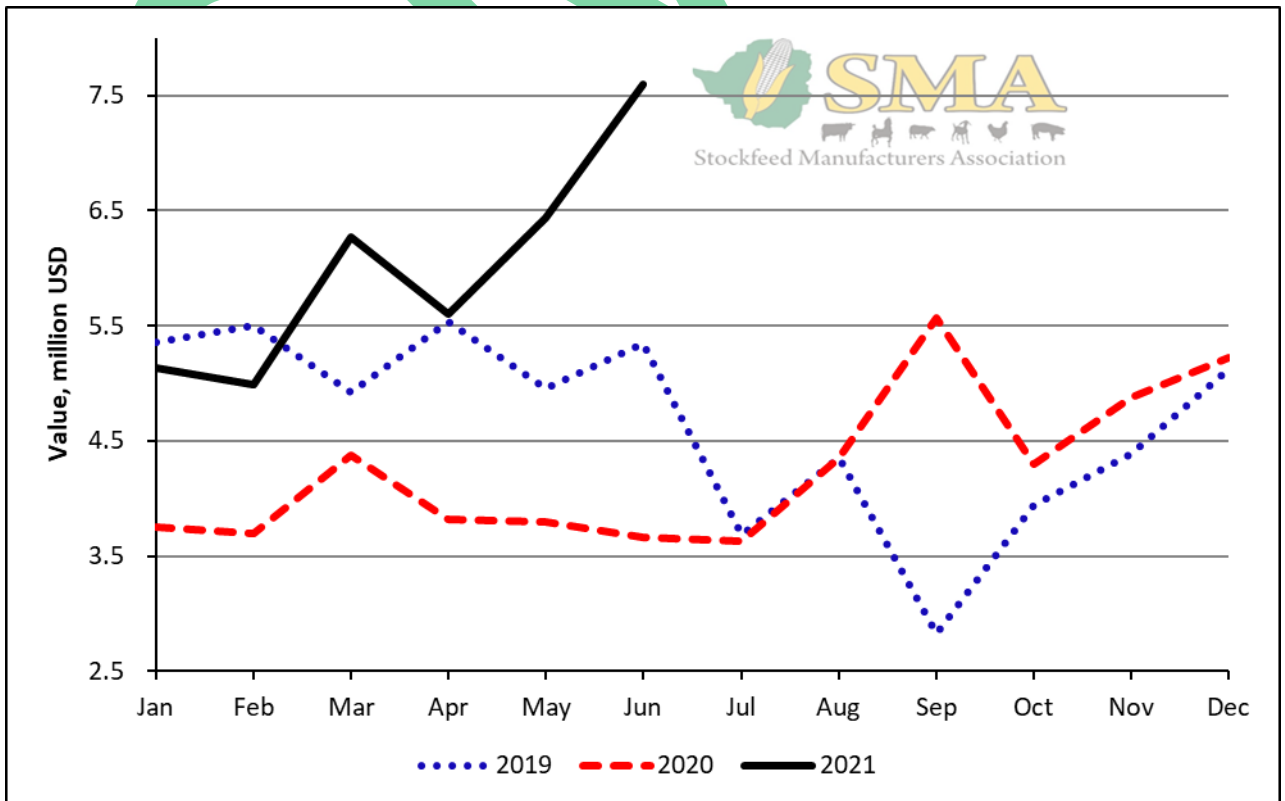
Prices of Soya Products in USD Terms



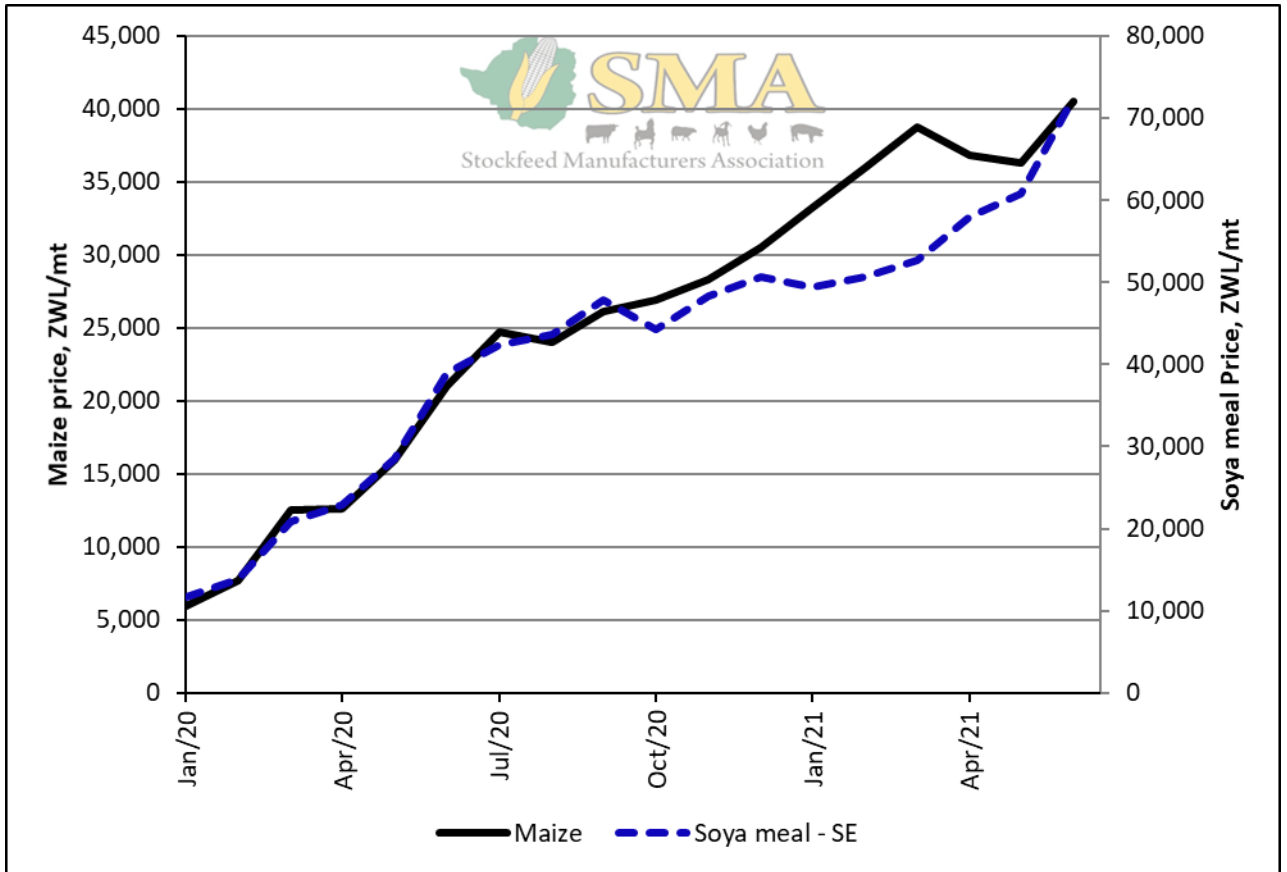
Price of Solvent Extracted Soya Meal



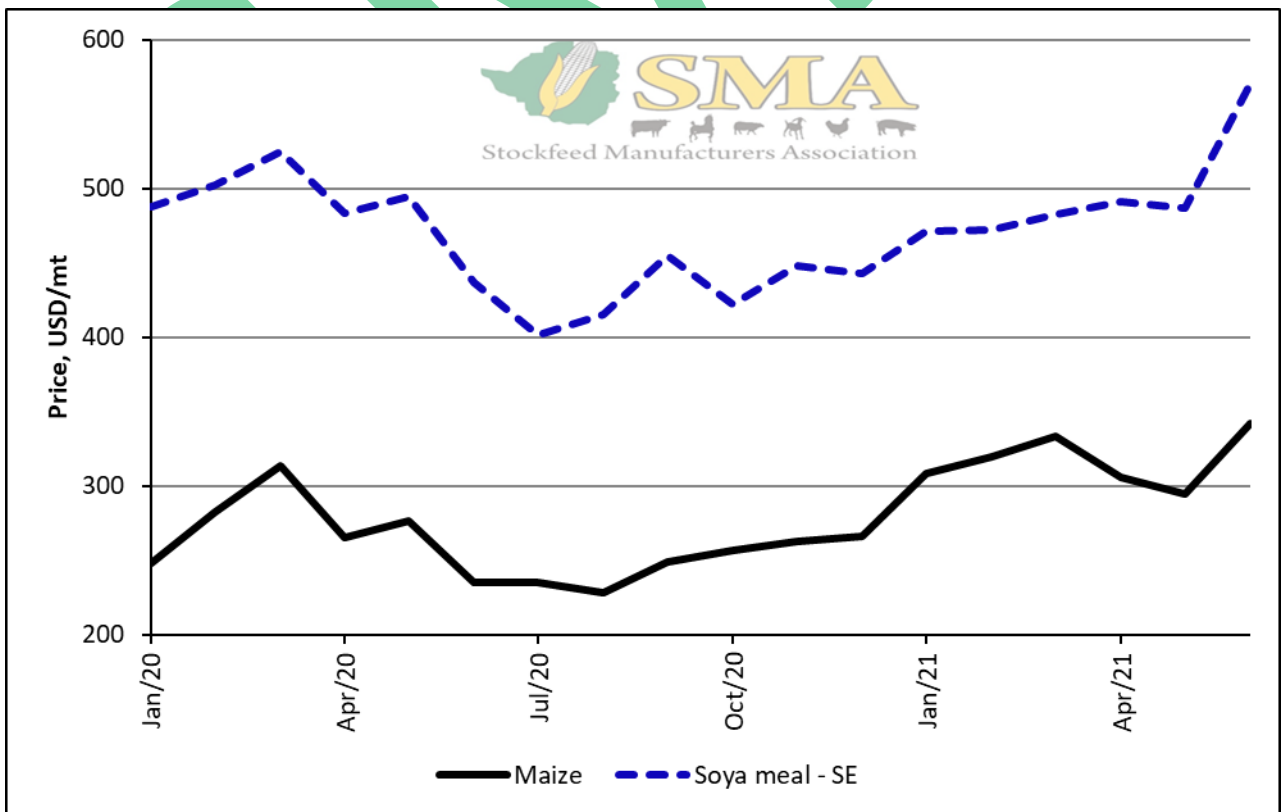
Price of Solvent Extracted Soya Meal in USD Terms



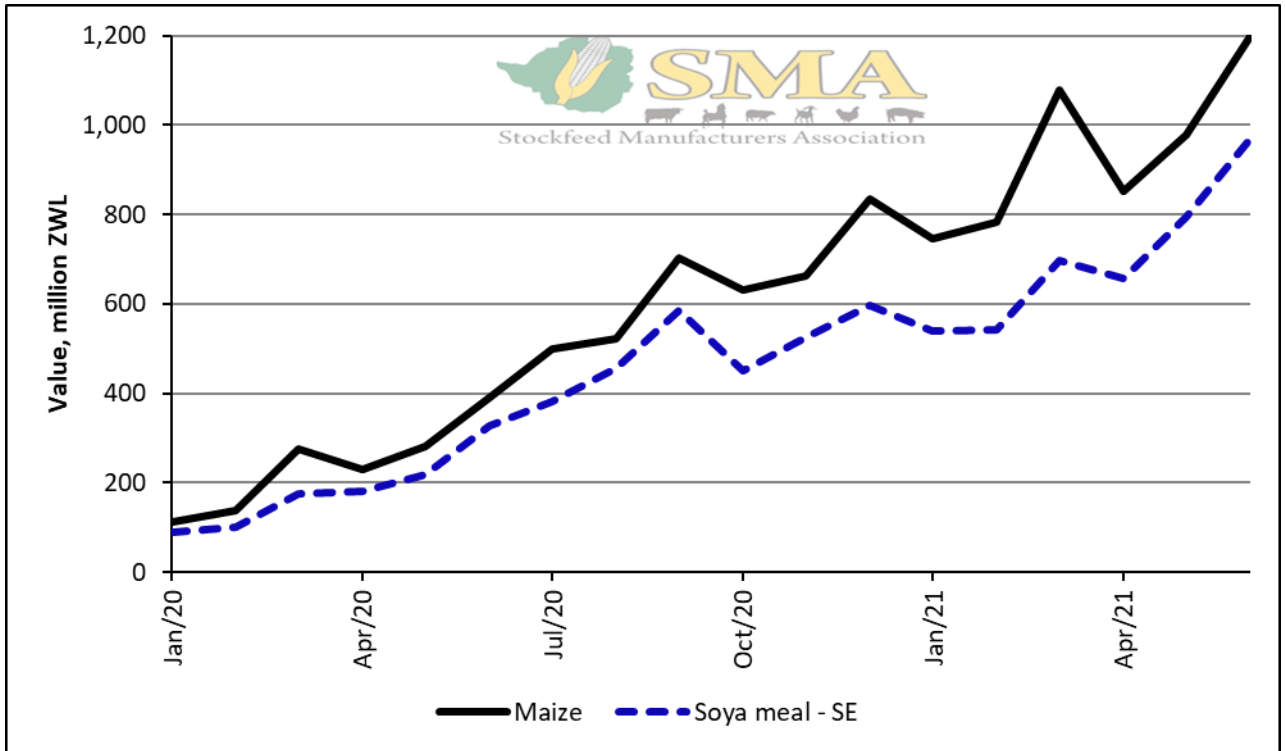
Value of Soya Products Procured in USD Terms



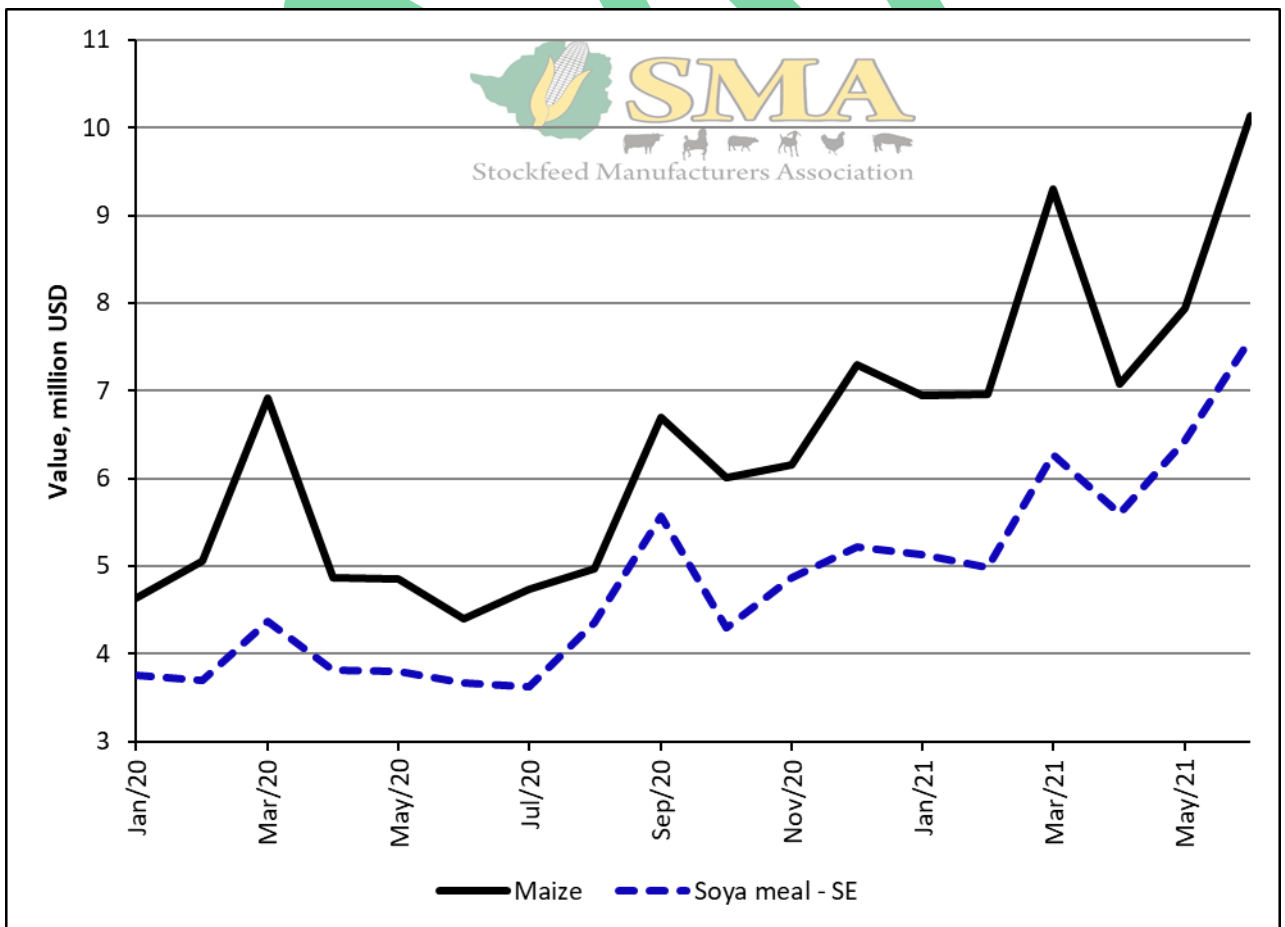
Price of Maize and Solvent Extracted Soya Meal



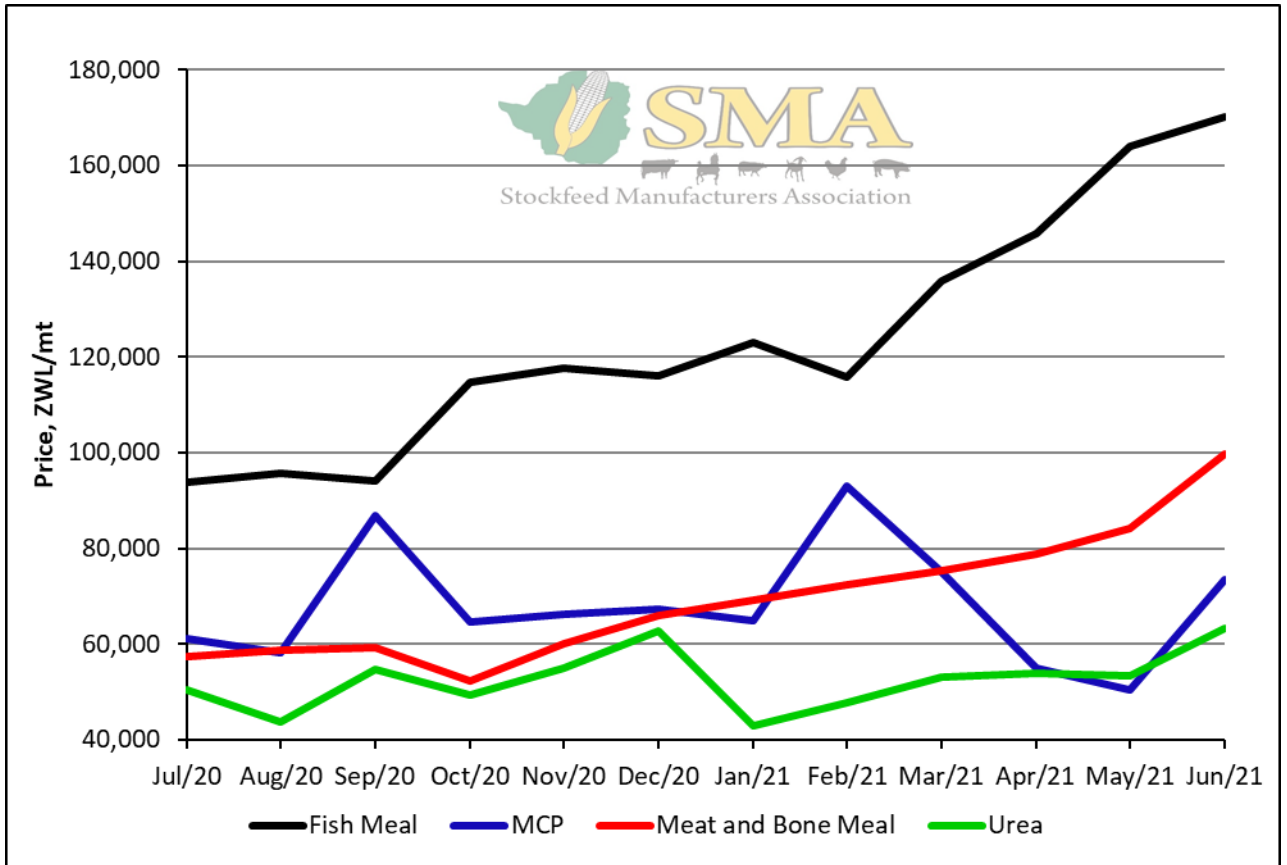
Price of Maize and Solvent Extracted Soya Meal in USD Terms



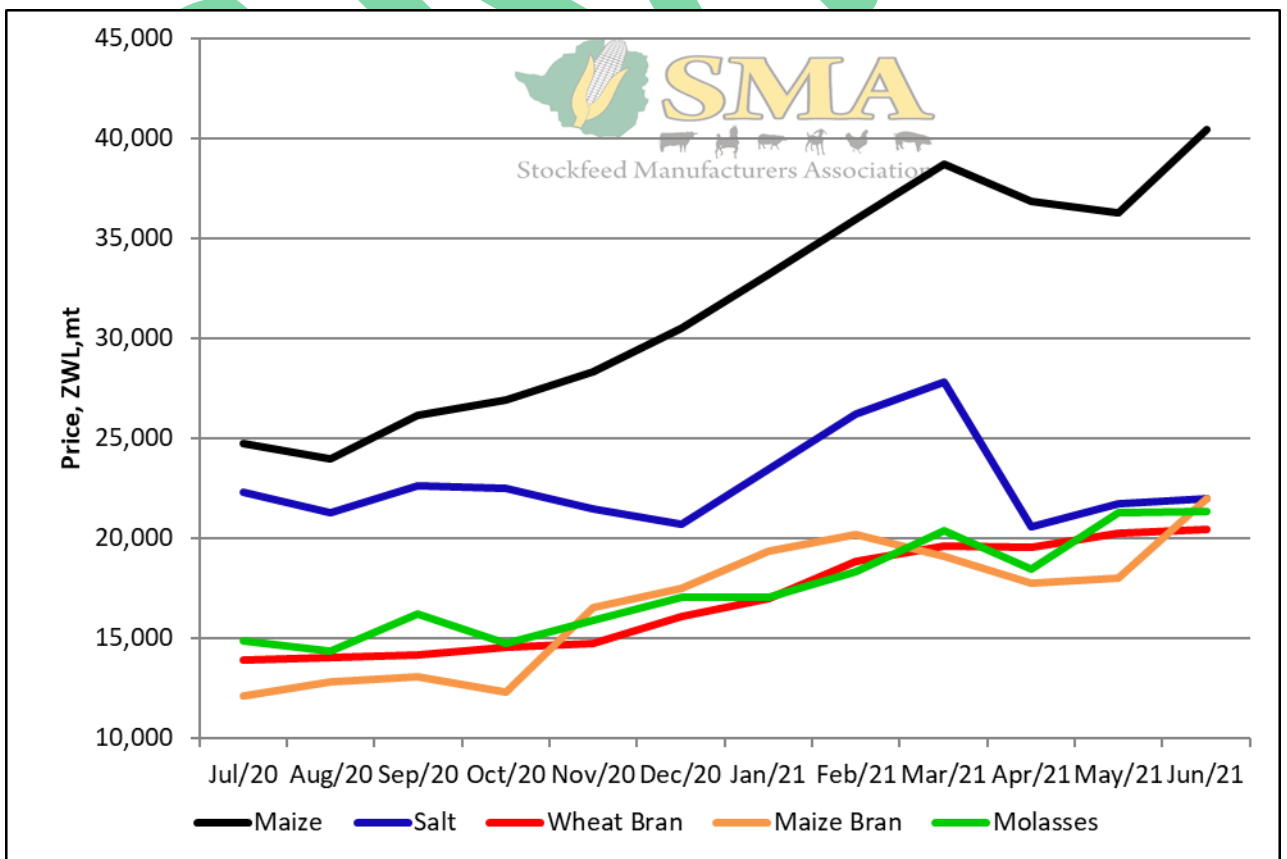
Value of Maize and Soya Products Procured



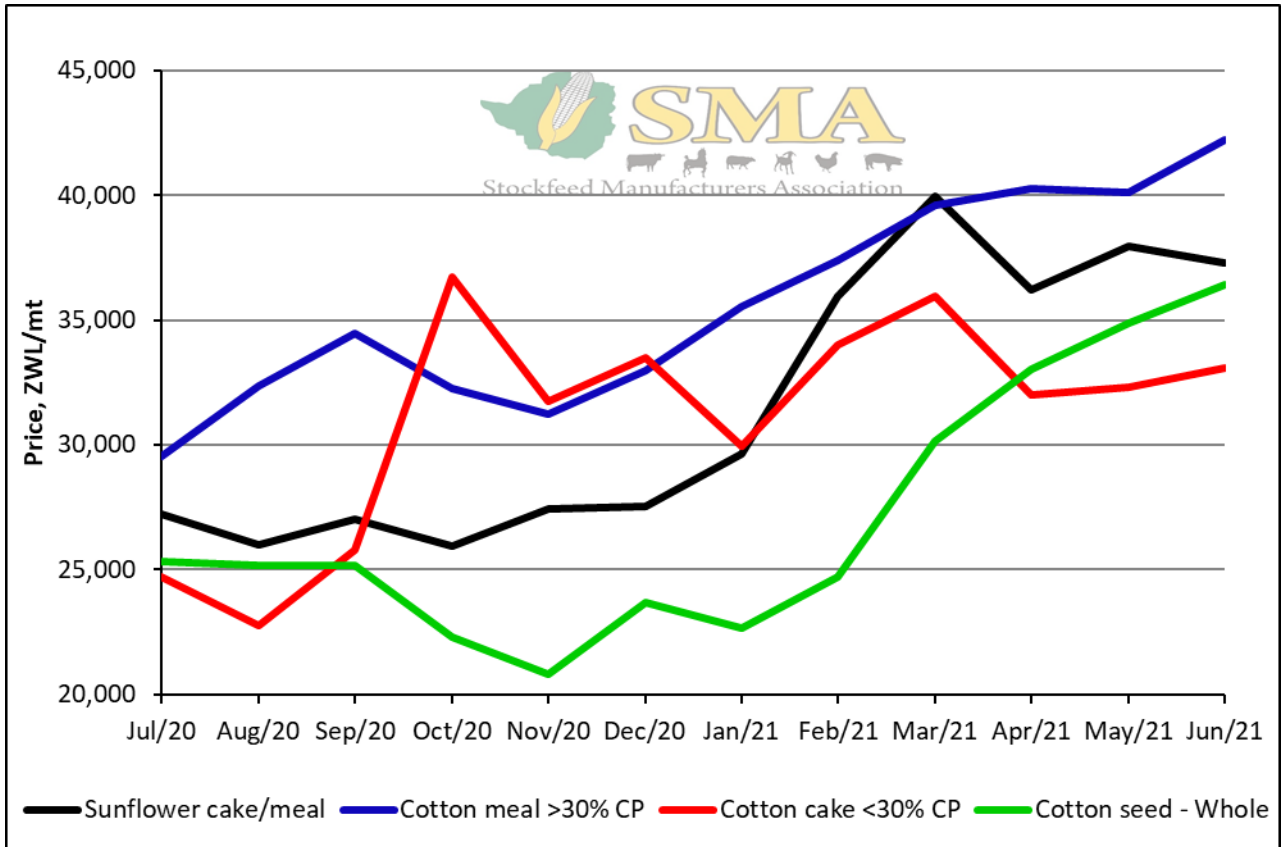
Value of Maize and Soya Products Procured in USD Terms



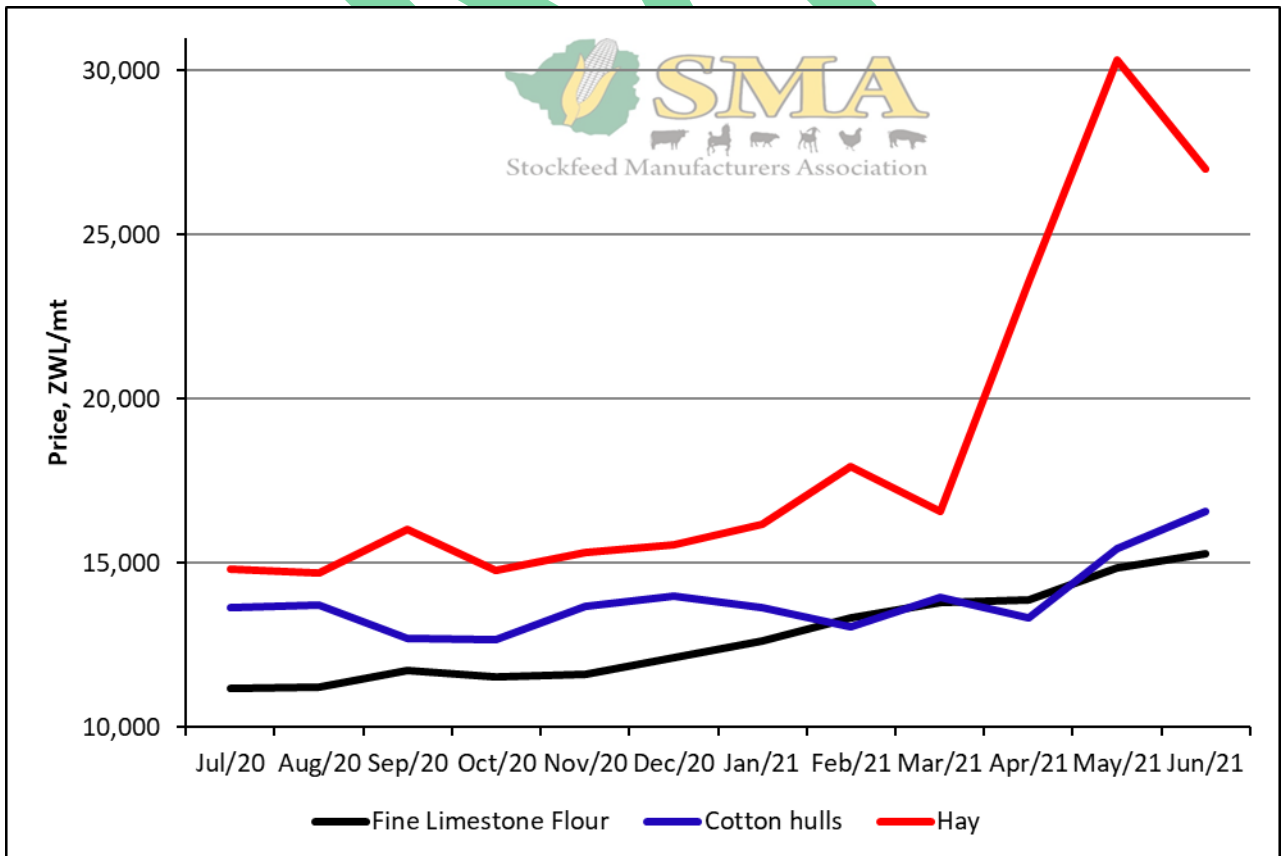
Prices



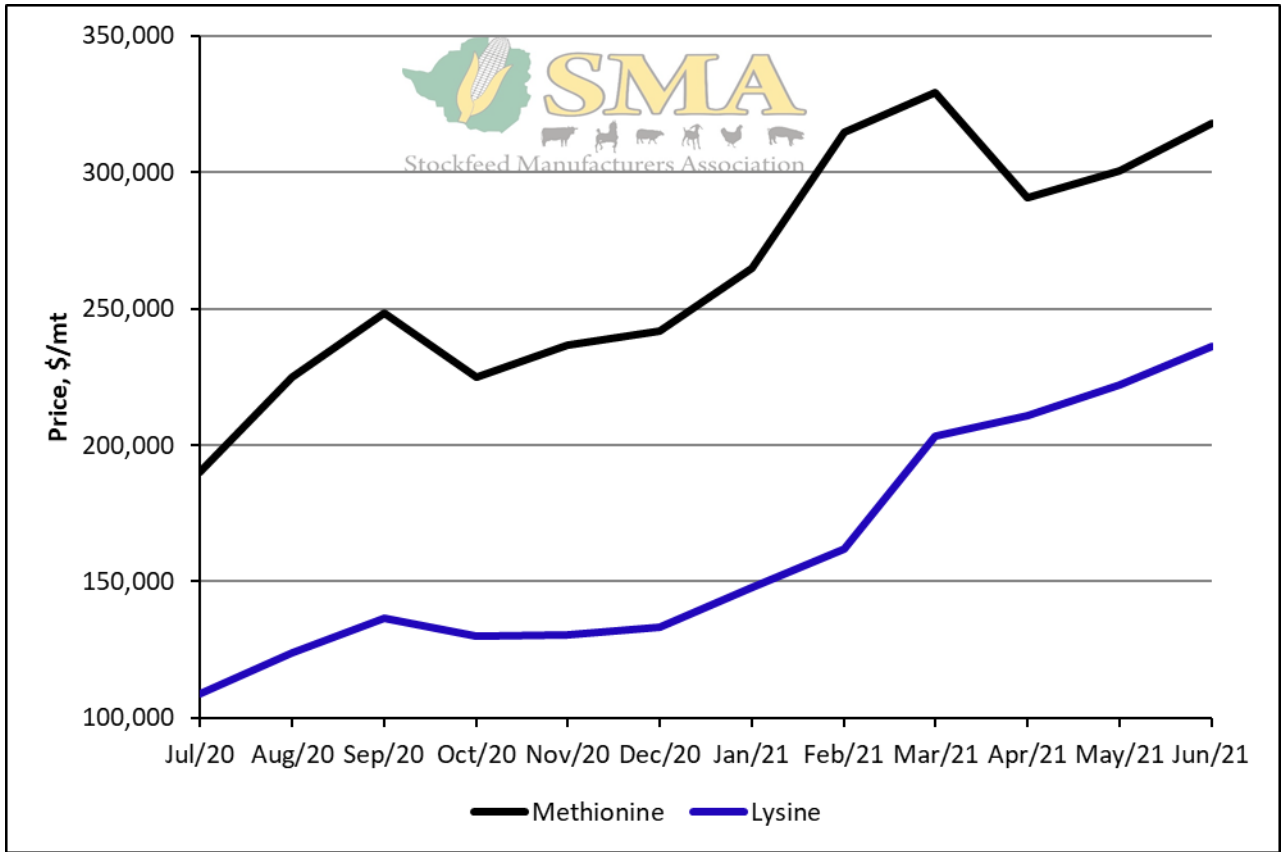
Prices



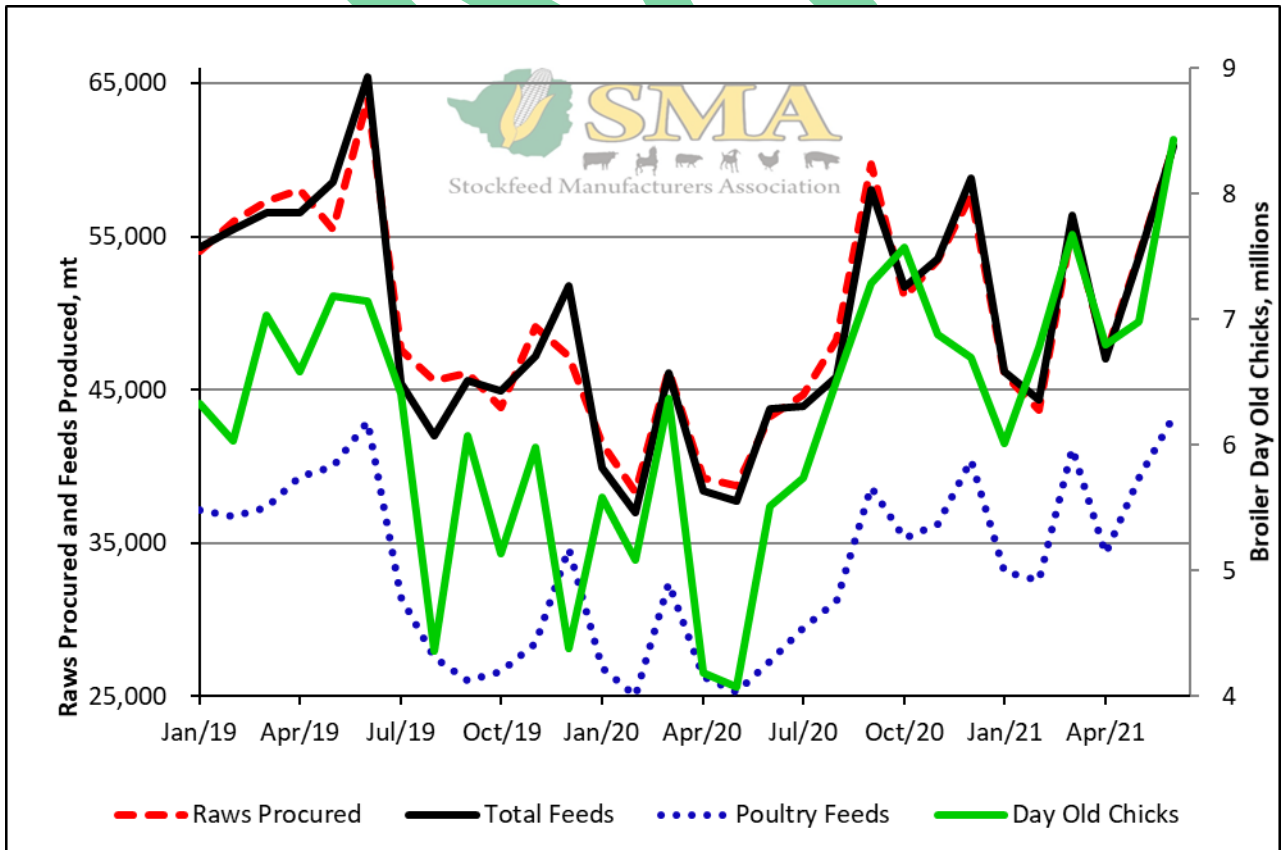
Prices



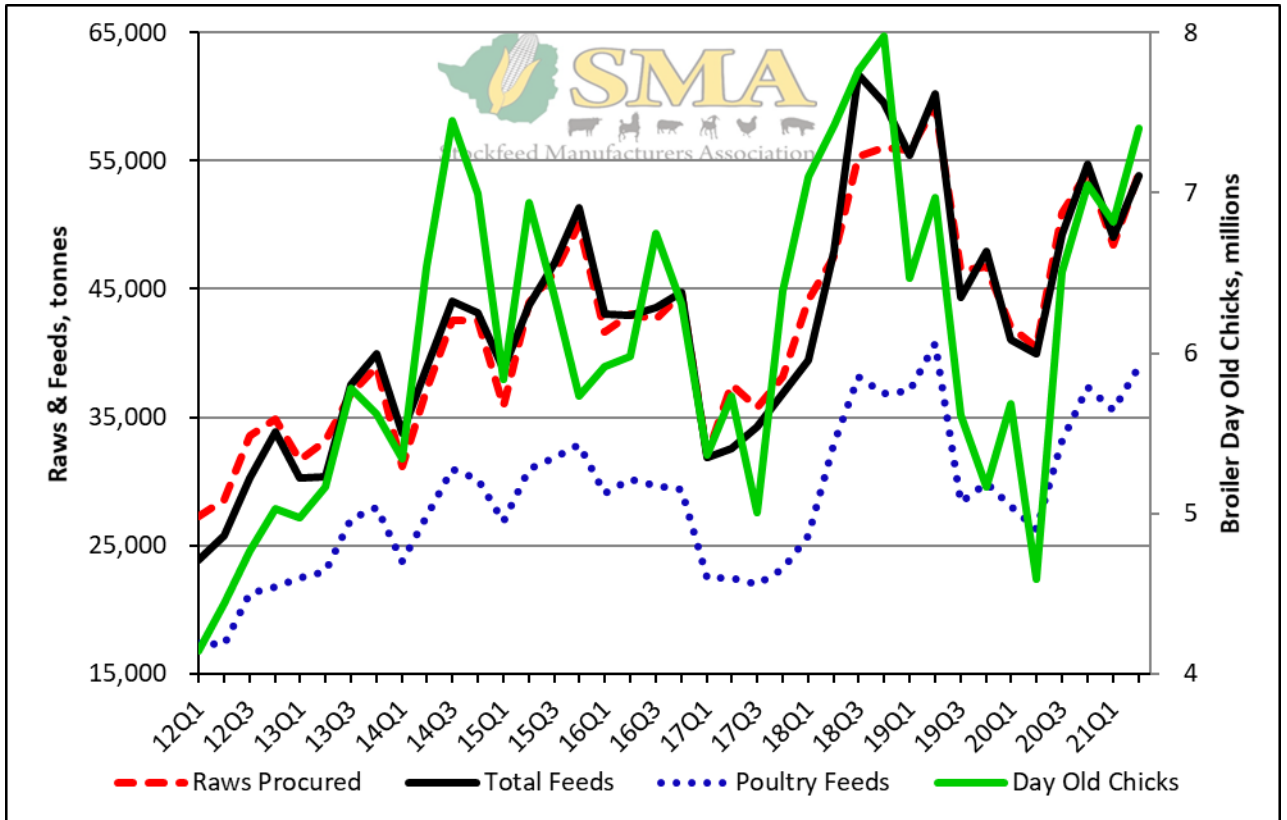
Prices



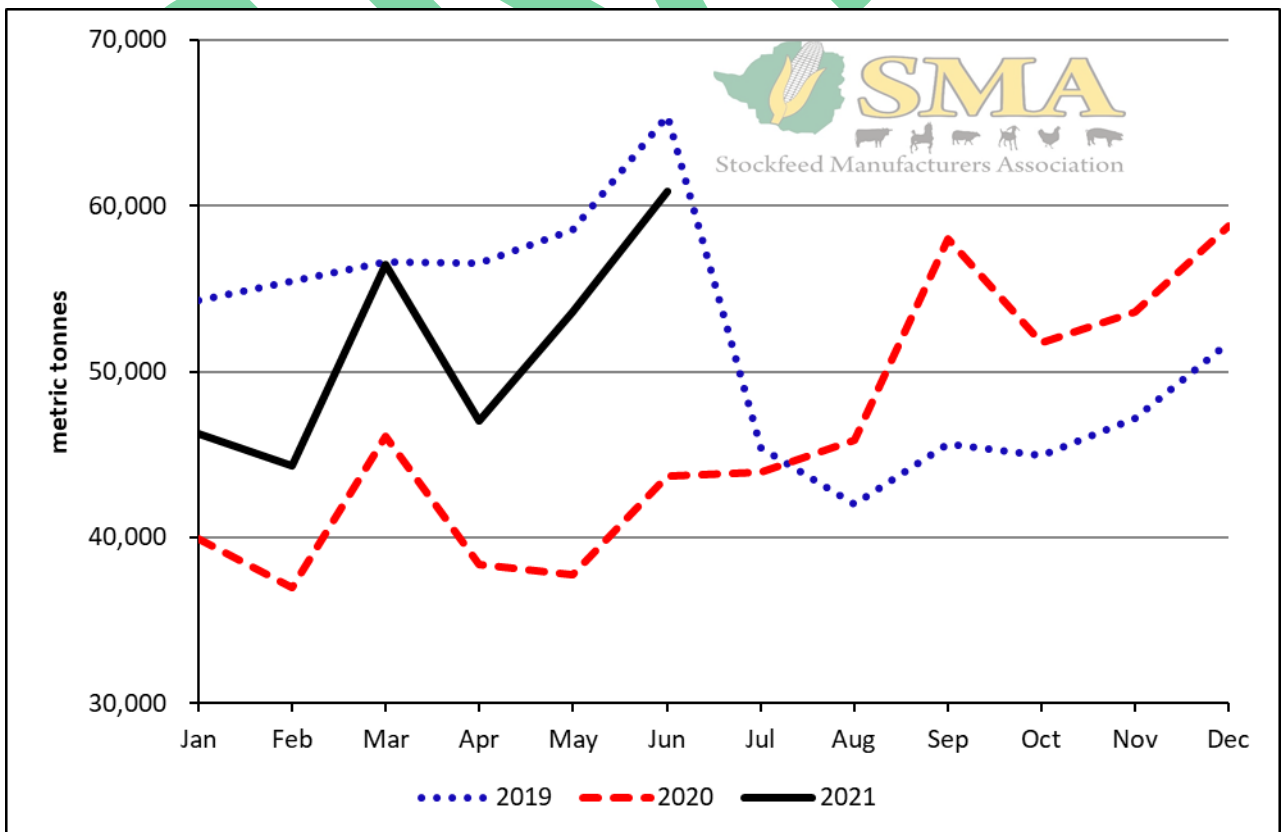
Prices



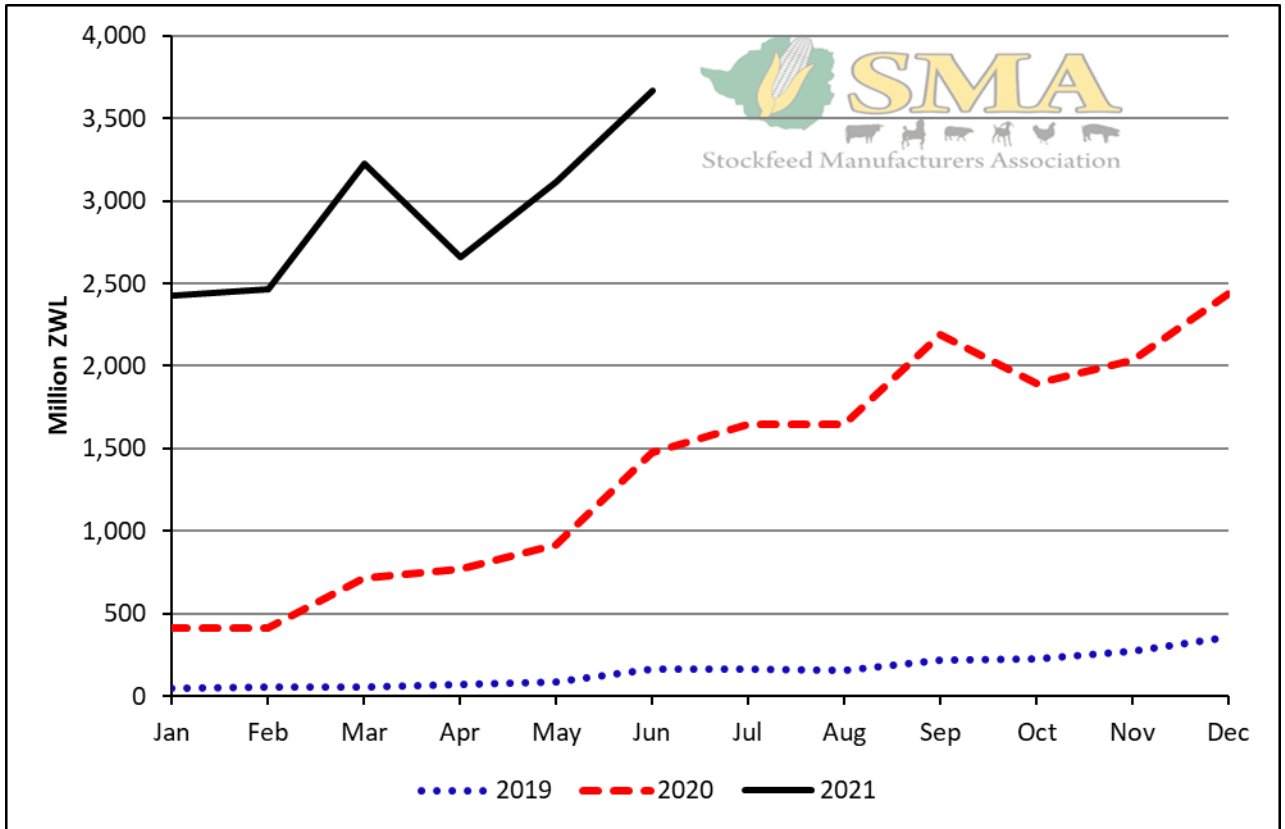
Tonnage Raws Procured and Feeds Produced, and Broiler Day-Old Chicks Produced



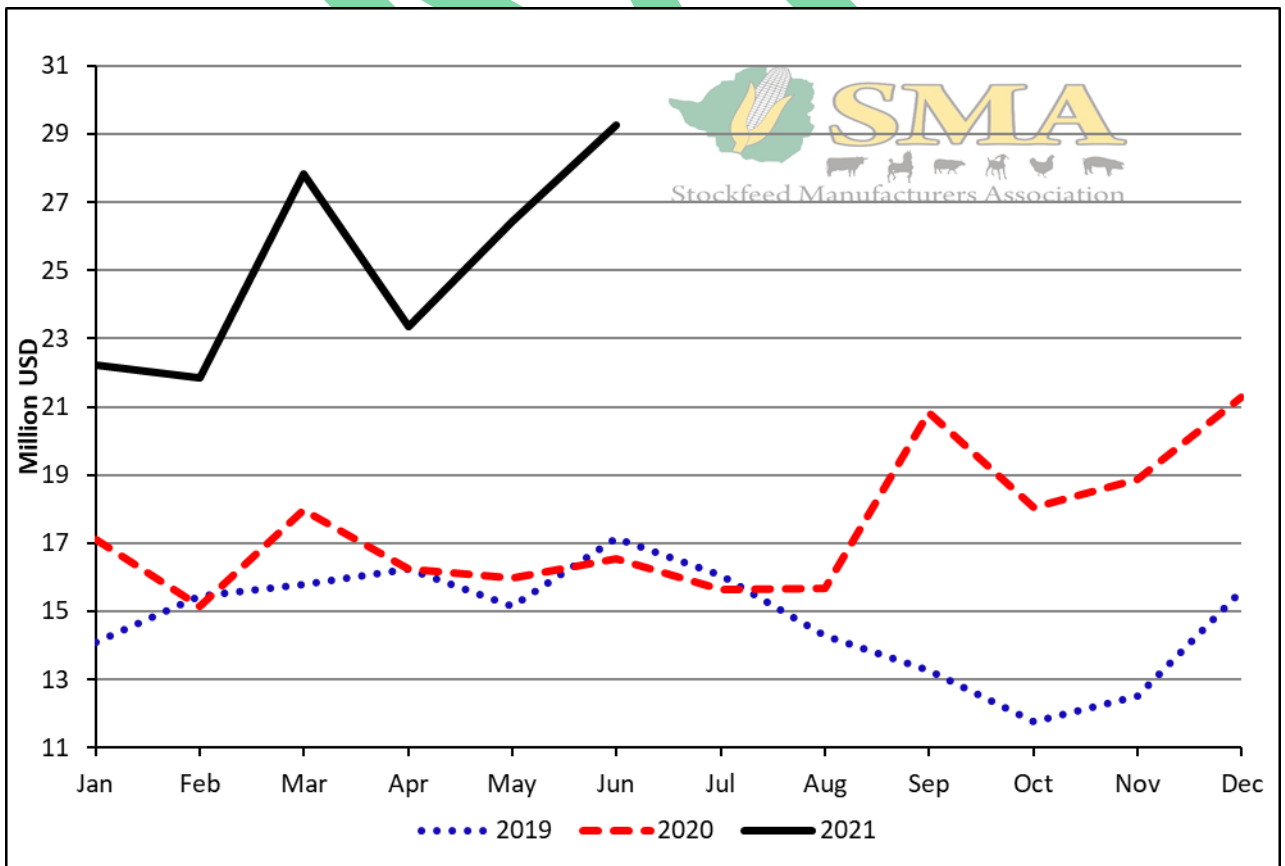
Average Monthly Tonnage Raws Procured and Feeds Produced, and Broiler Day-Old Chicks Produced



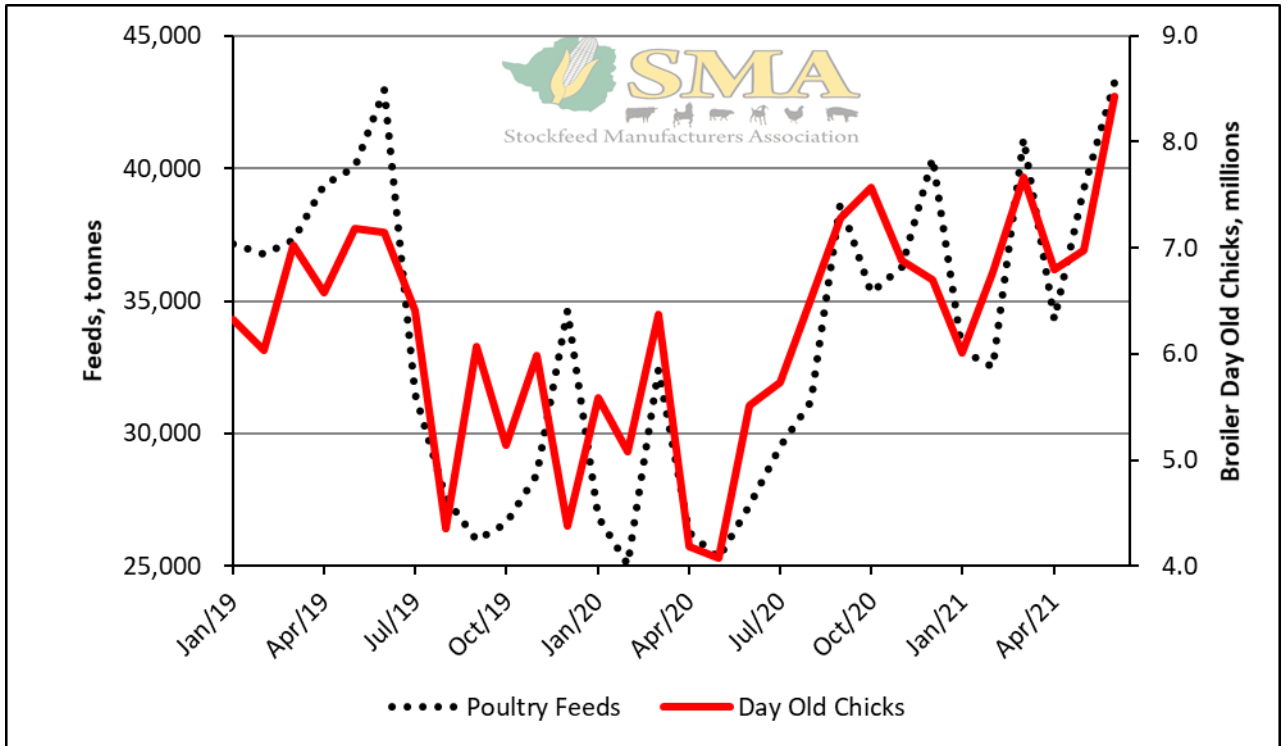
Tonnage of Feeds Produced



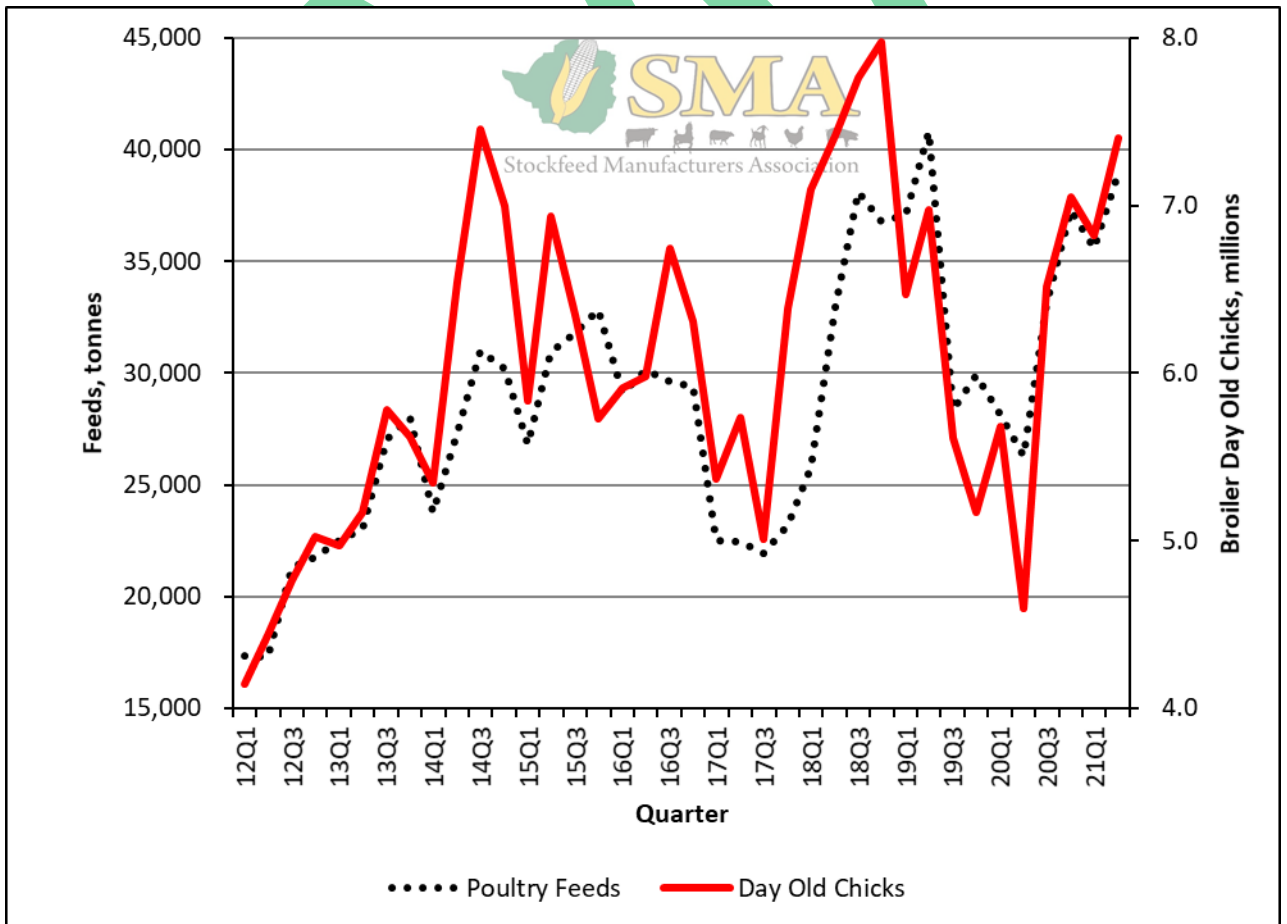
Value of Feeds Produced



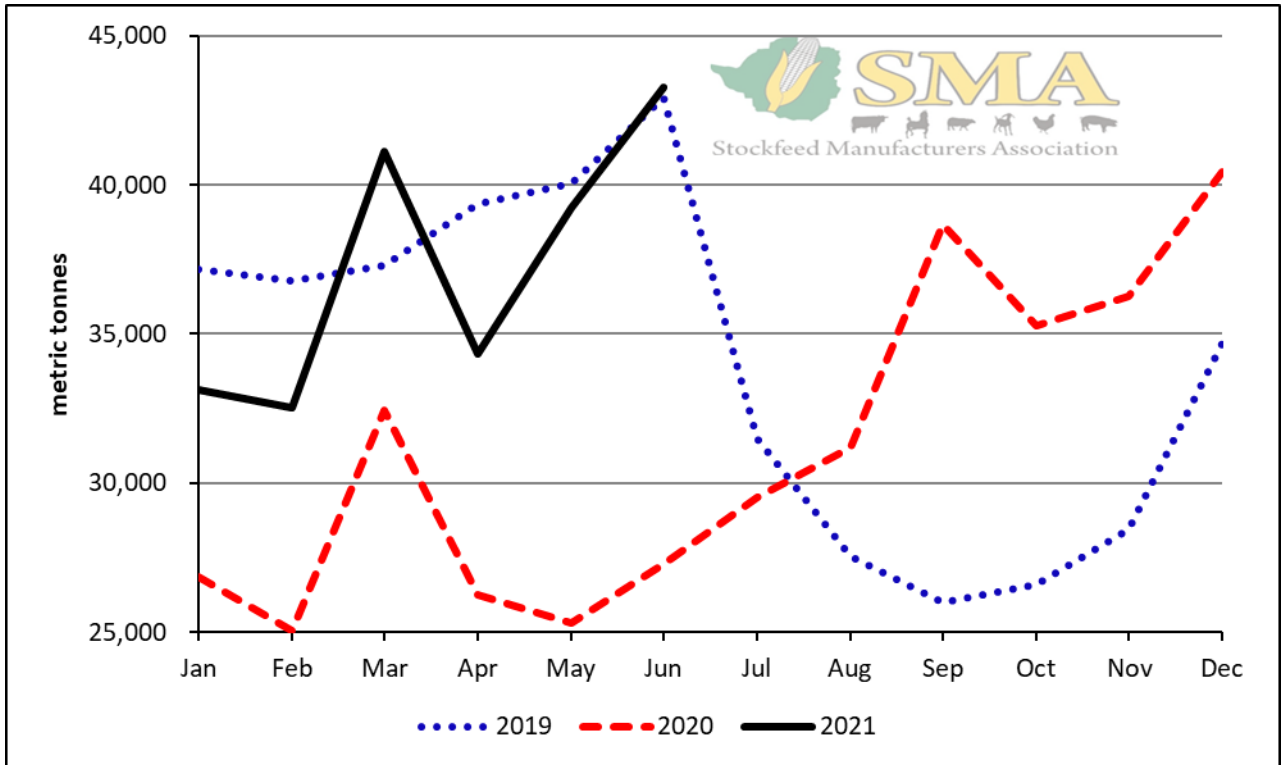
Value of Feeds Produced in USD Terms



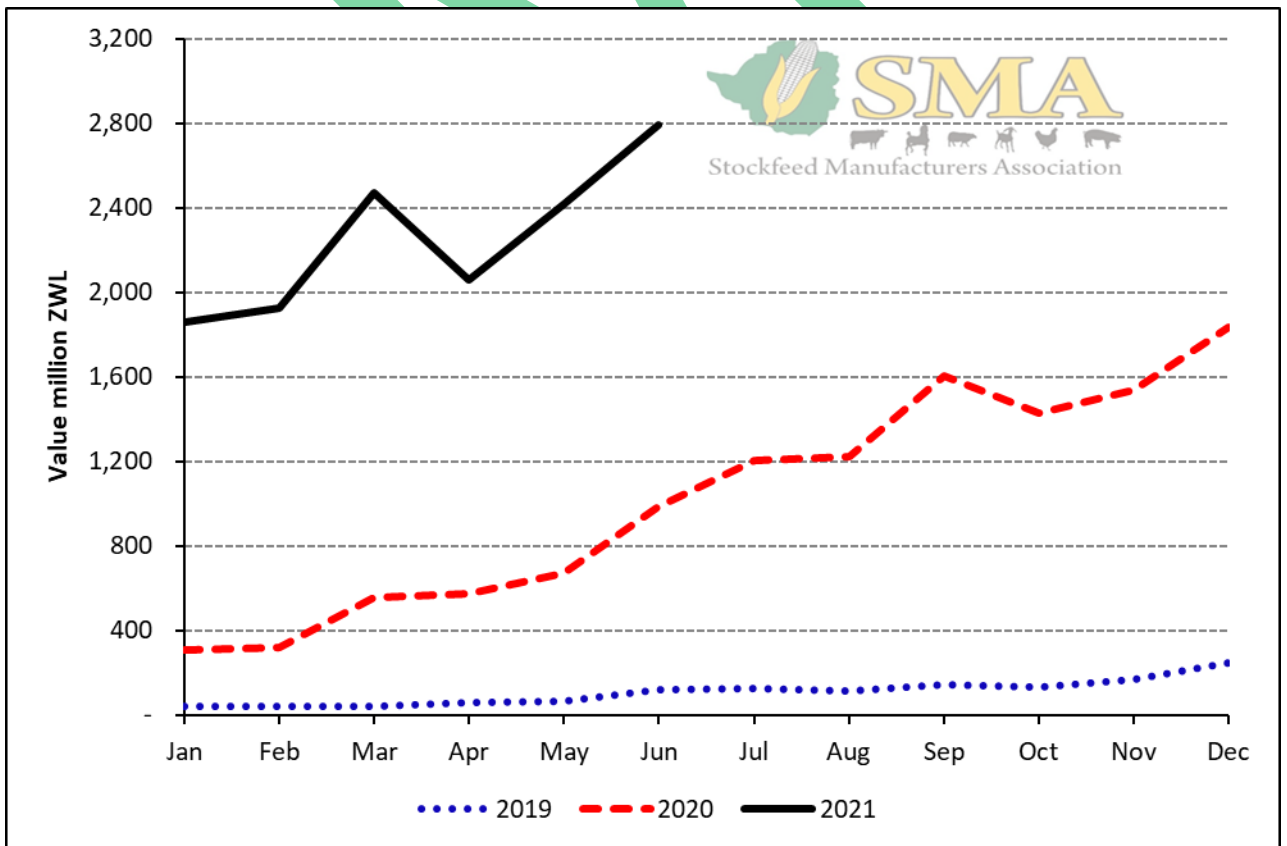
Production of Day-old chicks and Poultry Feeds



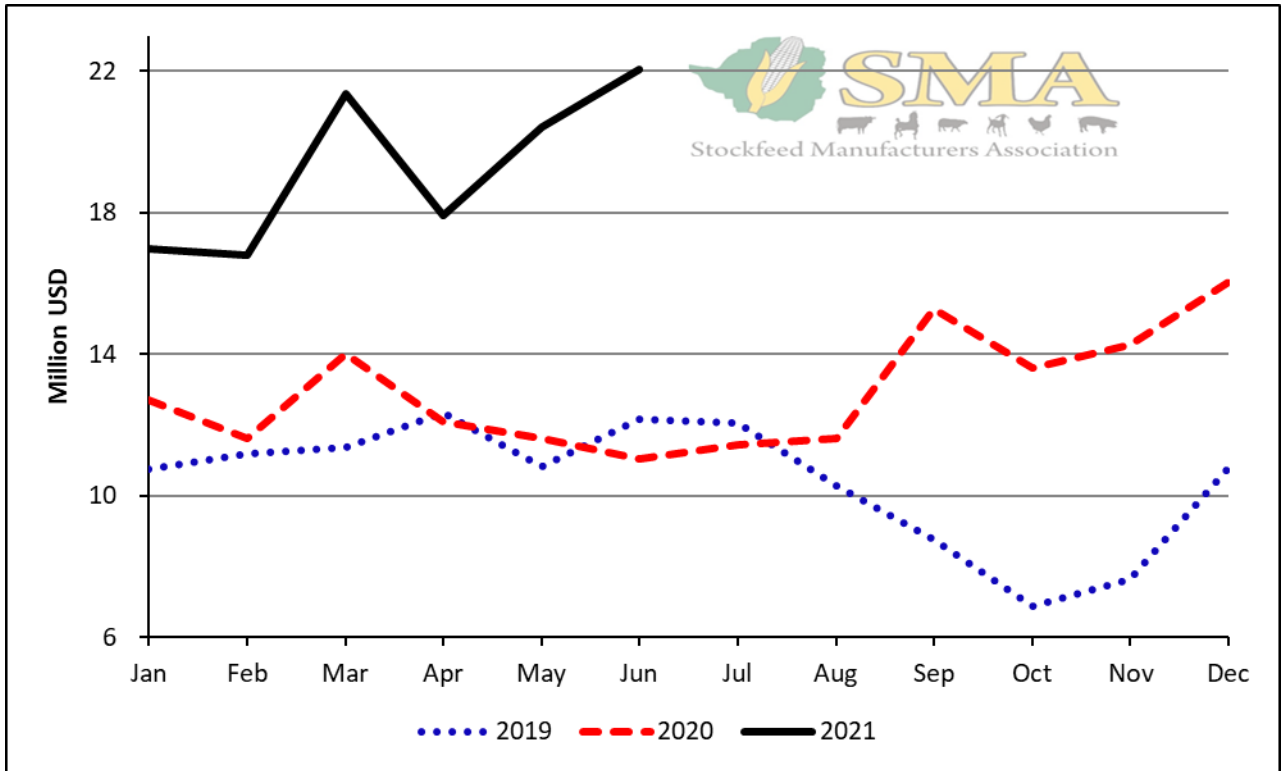
Average Monthly Production of Day-old Chicks and Poultry Feeds



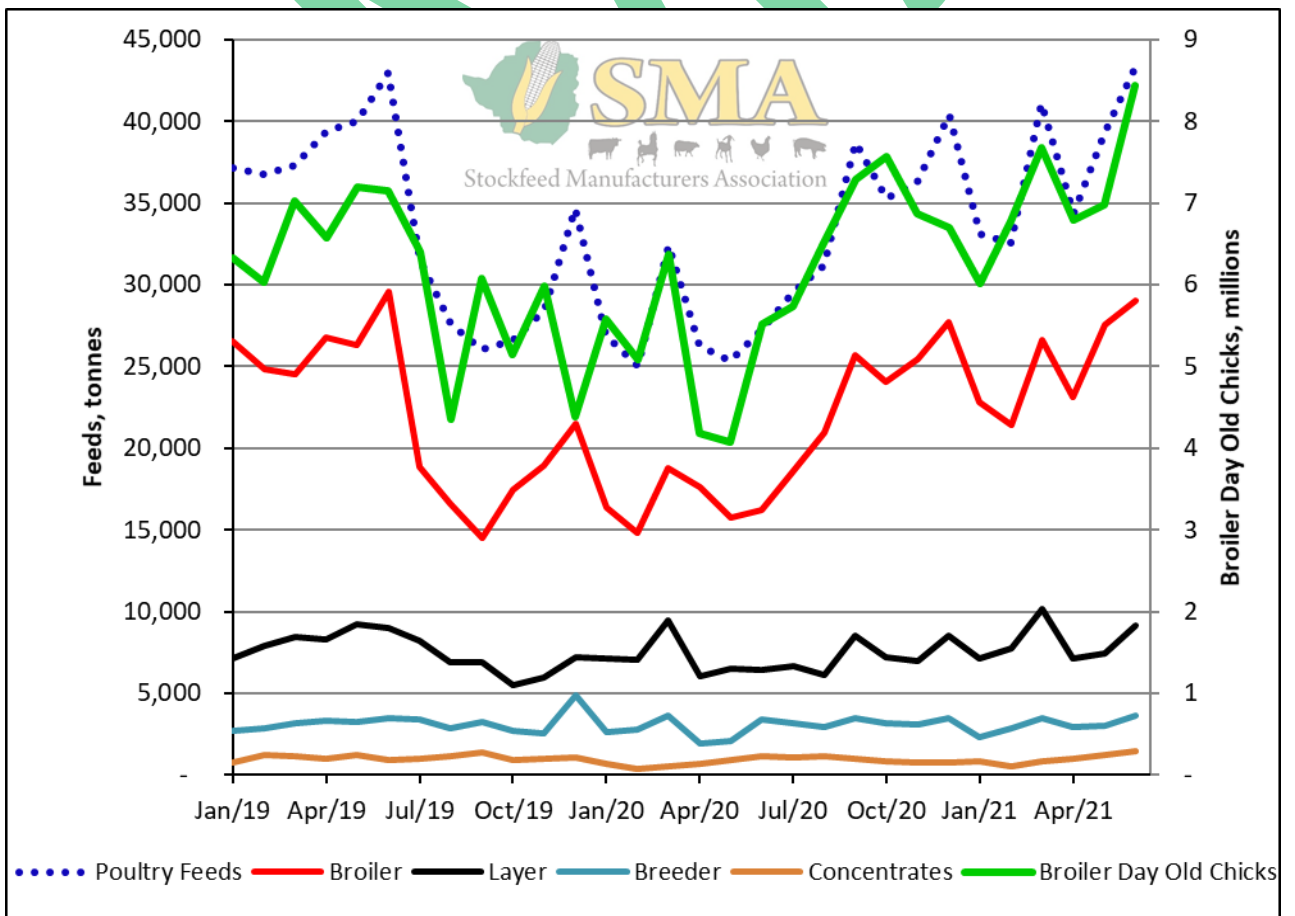
Tonnage Poultry Feeds Produced



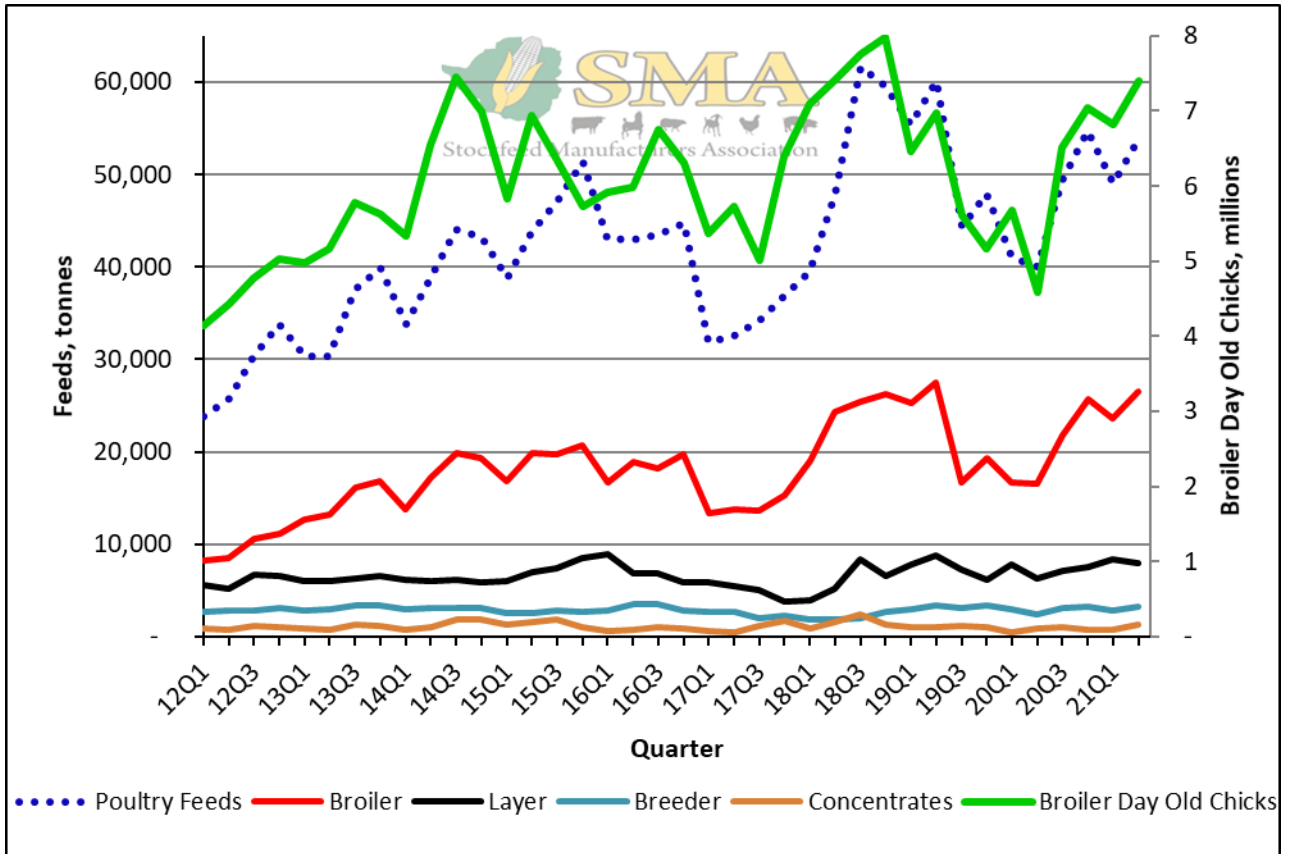
Value of Poultry Feeds Produced



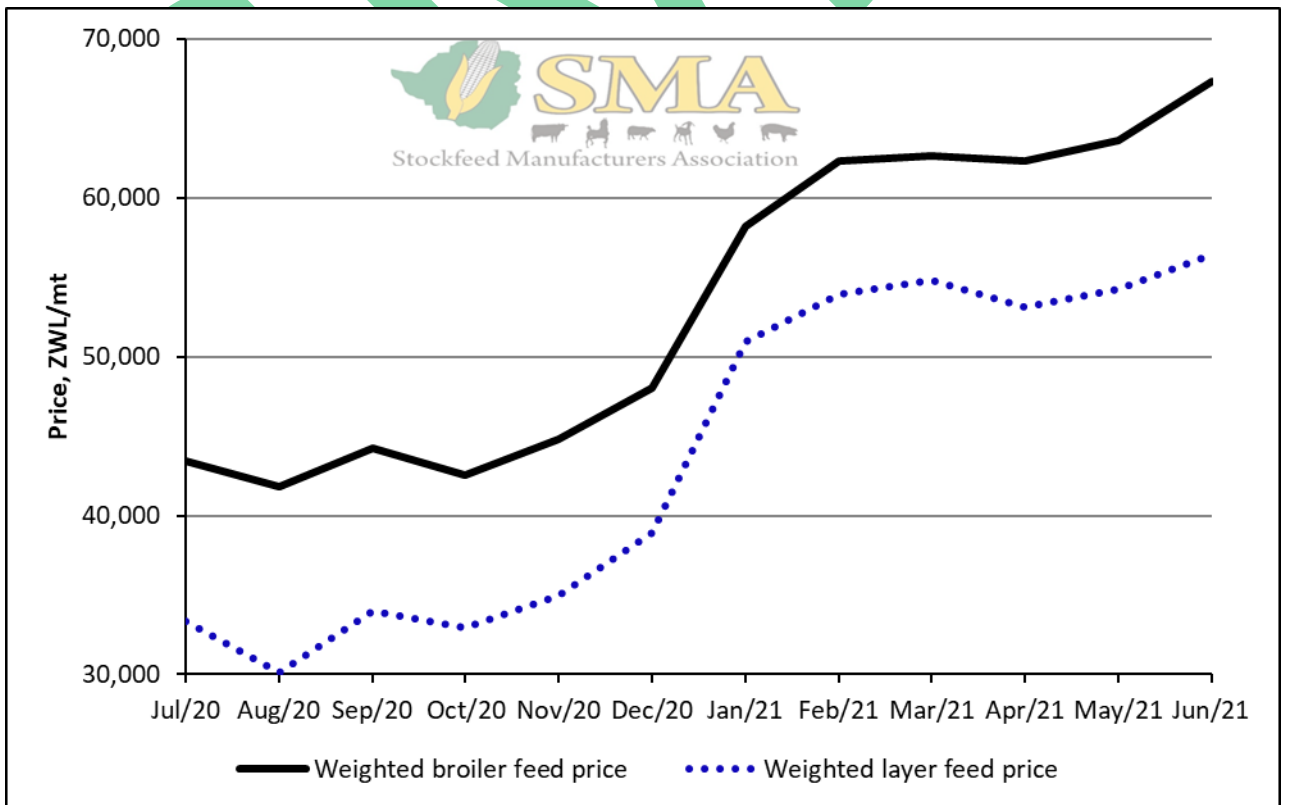
Value of Poultry Feeds Produced in USD Terms



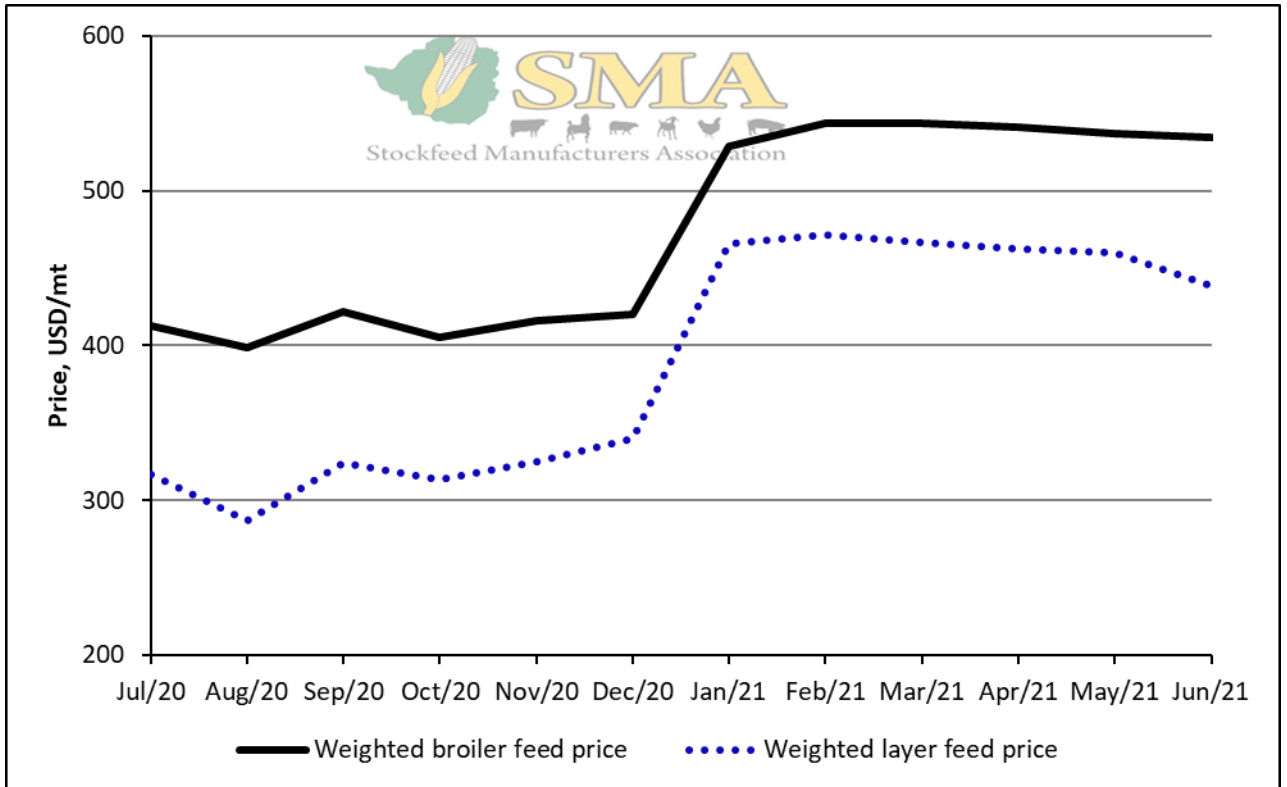
Production of Poultry Feeds and Day-Old Chicks



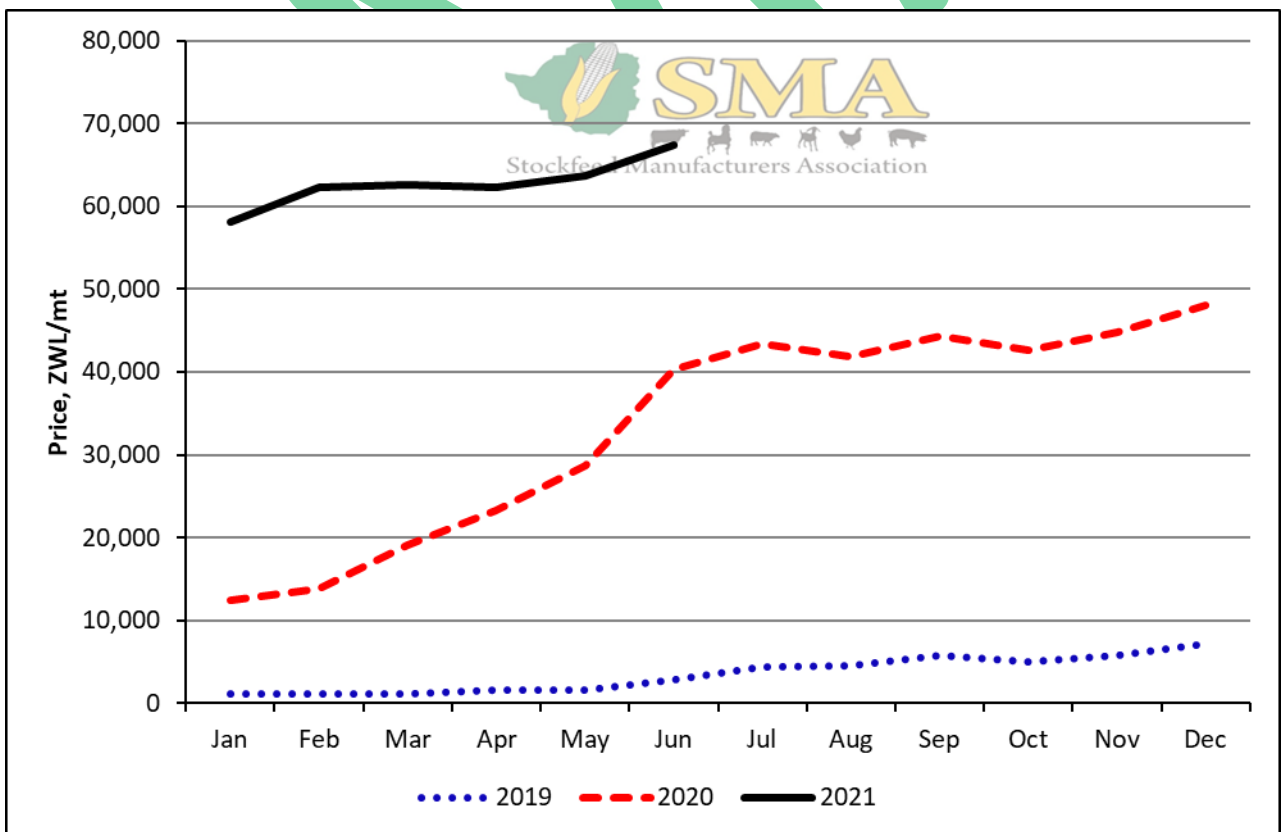
Average Monthly Production of Poultry Feeds and Day-Old Chicks



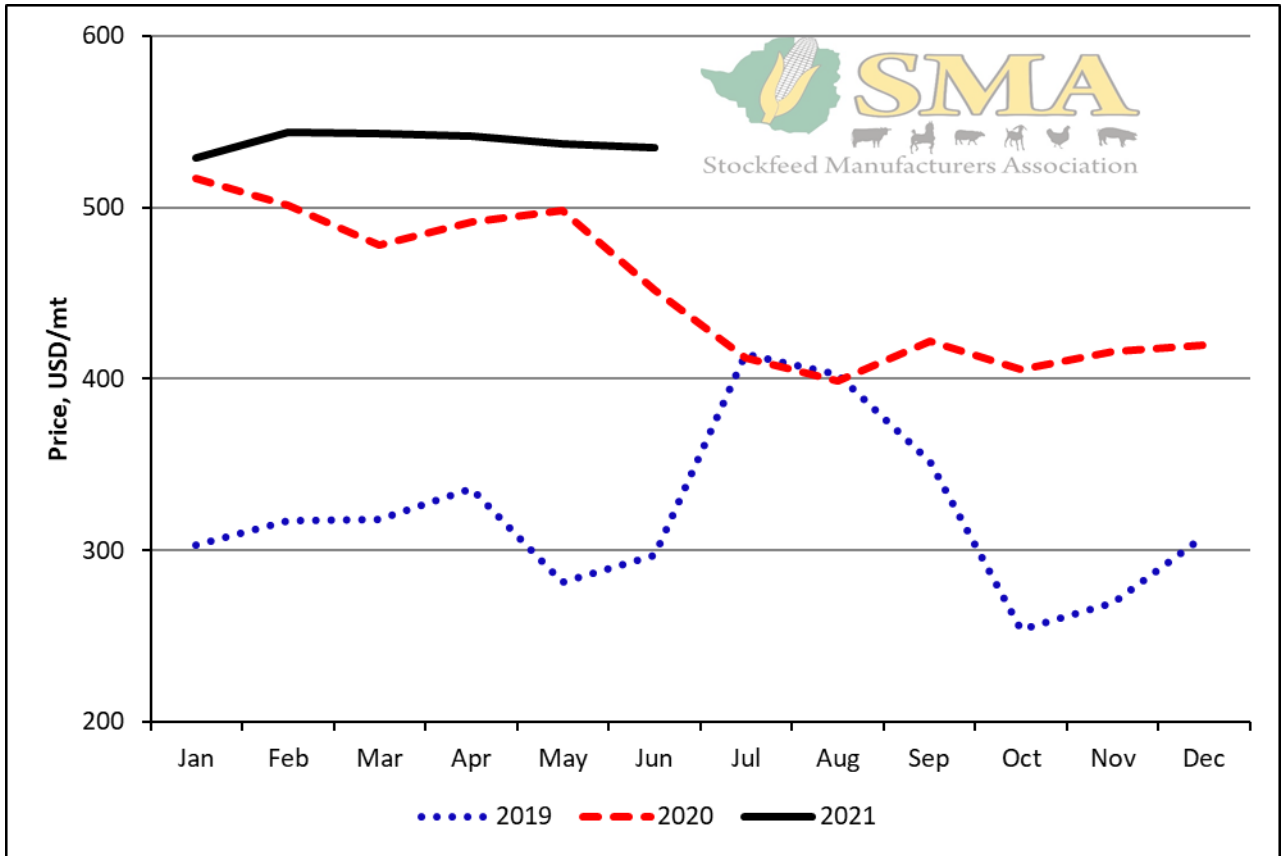
Weighted Poultry Feed Prices



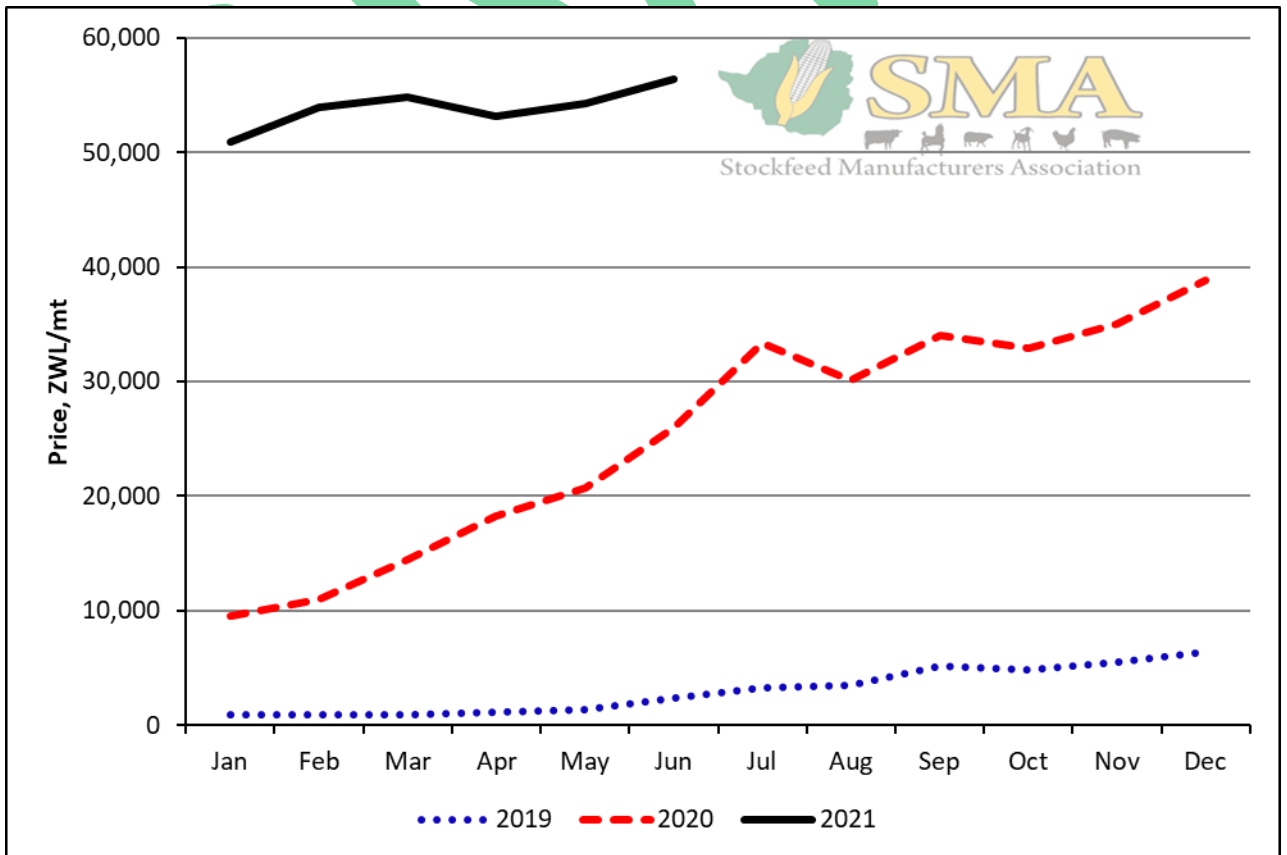
Weighted Broiler Feed Prices in USD Terms



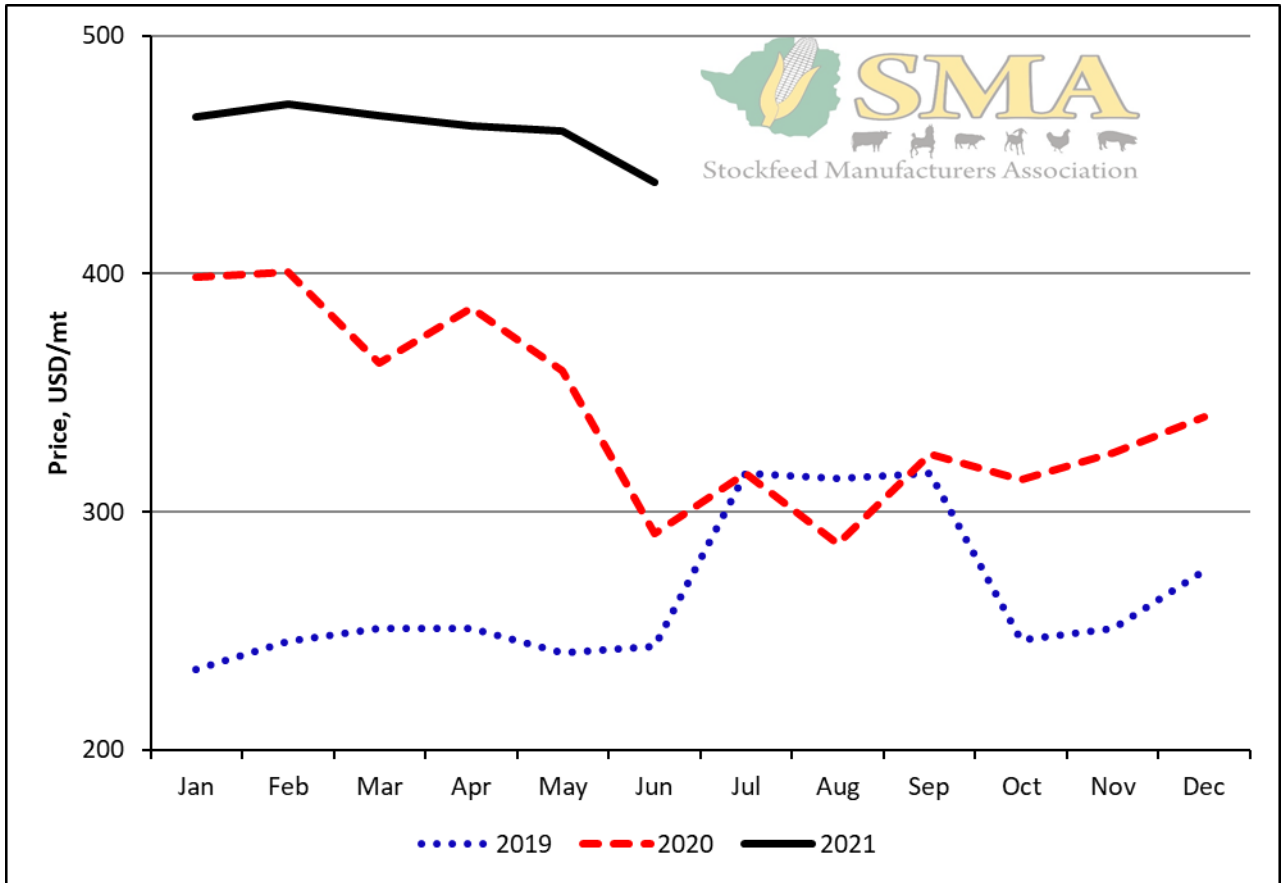
Weighted Broiler Feed Prices



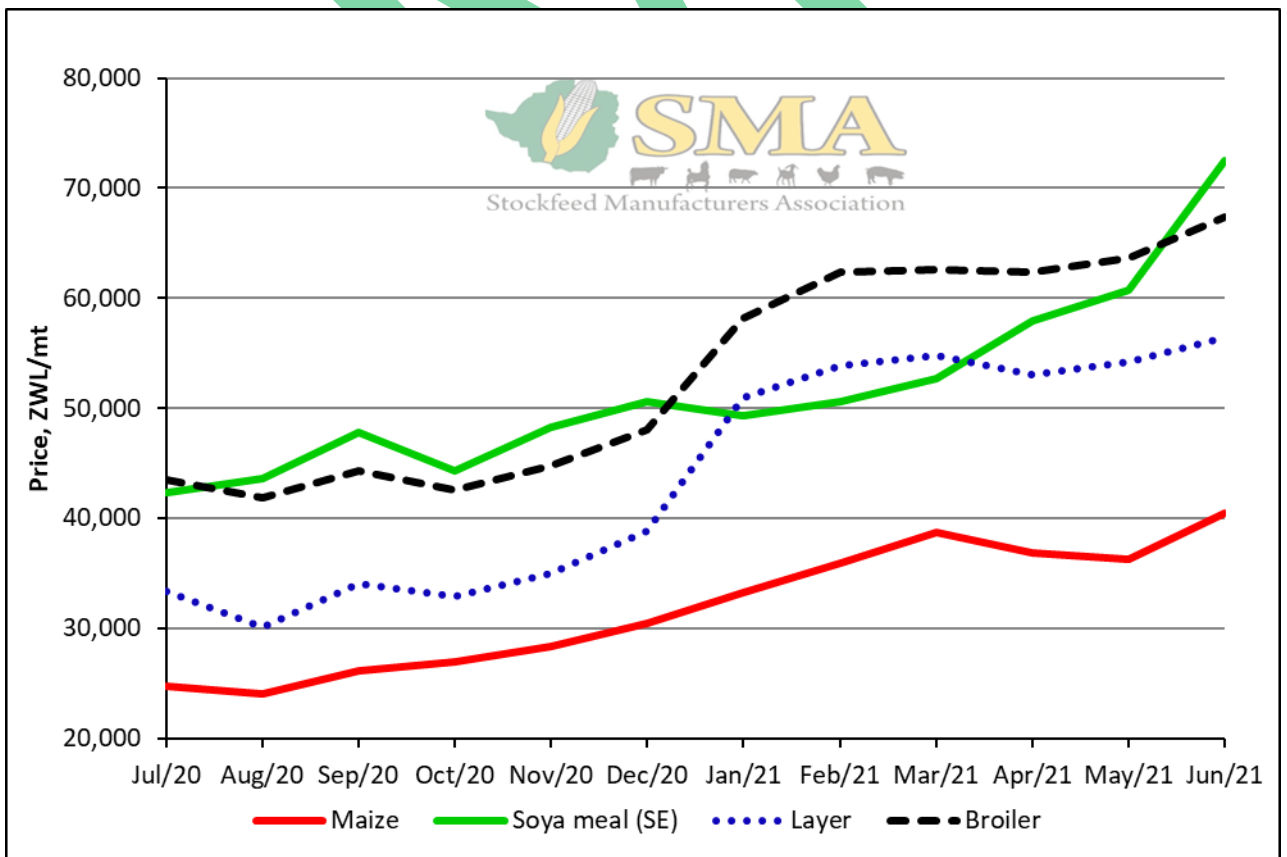
Weighted Broiler Feed Prices in USD Terms



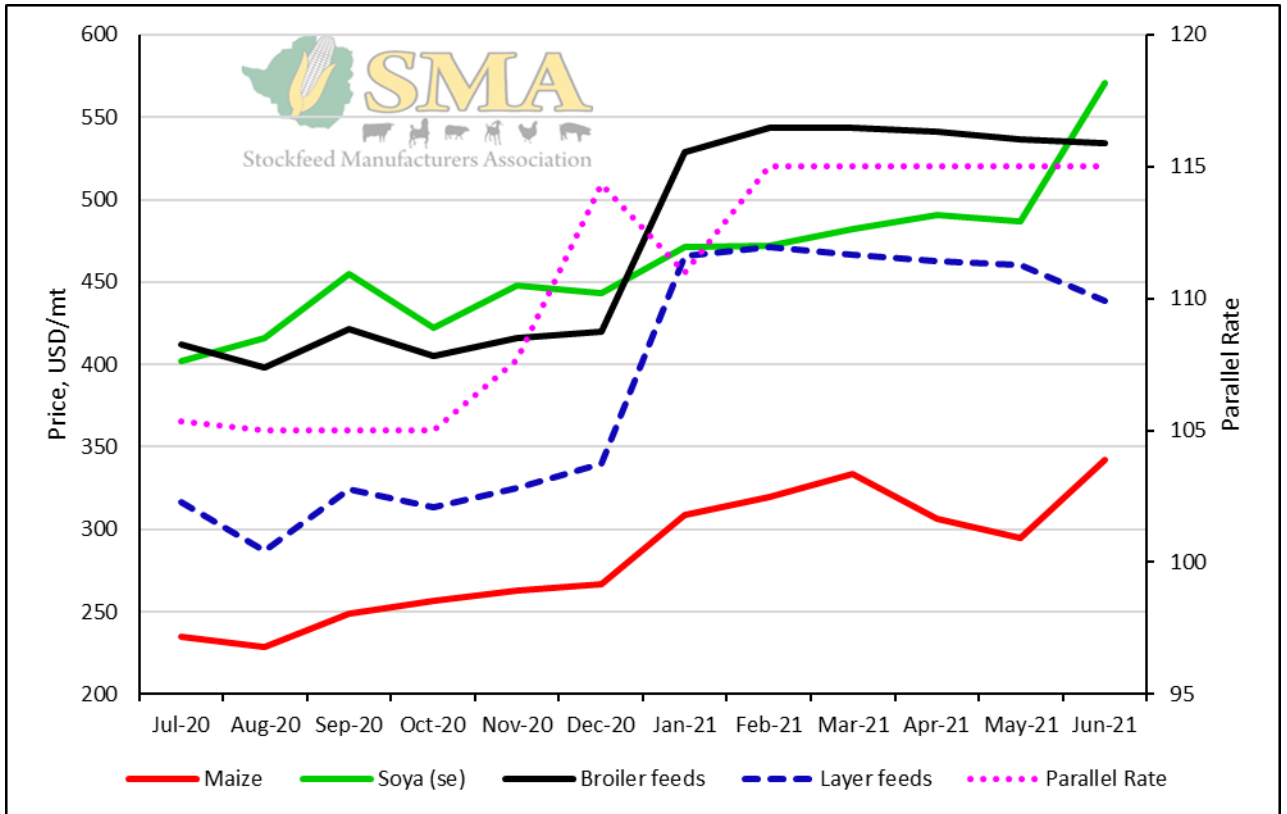
Weighted Layer Feed Prices



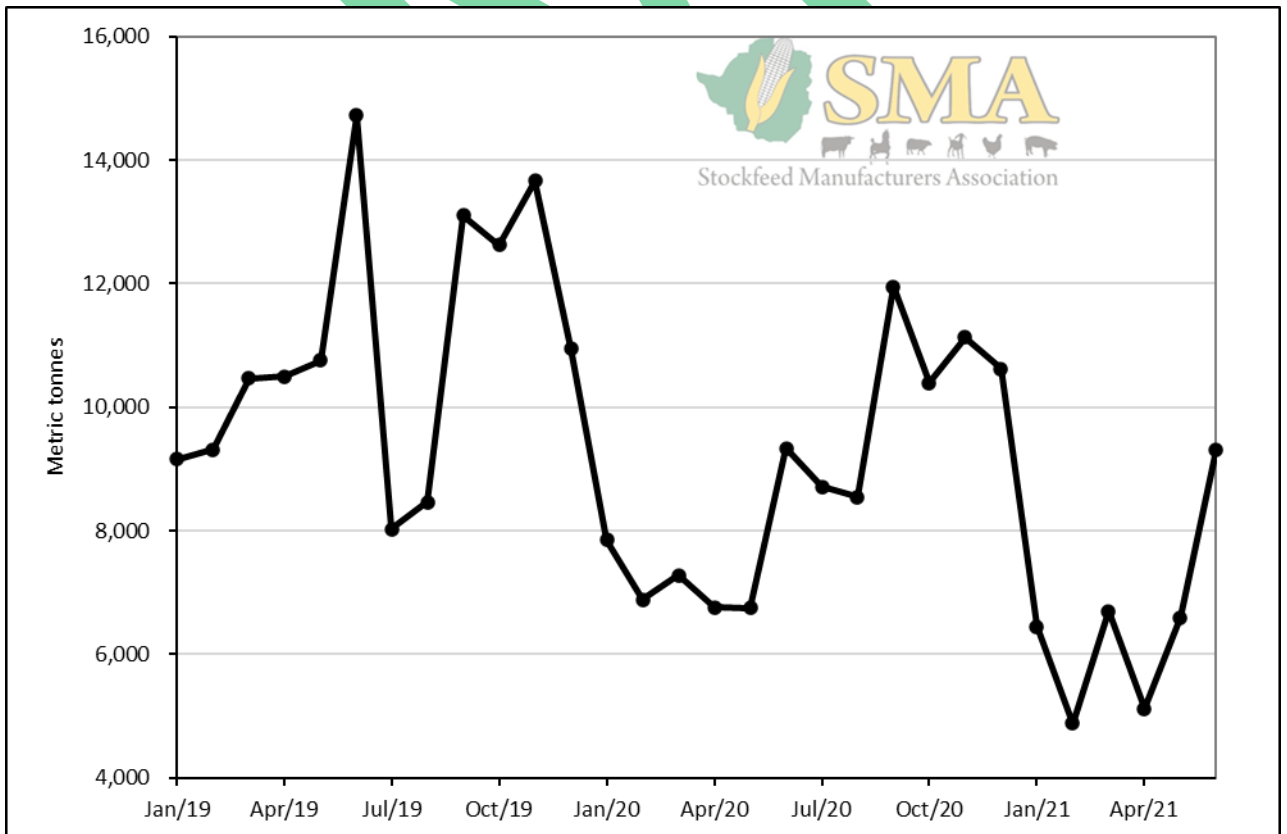
Weighted Layer Feed Prices in USD Terms



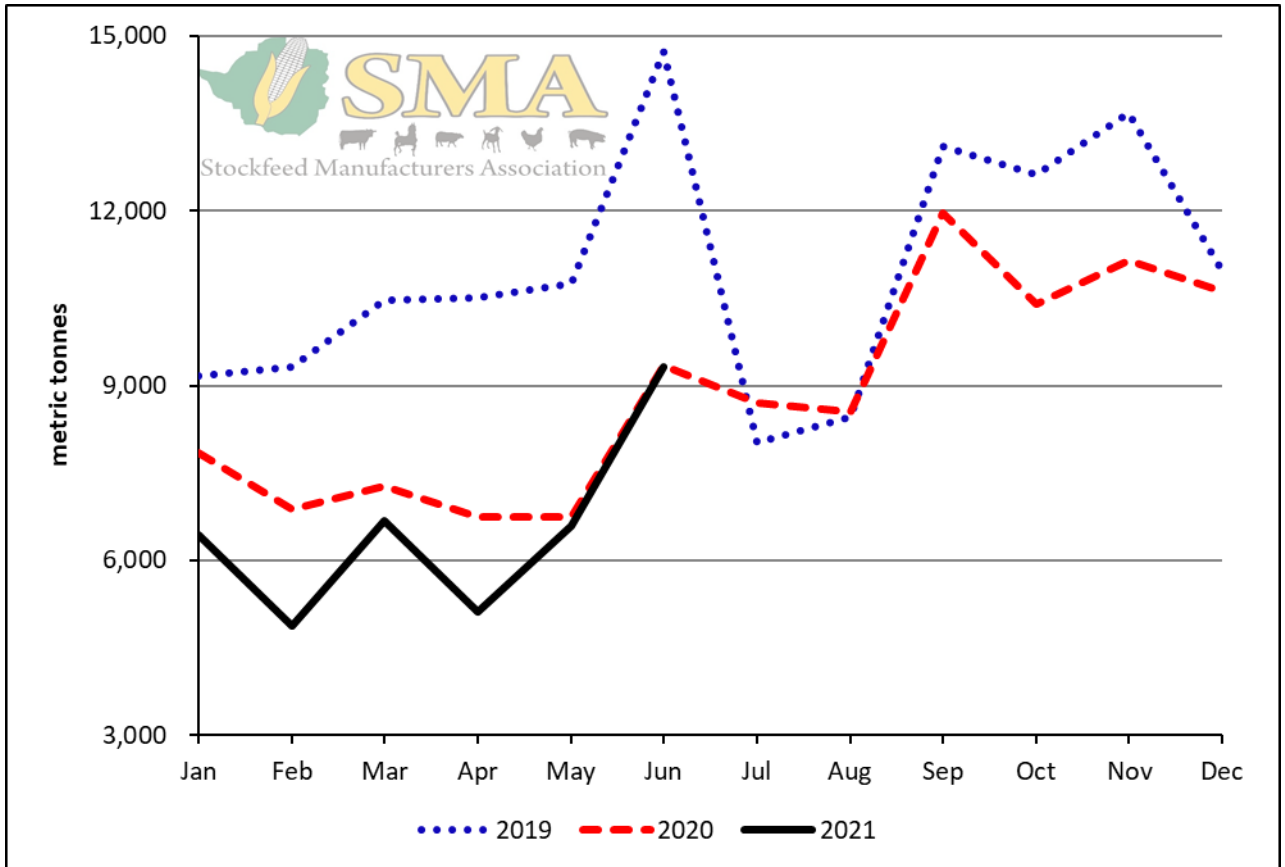
Prices of Maize, Solvent Extracted Soya and Weighted Prices of Broiler and Layer Feeds



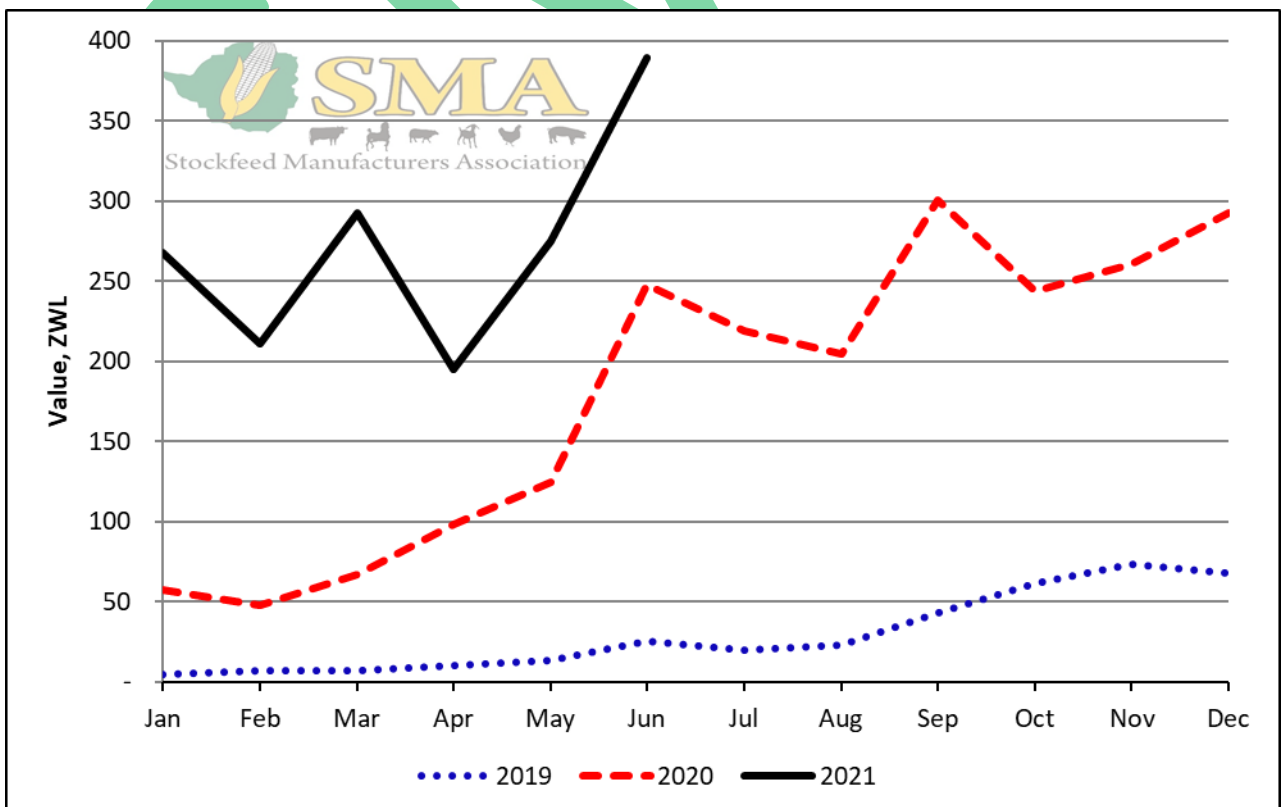
Prices of Raws Procured and Feeds Relative to the Parallel Rate



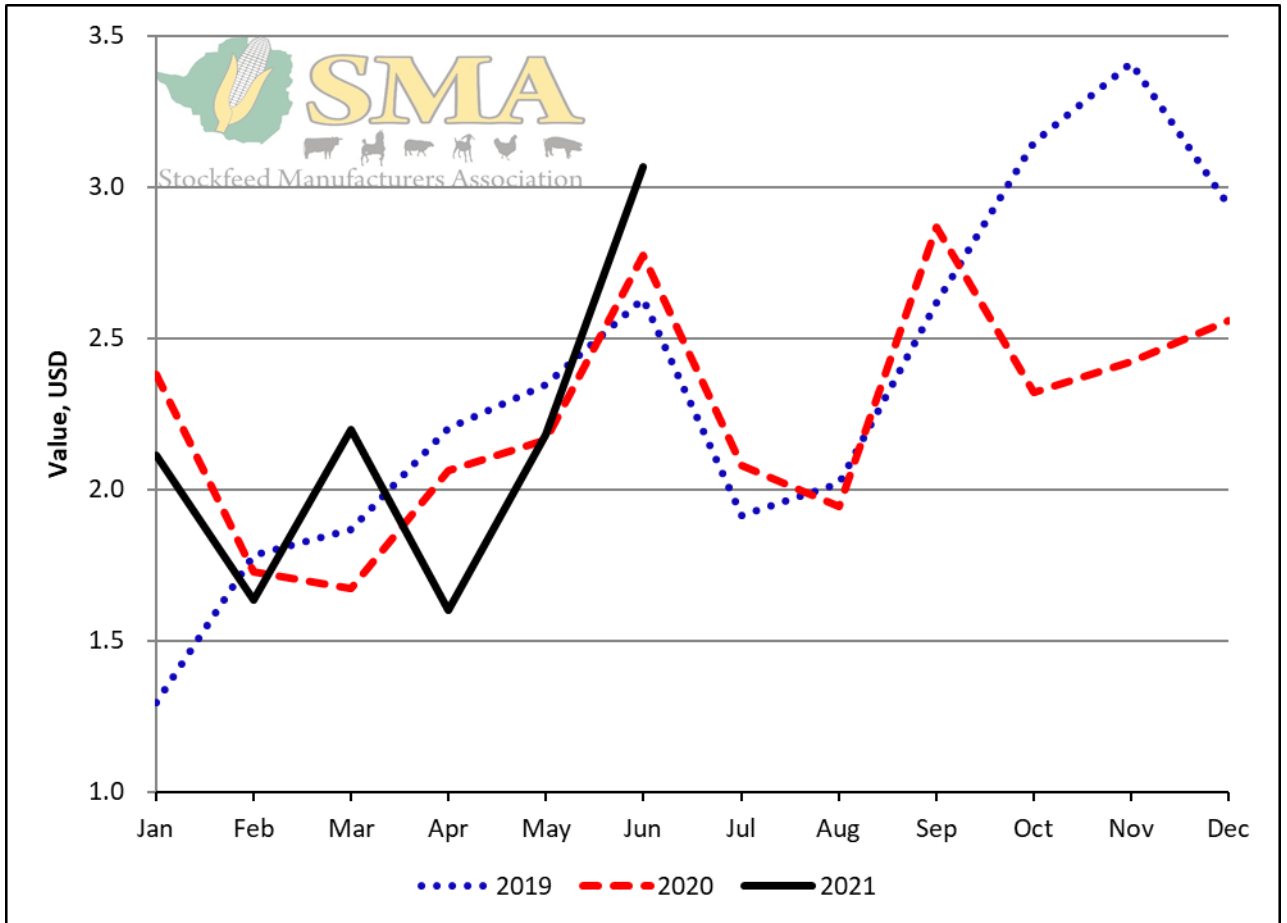
Tonnage Ruminant Feeds Produced



Tonnage Ruminant Feeds Produced



Value of Ruminant Feeds Produced



Value of Ruminant Feeds Produced in USD Terms

